



FlipFactory®

ADDING BUMPERS AND TRAILERS USING FLIPFACTORY

This App Note applies to FlipFactory versions 7.0 & later

Adding Bumpers And Trailers Using FlipFactory 2

- Introduction 2
- Adding a Bumper and a Trailer using FlipFactory 2
- Testing Your Bumper And Trailer Additions..... 4

Copyright and Trademark Notice..... 5

Limited Warranty and Disclaimers 5

Adding Bumpers And Trailers Using FlipFactory

Introduction

This app note provides an example of how to add bumpers and trailers quickly and easily using FlipFactory. To add bumpers and trailers to your media, use FlipFactory's *Media Expansion* Process/Analyze tool in your factory, which you can configure to add media to an existing time line, either at the beginning (bumper) or end (trailer) of the source media file.

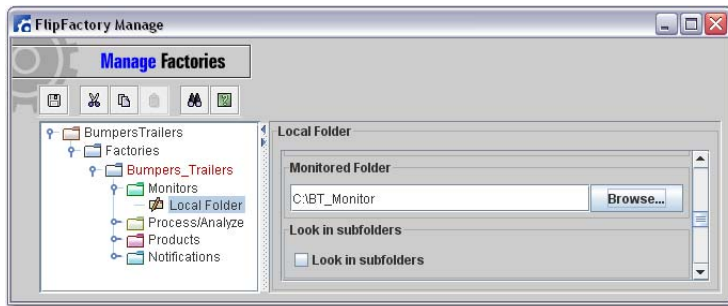
The *Bumpers and Trailers* option is a licensed feature of FlipFactory which may be purchased and downloaded by registered FlipFactory users from our Web site at www.telestream.net.

Note: This app note assumes you know how to create and configure factories in FlipFactory and how to submit jobs. Review the *FlipFactory User's Guide* for details.

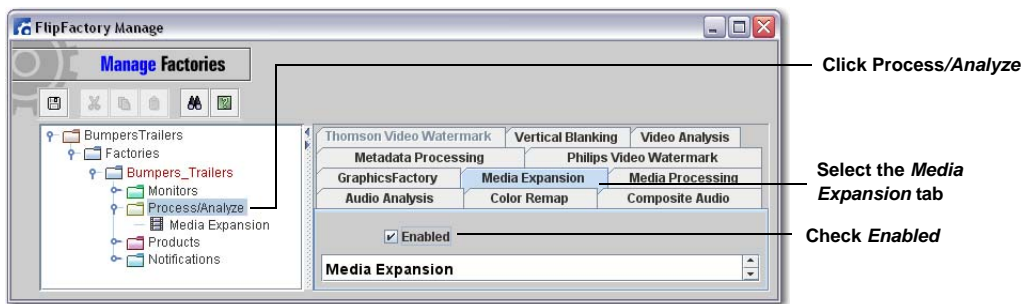
Adding a Bumper and Trailer Using FlipFactory

To create a factory that adds a bumper and trailer to a media file, follow these steps:

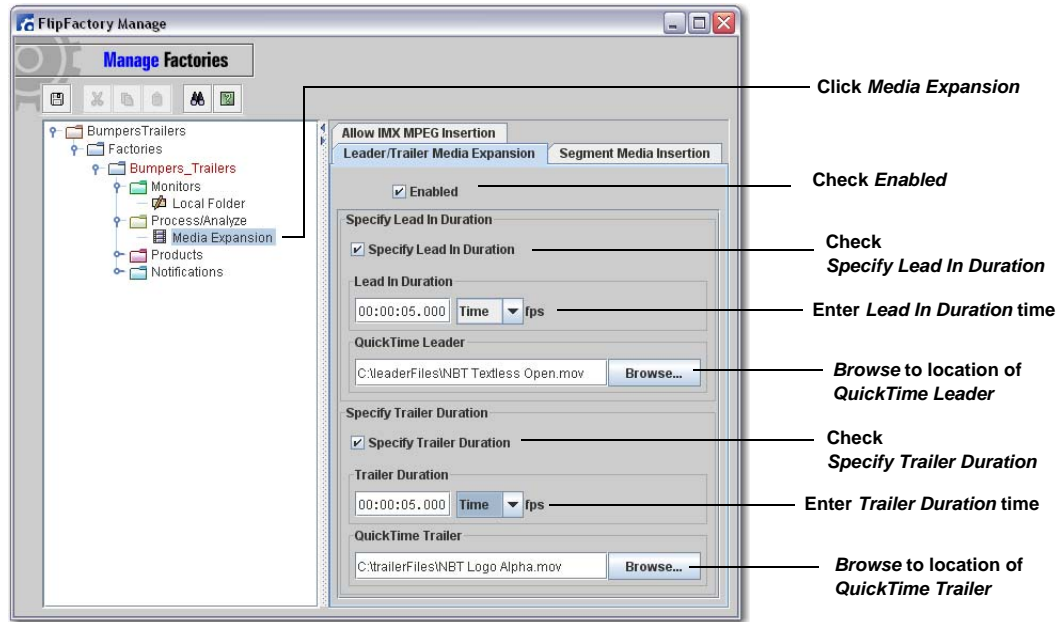
1. Create a new factory with a *Local Folder* monitor where the source media file is located:



2. Add the *Media Expansion* P/A Tool: Click *Process/Analyze*, click the *Media Expansion* tab, and check *Enabled*:

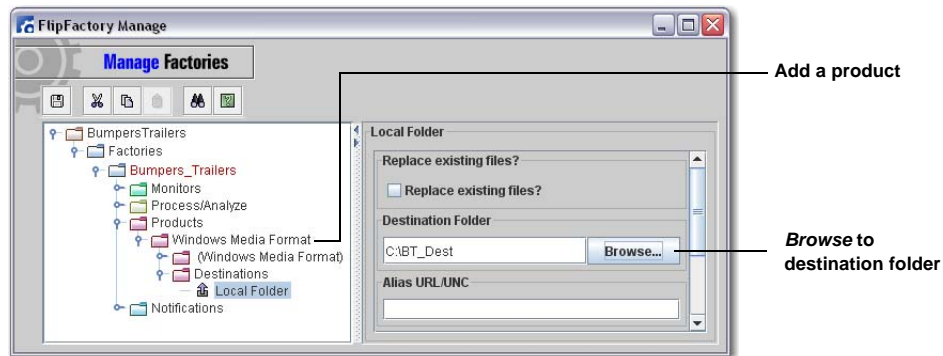


3. Click *Media Expansion*, check *Enabled*, check *Specify Lead In Duration*, enter the duration time for the bumper, and *Browse* to bumper file location. Repeat these steps for the trailer:



Note: Duration times are manually set to ensure frame accuracy. If a bumper or trailer file is not identified, black video is used in its place for the indicated duration. Bumpers and trailers must be either referenced or flattened .mov files, playable on QT Pro on the FlipFactory Server. Frame rates and interlace configuration of bumpers and trailers must match the source media file.

4. Add a product and browse to the destination where the resulting media file is saved:

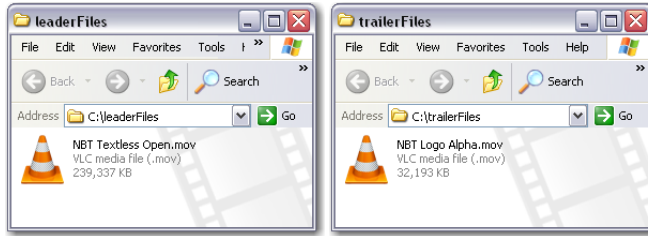


Note: In this example the product is **Windows Media Format**, but any video product can be used.

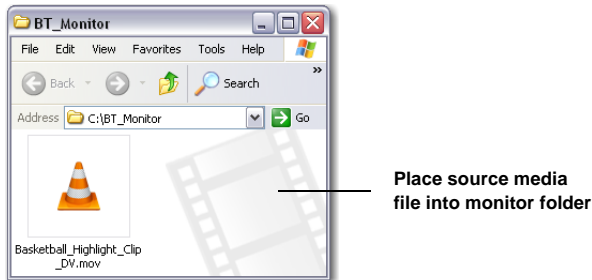
Testing Your Bumper And Trailer Additions

Now that you have created a factory to add a bumper and trailer to a media file, the produced file should be tested to ensure success:

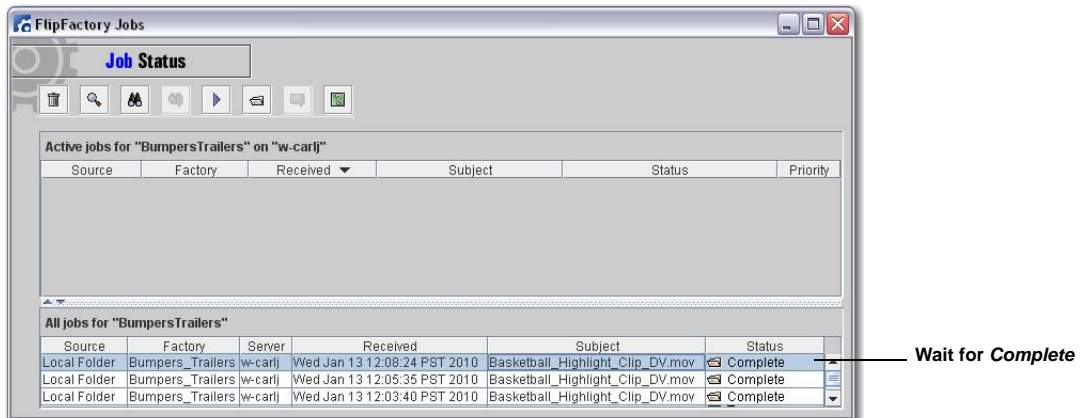
1. In FlipFactory, open the *Job Status* window to monitor factory progress.
2. Place the Bumper and Trailer files in the appropriate folders:



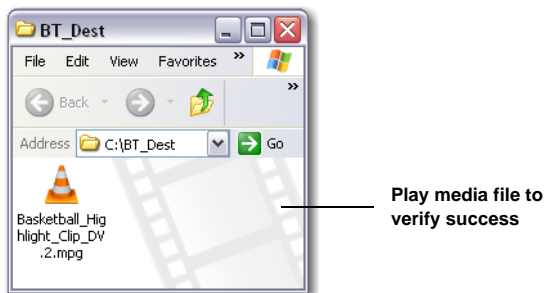
3. Place the source media file into the monitored folder:



4. Wait for the *Job Status* window to display "Complete":



5. Open the destination folder to ensure that the new media file has been created, then play the file to ensure that the bumper and trailer have been successfully added:



Copyright and Trademark Notice

©2009 Telestream, Inc. All rights reserved. No part of this publication may be reproduced, transmitted, transcribed, altered, or translated into any languages without written permission of Telestream, Inc. Information and specifications in this document are subject to change without notice and do not represent a commitment on the part of Telestream.

Telestream, Flip4Mac, FlipFactory, Episode, Telestream MAP, MetaFlip, GraphicsFactory, and MotionResolve are registered trademarks and Pipeline, Launch, Wirecast, ScreenFlow, Videocue, Drive-in and Split-and-Stitch are trademarks of Telestream, Inc. All other trademarks are the property of their respective owners.

All other brand, product, and company names are the property of their respective owners and are used only for identification purposes.

Limited Warranty and Disclaimers

Telestream, Inc. warrants to you, as the original licensee only, that the software you licensed will perform as stated below for a period of one (1) year from the date of purchase of the software by you:

The software will operate in substantial conformance with its specifications as set forth in the applicable product user's guide/published specifications/product description. Telestream does not warrant that operation of the software will be uninterrupted or error-free, will meet your requirements, or that software errors will be corrected. Telestream's sole liability under Section 1 of this Limited Warranty shall be to use reasonable commercial efforts to bring the Software's performance into substantial conformance with the specifications in the applicable product user's guide/ published specifications/product description.

FlipFactory has been designed for professionals skilled in the art of digital media transformation and workflow automation, to facilitate the automation of complex media operations and workflow that require a multitude of input and output media formats, delivery to numerous types of media devices and file systems, and notification of media systems including broadcast automation systems and media asset management systems.

The FlipFactory architecture and user interface is designed to provide maximum flexibility in the setup and configuration of these complex media transformations and workflow. In providing this high degree of flexibility, it is possible for media transformation and workflow processes to be configured that are impractical, likely to result in unexpected or unintended results, or beyond the limits of FlipFactory to perform satisfactorily. Additionally, FlipFactory may be executed on a platform that lacks the performance or capacity to perform the media transformations and workflow you've configured, which is your responsibility to specify. Telestream has chosen to implement FlipFactory to provide the greatest flexibility without limiting its functionality to only those transformations and workflow that are known with certainty to be within its performance capabilities, including those limits imposed by the platform upon which you have installed FlipFactory.

Therefore, you acknowledge that you may create transformations and workflow that are impractical or beyond your FlipFactory installation's limits, and Telestream does not warrant that each transformation or workflow you specify or use will complete without error.

Limitations of Warranties. EXCEPT AS EXPRESSLY SET FORTH IN SECTION 1 ABOVE, NO OTHER WARRANTY, EXPRESS OR IMPLIED, IS MADE WITH RESPECT TO THE SOFTWARE, INCLUDING WITHOUT LIMITATION ANY IMPLIED WARRANTY OF MERCHANTABILITY, FITNESS FOR A PARTICULAR PURPOSE, NON-INFRINGEMENT OF THIRD PARTY RIGHTS AND THOSE ARISING FROM A COURSE OF DEALING OR USAGE OF TRADE. NO WARRANTY IS MADE THAT USE OF THE SOFTWARE WILL BE ERROR FREE OR UNINTERRUPTED, THAT ANY ERRORS OR DEFECTS IN THE LICENSED MATERIALS WILL BE CORRECTED, OR THAT THE SOFTWARE'S FUNCTIONALITY WILL MEET YOUR REQUIREMENTS.