

DIVA Core

SPM (Storage Plan Manager) User's Guide

Release 8.1

Version 1.0

August 2021

Copyrights and Trademark Notices

Specifications subject to change without notice. Copyright © 2021 Telestream, LLC and its Affiliates. Telestream, CaptionMaker, Cerify, DIVA, Episode, Flip4Mac, FlipFactory, Flip Player, Gameshow, GraphicsFactory, Kumulate, Lightspeed, MetaFlip, Post Producer, Prism, ScreenFlow, Split-and-Stitch, Switch, Tempo, TrafficManager, Vantage, VOD Producer, and Wirecast are registered trademarks and Aurora, ContentAgent, Cricket, e-Captioning, Inspector, iQ, iVMS, iVMS ASM, MacCaption, Pipeline, Sentry, Surveyor, Vantage Cloud Port, CaptureVU, Cerify, FlexVU, PRISM, Sentry, Stay Genlock, Aurora, and Vidchecker are trademarks of Telestream, LLC and its Affiliates. All other trademarks are the property of their respective owners.

This software and related documentation are provided under a license agreement containing restrictions on use and disclosure and are protected by intellectual property laws. Except as expressly permitted in your license agreement or allowed by law, you may not use, copy, reproduce, translate, broadcast, modify, license, transmit, distribute, exhibit, perform, publish, or display any part, in any form, or by any means. Reverse engineering, disassembly, or decompilation of this software, unless required by law for interoperability, is prohibited.

Intel and Intel Xeon are trademarks or registered trademarks of Intel Corporation. All SPARC trademarks are used under license and are trademarks or registered trademarks of SPARC International, Inc. AMD, Opteron, the AMD logo, and the AMD Opteron logo are trademarks or registered trademarks of Advanced Micro Devices. UNIX is a registered trademark of The Open Group.

Contents

Preface	vii
Audience	vii
Documentation Accessibility.....	vii
Related Documents.....	vii
Document Updates	vii
Conventions	viii
1 Overview	
DIVA Core Storage Plan Manager Overview	1-2
New and Enhanced SPM Features and Functionality	1-2
DIVA Core Object Lifecycle	1-4
Managing the Object Lifecycle	1-4
SPM Slot Types	1-5
Actions, Action Steps, and Action States	1-5
Managing DIVA Core Watermarks and Arrays	1-7
Recommended Best Practices for Watermarking.....	1-8
Storage Plan Manager Workflows	1-10
Storage Plan Manager Tasks.....	1-10
Simple Object Lifecycle Example	1-11
Retrying SPM Failed Actions and Issue Resolution	1-11
Action Slot Workflow	1-13
Storage Slot Workflow	1-13
Recommended Best Practices	1-14
SPM Configuration	1-14
Typical SPM Workflow	1-14
Non-Watermarked (Fixed Retention) Mode	1-14
Watermarked Mode	1-14
Choosing Appropriate Watermarks.....	1-14
General Watermarking Rules	1-15
Setting Up Tape Groups in DIVA Core.....	1-15
Valid Reasons for Creating Multiple Tape Groups.....	1-16
Invalid Reasons for Creating Multiple Tape Groups	1-17
Simple SPM Configuration Example	1-17
Additional SPM Configuration Examples	1-18

2 Installation and Configuration

Installation Prerequisites	2-2
SPM Configuration File Parameters	2-2
Request Type Distribution	2-8
Storage Plan Definition	2-9
DIVA Command Storage Plans Tab	2-9
Recommended Best Practices	2-9
Creating the Storage Plan	2-10
Creating Mediums	2-10
Creating Filters.....	2-12
Alternate Methods of Assigning Storage Plans to an Object.....	2-13
Creating Slots	2-14
Configuring Storage Slots.....	2-14
Configuring Nearline Storage Slots.....	2-18
Configuring Transcode Archived Slots	2-20
Configuring Metadata Archive Slots	2-25
Configuring Restore Slots	2-29
SPM Delete Object Behavior	2-33
ALLOW_OBJECT_DELETION Parameter	2-33
DELETE_OBJECT_ONLY_LAST_INSTANCE Parameter	2-34
Changing a Storage Plan	2-34
Disabling and Deleting Slots	2-35
Adding a Slot.....	2-36
Watermark Based Disk Cleaning Management	2-36
External Storage Plans	2-37
Configuration Validation	2-37

3 Operations

Managing the SPM Service through the Command Line	3-1
Accessing SPM Information through the Control GUI	3-2
Filtering the SPM Actions Panel View.....	3-2
Assigning a New Storage Plan.....	3-3
Rescheduling Failed Actions	3-3
Marking Failed Actions Complete.....	3-3
Storage Plan Manager Action Result Codes	3-4
Storage Plan Manager Logging	3-6

4 Frequently Asked Questions

What should be done if no SPM actions are being generated?	4-1
What should be done if only Storage actions are being generated?	4-2
What should be done if SPM actions are generated but are never executed (they stay in the Scheduled state)?	4-2
What should be done if SPM actions always Fail Long?	4-3
Why are SPM actions removed from the SPM Actions List?	4-3
Why does the <i>Start At</i> time not update when an SPM action is rescheduled?	4-3
Why are copies being recreated on the disk after a Delete Instance?	4-3

What are the different components of SPM?	4-3
It appears that sometimes not all components start as part of SPM. What, if anything, controls whether a given component starts, and how do I tell if the DSM Controller is started since it is now integrated with SPM?	4-3
SPM appears to communicate only with the Oracle Database and the Manager (through DIVA Core API calls). Does SPM interact with any other processes?	4-3
Is SPM event driven, or does it purely repeat some looped processing of slots and rules or database query results?	4-4
Is SPM stateful across restarts?	4-4
An archived object can only belong to a single Storage Plan. When an object is first archived, DIVA Core Manager appears to archive to the default media for the corresponding Storage Plan, or the next-best media if the default media is not available for some reason. Is this correct?	4-4
What are the meanings of the DATARCHIVED, DATELASTUPDATE, and DATENEXTUPDATE properties for objects under SPM?	4-4
A newly archived object appears to have its DATELASTUPDATE and DATENEXTUPDATE fields set to the same value as DATEARCHIVED automatically by DIVA Core independent of SPM. Is this correct?	4-4

A Default Configuration Files and Parameters

SPM Configuration Parameters	5-1
Storage Plan Definitions	5-1
Mediums Definitions.....	5-2
Object Slot Definitions	5-2
Filter Definitions	5-3
SPM Actions Definitions.....	5-4
Object Filters.....	5-4
Transformation Rules	5-4
Request Templates	5-5
SPM Default Configuration File (<i>spm.conf.ini</i>)	5-5
SPM Trace Configuration File (<i>spm.trace.ini</i>)	5-11

Glossary

Preface

This document describes the installation, configuration, and operations of the DIVA Core Storage Plan Manager for this DIVA Core release.

Audience

This document is intended for Installation, Administration and Operations personnel to follow all of the necessary steps to achieve full functionality of the SPM (Storage Plan Manager) component.

Documentation Accessibility

For information about Telestream's commitment to accessibility, visit the Telestream Support Portal located at <https://www.telestream.net/telestream-support/diva/support.htm>.

Access to Telestream Support

Telestream customers that have purchased support have access to electronic support through the Telestream Support Portal located at <https://www.telestream.net/telestream-support/diva/support.htm>.

Related Documents

For more information, see the Telestream DIVA Core documentation set for this release located at <https://www.telestream.net/telestream-support/diva/support.htm>.

Document Updates

The following table identifies updates made to this document.

Date	Update
June 2020	Minor formatting updates.
February 2021	Rebranded document to Telestream Updated copyright notices

Date	Update
July 2021	<p>Updated SPM configuration information to use DIVA Command instead of Configuration Utility</p> <p>Updated information for DIVA Core 8.1 release including renaming various components as follows:</p> <ul style="list-style-type: none"> • <i>Actor</i> is now named Datahub • <i>Proxy Actor</i> is now named Proxyhub • <i>Production System</i> is now named Network • <i>Source/Destination</i> is now named Server

Conventions

The following text conventions are used in this document:

Convention	Meaning
boldface	Boldface type indicates graphical user interface elements associated with an action, or terms defined in text or the glossary.
<i>italic</i>	Italic type indicates book titles, emphasis, or placeholder variables for which you supply particular values.
monospace	Monospace type indicates commands within a paragraph, URLs, code in examples, text that appears on the screen, or text that you enter.
blue text	Blue text indicates a link to an outside source, or to another chapter, section, or glossary term in this book.

Caution: Misconfiguration of SPM may lead to unexpected and disastrous results! Minor edits to slots can lead to catastrophic consequences including the deletion of hundreds of thousands of instances on tape (*for example, an incorrect value in a slot's end time*), or database corruption (*for example, creating a Storage slot while the SPM is running, and changing it to Restore type slot while copy and delete instance actions have already begun processing*). Without special training and familiarity with the product, you should always contact Telestream Support before making any changes to SPM. Failure to do so may result in severe damage to the DIVA Core system or even permanent data loss.

This chapter describes an overview of the SPM (*Storage Plan Manager*), and includes the following information:

- [DIVA Core Storage Plan Manager Overview](#)
- [New and Enhanced SPM Features and Functionality](#)
- [DIVA Core Object Lifecycle](#)
- [Managing the Object Lifecycle](#)
- [SPM Slot Types](#)
 - [Actions, Action Steps, and Action States](#)
- [Managing DIVA Core Watermarks and Arrays](#)
 - [Recommended Best Practices for Watermarking](#)
- [Storage Plan Manager Workflows](#)
 - [Storage Plan Manager Tasks](#)
 - [Simple Object Lifecycle Example](#)
 - [Retrying SPM Failed Actions and Issue Resolution](#)
 - [Action Slot Workflow](#)
 - [Storage Slot Workflow](#)
- [Recommended Best Practices](#)
 - [SPM Configuration](#)
 - [Setting Up Tape Groups in DIVA Core](#)
 - [Valid Reasons for Creating Multiple Tape Groups](#)
 - [Invalid Reasons for Creating Multiple Tape Groups](#)

- [Simple SPM Configuration Example](#)
- [Additional SPM Configuration Examples](#)

DIVA Core Storage Plan Manager Overview

The SPM (*DIVA Core Storage Plan Manager*) software component provides object lifecycle management (*interacting with the DIVA Core Manager*), and is typically installed on the same computer as the DIVA Core Manager. For example, an archived object can reside on a specific medium the first day, and migrate (*over time*) to a different medium according to your established policies and rules. DIVA Core executes the object lifecycle migration as a background activity by following the rules and policies defined in the corresponding Storage Plan.

New and Enhanced SPM Features and Functionality

SPM configuration is now possible in DIVA Command. It supports the same functionality as the Configuration Utility with the following difference:

SPM, SPM filters, and SPM slots are now grouped into a single structured view shown in tabs. When you add a new SPM rule, you can add an SPM filter and slot for this SPM directly under this tab. You no longer need to select which SPM a filter or slot belongs to. In the Configuration Utility, filter and slots are displayed in their own independent tables. The user must select which SPM a filter or slot belongs to.

The screenshot displays the 'Storage Plans' configuration page in the DIVA interface. The left sidebar contains navigation links for various system components. The main area is divided into several sections: a form for creating or editing a storage plan, filter and slot management sections, and a table of existing media configurations.

Name	Media	Watermark	Cleaning Strategy	Actions
m_default	default	N	By last access time	
m_divagrid	divagrid	N	By last access time	
m_divagrid_legacy	divagrid_legacy	N	By last access time	
m_legacy	legacy	N	By last access time	

You can change the status of SPM *Failed Actions* to **COMPLETED** by right clicking the action, and then selecting **Mark Action COMPLETED** from the context menu. See [Marking Failed Actions Complete](#) for detailed information.

The SPM service is ported to 64-bit in Windows. The OracleDivaDB_3-0-0_12_1_0_2_0_SE2_Windows_64-bit.zip and later releases no longer include the 32-bit Oracle database client. DIVA Core 7.7 and later in a Windows environment only supports DIVAOracle database package OracleDivaDB_3-0-0_12_1_0_2_0_SE2_Windows_64-bit.zip and later. *No previous database package will work with DIVA Core 7.7 and later.*

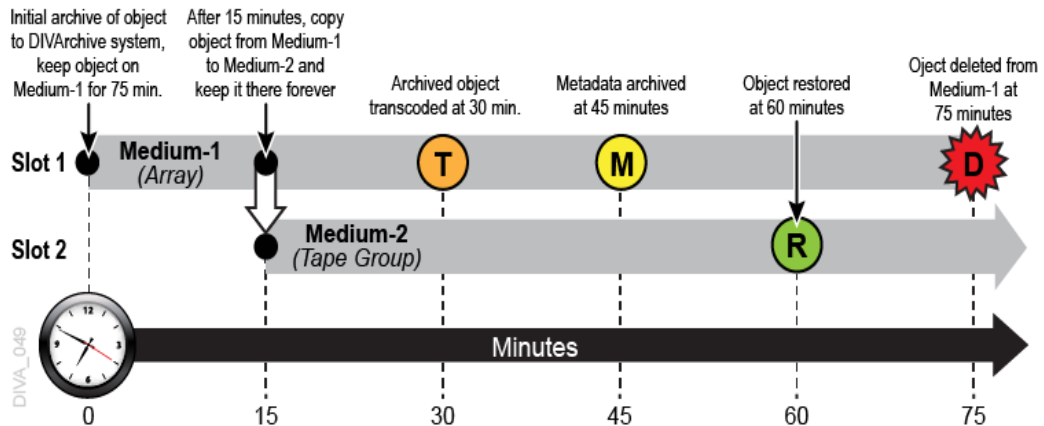
See the DIVA Core Installation and Configuration Guide for more information on running DIVA Core in a Linux environment, and DIVA Core new and enhanced features and functionality.

DIVA Core Object Lifecycle

This section describes the steps and processes encompassing the DIVA Core object lifecycle. Along with the standard DIVA Core terminology, Storage Plan Manager has additional terms that require identification. Understanding these additional terms will assist in comprehending the DIVA Core SPM module, the processes involved, and the DIVA Core Object Lifecycle.

See the [Glossary](#) for SPM specific terminology.

There are several steps included in the object lifecycle, depicted in the following example figure. You can use SPM to automate this generic object lifecycle.



Managing the Object Lifecycle

DIVA Core can define a storage policy for each object, or group of objects, which enables describing the complete lifecycle of an object, and managing the content migration throughout the lifecycle. Using the Storage Plan Manager, content lifecycle management becomes a background process that is performed automatically.

You use a [Storage Plan](#) to specify the different migrations, and copies of the specified objects, from one media to another according to your defined storage rules and policies.

The SPM component in DIVA Core manages the Storage Plan. The Storage Plan is a way to select the best trade off between cost and performance of the different storage media technologies as a function of the age and access frequency of the object. The Storage Plan feature enables the customization of content lifecycle management.

You can specify rules and policies that include parameters such as:

- The amount of time an object is to be retained on a medium. This interval is called a [Slot](#).
- Where to copy an object when its time has expired on the medium (*for example, copy from array to tape after two weeks*).

For example, you can schedule tasks that consume relatively large amounts of system resources during low use periods (*for example, between midnight and five am*). These tasks are executed within the interval specified in the corresponding slot configuration.

- Time of day (*local time*) when the action is executed.
- When and where to restore an object.
- When to transcode an object, and where to store the transcoded content.

SPM Slot Types

SPM has a logical workflow as follows:

- A **Medium** is a combination of defined medium (*disk arrays or tape groups*) available to SPM.
- Each **Storage Plan** is associated with one, or more, mediums and contains one, or more, slots.
- Each defined **Filter** is associated with a Storage Plan.
- Each slot defines one, or more, **Actions** to be performed.

To create a slot, navigate to the **DIVA Configuration, Storage Plans, Slots** tab in DIVA Command and click the + button on the top of the tab.

To edit an existing slot, navigate to the **Slots** tab in DIVA Command, and then click the Edit icon (*looks like a pencil*) for the slot you want to edit in the *Slots* panel.

The following is a list of **Slot Types** and *Actions*.

Storage Slot

A Storage Slot enables copying of an object, and then deleting the object (*if the slot is configured for deletion*). Object deletion refers to either a DeleteInstance or DeleteObject process, depending on the SPM configuration, and whether other instances still exist. You can only create and configure Storage Slots on DIVA Command **Storage Plans** tab.

See [Simple SPM Configuration Example](#) for information on Storage Slot workflows, and [Configuring Storage Slots](#) for information on configuring Storage Slots.

Transcode Archive Slot

A Transcode Archived Slot enables transcoding of an archived object. You create and configure this type of slot using both the DIVA Command **Storage Plans** tab.

See [Action Slot Workflow](#) for information on Action Slot workflows, and [Configuring Transcode Archived Slots](#) for information on configuring Transcode Archived Slots.

Metadata Archive Slot

A Metadata Archive Slot enables archiving of the object metadata. You create and configure this type of slot using both the DIVA Command **Storage Plans** tab.

See [Action Slot Workflow](#) for information on Action Slot workflows, and [Configuring Metadata Archive Slots](#) for information on configuring Metadata Archive Slots.

Restore Slot

A Restore Slot enables restoring of an object. You create and configure this type of slot using both the DIVA Command **Storage Plans** tab.

See [Action Slot Workflow](#) for information on Action Slot workflows, and [Configuring Restore Slots](#) for information on configuring Restore Slots.

Actions, Action Steps, and Action States

A single Storage Plan can contain a single slot, or multiple slots. Each slot has one or two actions associated with it.

Every action has one **Step**, or two Steps associated with it as follows:

- Copy, Transcode Archived, Metadata Archive, and Restore
These slots have a single Step associated with them.
- Delete (*only valid for Storage Slots*)

The Delete Action has two Steps associated with it as follows:

- **POSTPONED**

Before SPM executes any Delete Actions, it checks whether the medium is watermarked. If the medium is marked Yes for Watermarking, and the level has not reached the High Watermark, SPM will not execute the Delete Action immediately. Instead, SPM marks the object for deletion, and set the object state to **POSTPONED**.

If the medium is not watermarked, there will only be one step (Delete), and the object will be deleted immediately upon expiration.

- Delete

When the medium is marked Yes for Watermarking, and the watermarked medium level reaches the High Watermark, then the object will actually be deleted.

All slot details are managed from a single screen, and all Slot Types only require configuration from the DIVA Command **Slots** tab.

When an object is added to DIVA Core, SPM checks for object compliance with the filters specified in the system. When an object conforms to one of the configured filters, the filter determines which configured Storage Plan to use for processing of the object. An object can be assigned to only one Storage Plan. If the object conforms to multiple filters, the first filter the object conforms to is the one that is considered.

The slots associated with the identified Storage Plan determine the actions performed on the object. If an object did not conform to any configured filters, the object is assigned to the **SP_DEFAULT** Storage Plan. The **SP_DEFAULT** is the default Storage Plan and must have no slots associated with it.

Action States indicate the status of the action. Each action performed on an object goes through different states as shown in the following example. Each state will finish processing before the status is updated to the next state.

Example:

1. An object matches the filter for a specific Storage Plan.
2. The Storage Plan's slot schedules the associated actions for execution on the object; the status is now **SCHEDULED**.
3. The action is then loaded into the Action Queue; the status is now **LOADED**.
4. The action is now executed; the status is now **PROCESSING**.
5. Upon successful execution of the action the status is updated to **COMPLETED**.

The additional possible action status states are **POSTPONED**, **FAILED LONG**, and **REJECTED**. The following table describes these additional statuses. See [Storage Plan Manager Workflows for additional Slot Workflow information](#).

The following are the different SPM Action States:

SCHEDULED

This state is the initial state of an action. The action is scheduled, and will be loaded into the Action Queue for execution.

LOADED

The action is loaded into the Action Queue.

PROCESSING

The action is being executed. The action is loaded into the Action Queue, and SPM has started processing this action for execution.

POSTPONED

When a Delete Action is encountered on a watermarked array, SPM will mark the object for deletion, and set the state to **POSTPONED**. SPM will not actually delete the object until the High Watermark level is reached, and then the object will be removed from the array. If the medium is not watermarked, the object will be deleted immediately. *This state only applies to Deleted Actions.*

COMPLETED

The action has completed processing successfully.

FAILED LONG

The action failed, and will be retried according to the SPM Configuration. See the UPDATE_ACTIONS_RETRY_FAILED_DELAY parameter in [SPM Configuration File Parameters](#).

Rejected

SPM sets an action to the **Rejected** state when it has reached the maximum number of retries and has failed. Rejected actions are never retried again.

SPM also sets Copy Actions of a storage slot to the **Rejected** state if the destination medium already has instances whose quantity is greater than the instances value configured in the Storage Slot.

Managing DIVA Core Watermarks and Arrays

You can manage deletions on disk mediums using watermarks. When watermarks are not used, deletions occur immediately after the slot expires. When watermarks are used, deletions are postponed until the disk array's occupied space hits a configured watermark.

The **DSM (Disk Space Monitor)** is a function of SPM, and monitors SPM identified arrays, not individual disks. The DSM process only starts if there is a SPM array that is configured for watermarking.

See [SPM Configuration File Parameters](#) and [SPM Default Configuration File \(spm.conf.ini\)](#) for configuration information.

When an object is set for deletion by a Storage Slot, it is not actually deleted until the watermarked array reaches the High Watermark. After the array reaches the High Watermark, objects marked for deletion will be deleted either by *Last Access Time*, or *Largest Object Size*. The method selected depends on how the watermark is configured. Objects are then deleted until the Low Watermark is reached.

Objects on watermarked arrays are deleted using one of the two following methods:

Last Access Time

This method deletes the oldest objects, among the objects marked for deletion (in non-Mixed Mode), first according to the last time the object was accessed.

Largest Object Size

This method deletes the largest objects, among the objects marked for deletion (in non-Mixed Mode), first according to the object size.

DSM has 2 methods for checking the Array watermark levels:

- Through the DIVA Core API
 - This method is typically used. Requests are sent to the Manager and the watermark levels are sent back to DSM.
- Directly from the array
 - This method uses the Operating System's commands to retrieve the information.

SPM arrays have three possible Watermark settings that are configurable in DIVA Command:

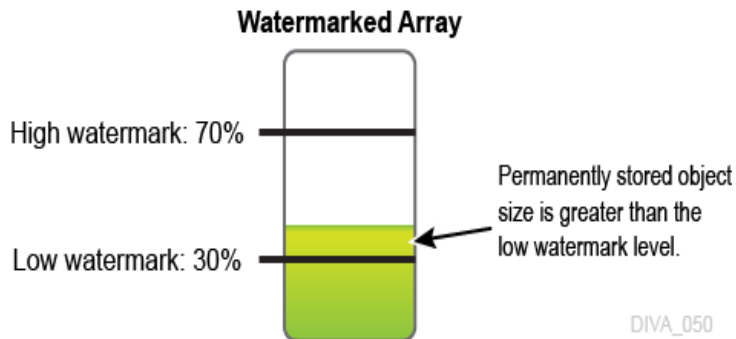
- **Yes**
This setting watermarks the identified array, and only considers objects already marked for deletion.
- **No**
This setting does not watermark the identified array.
- **Mixed**
This setting incorporates a combination of watermarked and not watermarked. This setting is only valid for Storage Slots. The action taken depends on which of the following events occurs first:
 - The slot reaches its end time.
 - The High Watermark is reached. This considers both objects marked for deletion, and objects whose slots are still open.

Note: You must restart SPM if you change the watermark state of an array.

Recommended Best Practices for Watermarking

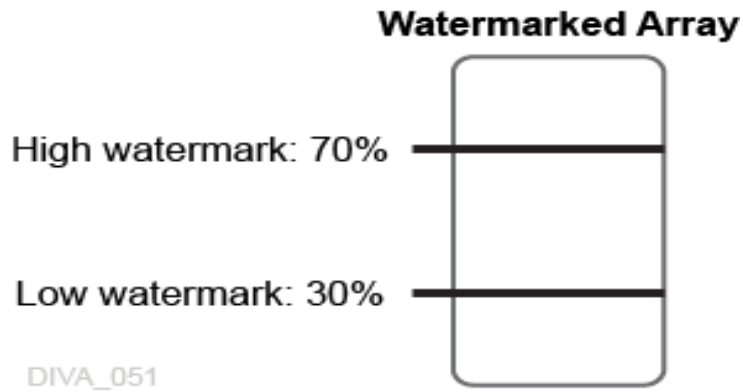
If the total size of all permanently stored objects (*that is, objects with no specified expiration time*) on an array is greater than the configured Low Watermark, Telestream recommends reconfiguring the Low Watermark setting to a value higher than the amount of permanently stored objects.

The following figure represents this basic concept:

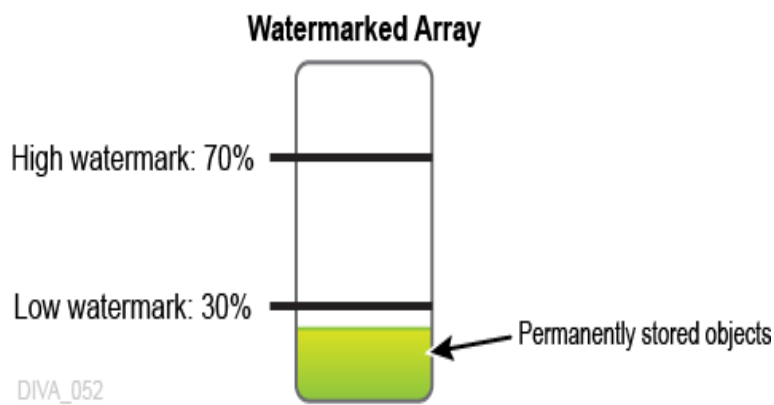


The following figures characterize a typical Watermarked Medium (*watermarking set to Yes*) and illustrate how watermarking ensures the medium does not reach full capacity.

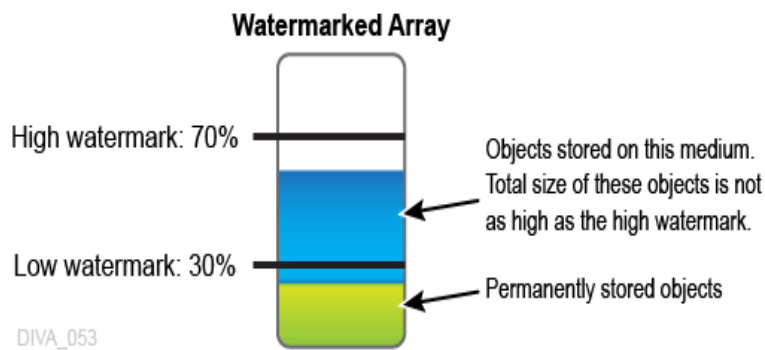
The following figure represents a watermarked disk array with no objects, and shows the Low Watermark and High Watermark:



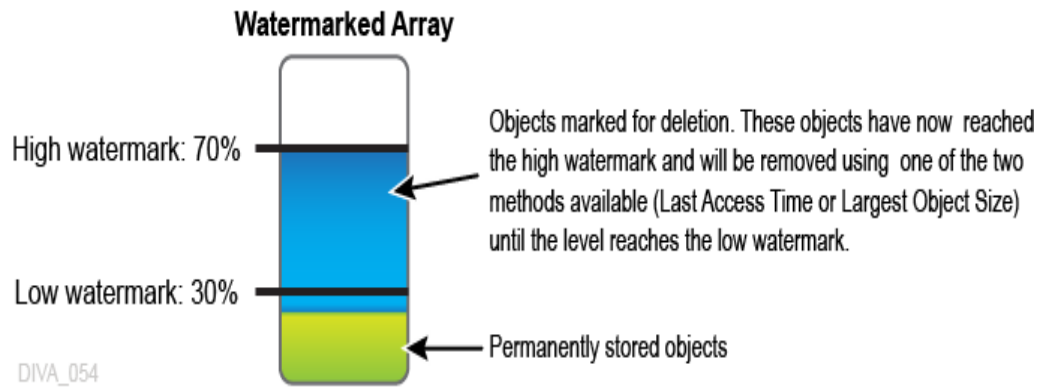
The following figure represents a watermarked disk array with permanently stored objects with a total size that is less than the Low Watermark:



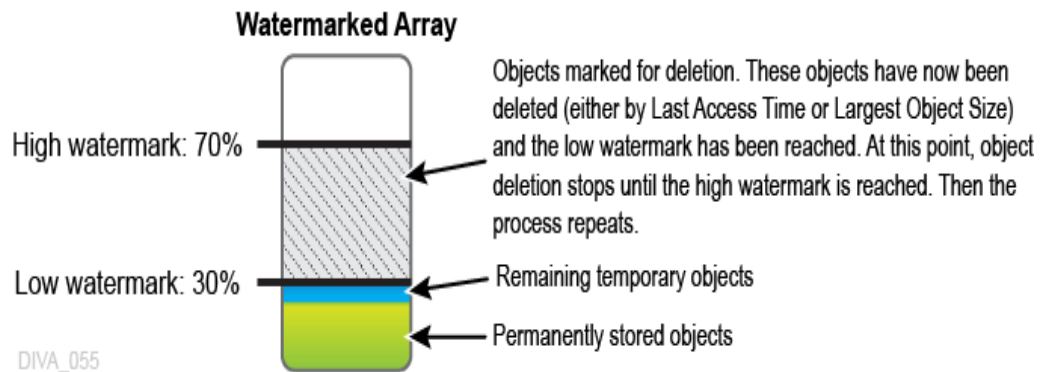
The following figure represents a watermarked disk array with permanently stored objects with a total size that is less than the Low Watermark, and temporarily stored objects with a total size that is higher than the Low Watermark:



The following figure represents a watermarked disk array with permanently stored objects with a total size that is less than the Low Watermark, and temporarily stored objects with a total size that has reached the High Watermark level. In this figure the temporary objects have now reached the High Watermark, and will be removed using one of the two methods available (*Last Access Time or Largest Object Size*) until the level reaches the Low Watermark.



The following figure represents a watermarked disk array after the temporary objects have been deleted down to the Low Watermark. Objects have now been deleted (*either by Last Access Time or Largest Object Size*) and the Low Watermark has been reached. At this point, object deletion stops until the High Watermark is reached again; then the process repeats.



Storage Plan Manager Workflows

The following sections describe the Storage Plan Manager workflows.

Storage Plan Manager Tasks

The SPM module runs several processes, each in charge of a particular task, and uses the DIVA Core Database to process actions. There are always multiple tasks processing in parallel when SPM is operational. All actions currently being executed by SPM reside in the *Action Queue* until the execution is complete, and then they are deleted from the queue. You can view actions in the queue using the Control GUI *SPM Actions* panel, which is located under the **Manager** tab. You must at least be connected to the DIVA Core Database to access this view.

The following list describes internal tasks used by SPM:

Update

This task is responsible for generating, or updating, the actions based on the SPM configuration so the *Load* task can load the actions into the Action Queue.

Load

This task loads the actions into the Action Queue from the database for processing.

Execution

This task executes the actions loaded into the Action Queue, and submits requests to the Manager as necessary.

DSM (Disk Space Monitor)

DSM monitors a particular array (*not individual disks*) to make sure it does not exceed the High Watermark value.

Recovery

When SPM starts, the Recovery task checks for the actions that are in an inconsistent state (**LOADED** or **PROCESSING**) and sets them to the **SCHEDULED** state. The action will be in an inconsistent state when SPM was terminated, or stopped during execution of the actions. If the rescheduled action has a DIVA Core Request ID associated with it, it will be loaded into the Action Queue as part of the Recovery task so that SPM can update the Action Status based on the status of the request submitted to the DIVA Core Manager.

An action will be in an inconsistent state and have a Request ID associated with it if SPM was terminated, or stopped, when SPM:

- Has executed the action
- Submitted the request to the DIVA Core Manager
- Was waiting for the status of the request

The Recovery task only runs during SPM startup. If there are no actions in an inconsistent state, the task will just end.

Simple Object Lifecycle Example

The following is a very simple object lifecycle for an object being processed through SPM. The process for this example lifecycle is as follows:

1. An object exists on the Video server.
2. The object is archived to a disk array that is known to DIVA Core, and is one of the SPM monitored mediums.
3. SPM processing now begins as follows:
 1. SPM checks if the object matches any of the SPM Filters.
 2. If the object matches one of the filters, processing by SPM continues by identifying which Storage Plan is associated with the corresponding filter.
 3. When the Storage Plan is identified, SPM detects the slots that are included in the managed Storage Plan.
 4. The slots contain the actions that will be performed on the object.
 5. SPM processes the detected actions (*included in the slots*) on the object until processing is complete, or the slot ends (*closes*).
4. According to the Storage Slot that was created for the Storage Plan in the example, 10 minutes after the object is archived, it is copied to a target tape group.
5. SPM deletes the object from the DIVA Core system and SPM 10 minutes later (*20 minutes after initially being archived to DIVA Core*).

Retrying SPM Failed Actions and Issue Resolution

When a requested action fails to execute properly, or a connection issue occurs, SPM will retry the action according to the following scenarios. The initial retry is automatic, and the requested action state remains as **PROCESSING**.

Manager Connection Failures

SPM uses the DIVA Core API (C++) to connect to the Manager. If the Manager connection is down, SPM continues retrying to establish the connection to the Manager until a connection is established.

Database Connection Failures

SPM will continue retrying to connect to the DIVA Core database every 20 seconds until a connection is established.

Missing Instances

The following example indicates what occurs if SPM is looking for an instance that does not exist:

A Storage Slot is configured with **Once Only** set to **N**. The slot starts five minutes after archiving, and ends 30 minutes after archiving.

- SPM finishes the Copy Action after 5 minutes.
- A user manually deletes the copy made by SPM after 10 minutes.
SPM senses the deletion and creates the copy again, because the slot period has not ended yet.
- The copy made by SPM is manually deleted again after 35 minutes.
SPM does not perform another Copy because the slot period has already ended.

If the **Once Only** parameter was set to **Y**, SPM will only make the copy one time. If the copy made by SPM is manually deleted, SPM will not make the copy again.

Action Retries

The following list describes when SPM will retry failed actions. See [Action Slot Workflow](#) and [Storage Slot Workflow](#) for Action Slot and Storage Slot workflows.

- Manager is Busy
If SPM could not execute the actions by submitting a request because the Manager is busy executing more requests than the value configured in `DIVA_MANAGER_MONITOR_MAX_REQUESTS` in the `spm.conf` configuration file, SPM will retry the same action after few seconds delay. The delay value is configured using the `DIVA_MANAGER_MONITOR_ACTION_DELAY` parameter in the `spm.conf` configuration file.
- Action Failed_Long State
When SPM executes an action by submitting a request to the Manager and the Request fails, the action is marked as **FAILED LONG**. SPM will retry the failed action after the delay period configured in the `UPDATE_ACTIONS_RETRY_FAILED_DELAY` parameter in the `spm.conf` configuration file. SPM continues retrying this action 1,000 times using the configured delay. If the action continues to fail, it is marked as *Rejected* and is never retried again.
After placed in a Failed_Long state, only Copy, Delete, and Restore Actions are retried. All other actions will not be retried.
- Action REJECT State
SPM sets an action to the *Rejected* state when it has reached the maximum number of retries and has failed. Rejected actions are never retried again. SPM also sets Copy Actions of a storage slot to the rejected state if the destination medium already has instances whose quantity is greater than the instances value configured in the Storage Slot. *This is a permanent failure.*
- Once Only Slots

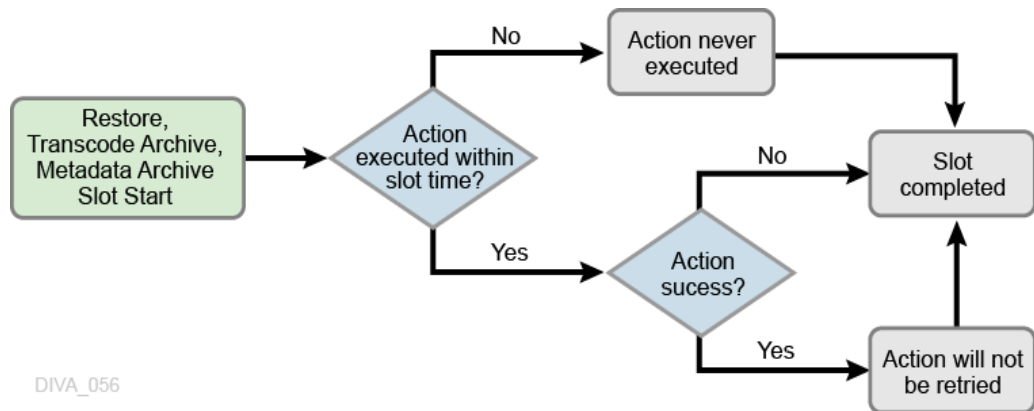
If the **Once Only** parameter is set to false for a Storage Slot, all of its actions will be retried throughout the **Slot Start Time** and **Slot End Time** period.

Action Slot Workflow

Action Slots have a specific workflow that encompasses what DIVA Core will do in certain cases. The flowchart below displays the typical Action Slot workflow. There are three possible outcomes:

- Success
- Failed Long
- Not executed within the configured slot time

The following figure depicts the Action Slot workflow:

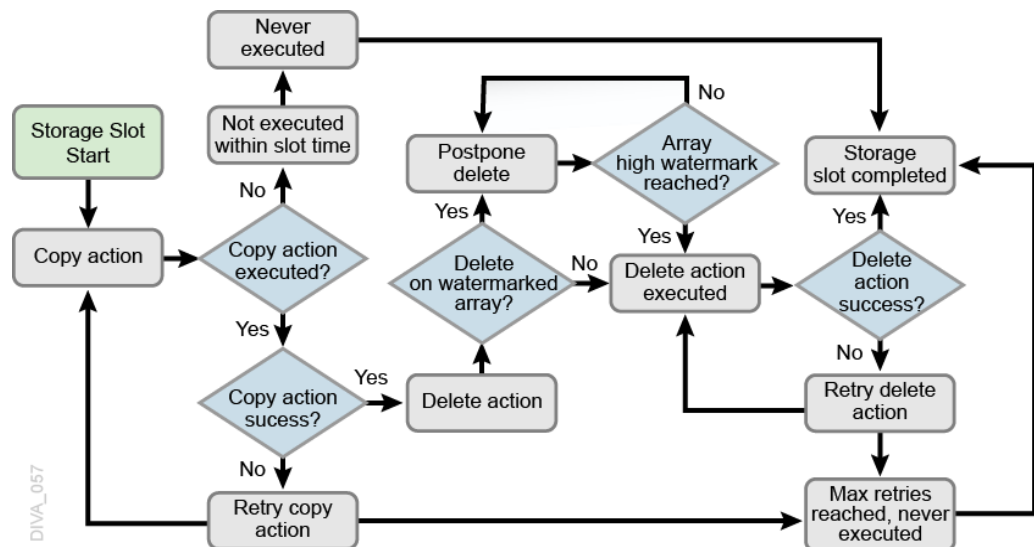


Storage Slot Workflow

Storage Slots also have a specific workflow that encompasses what DIVA Core will do in certain cases. The flowchart below displays the typical Storage Slot workflow. There are two possible outcomes:

- Success
- Failed Long

The following figure depicts the Storage Slot workflow:



Recommended Best Practices

The following sections describe Telestream recommended best practices for configuring and using the Storage Plan Manager.

SPM Configuration

This section identifies recommended best practices for SPM configuration.

Typical SPM Workflow

A typical SPM workflow consists of archiving objects to disk, and then copying them to tape. In this type of workflow, the SPM is configured to keep the disk copy for a fixed time (*non-watermarked mode*), or until no more space is available (*watermarked mode*). Keeping a disk copy for some period allows faster access to the data.

See [Action Slot Workflow](#) and [Storage Slot Workflow](#) for Action Slot and Storage Slot workflows.

Non-Watermarked (*Fixed Retention*) Mode

In Non-Watermarked Mode (*Fixed Retention*) Mode, the disk copy is kept until the **Slot End Time** (for example, two 2 days from the Archive), at which time the disk instance is deleted; the corresponding DeletelInstance SPM action is sent to the Manager, and then updates the action to the **Complete** state.

See [Managing DIVA Core Watermarks and Arrays](#) for more information on watermarking arrays.

Watermarked Mode

In Watermarked Mode, the disk instance is not deleted when the **Slot End Time** is reached. Instead, it is flagged as expired by setting the corresponding DeletelInstance SPM action to the **POSTPONED** state. When the disk's space use reaches a configurable High Watermark (for example, 90%), SPM will remove as many expired instances from the disk as required to lower the space use down to the configured Low Watermark (for example, 60%).

In Watermarked Mode, Telestream advises not to set the disk's **Slot End Time** for an extended period. The reason for this is so that SPM does not run short of expired instances when a disk purge is triggered. However, the **Slot End Time** should be far enough in the future to allow the tape copy to complete. If a tape copy is not available at the time of the DeletelInstance, the action will update to a **FAILED** status instead of **POSTPONED**. SPM will refuse to expire an instance on disk when no alternate instance is available.

A common disk **Slot End Time** for Watermarked Mode is three hours (180 minutes), or 24 hours (1440 minutes) if the slot's schedule only allows copies to be executed at a particular time. Confirm that the array is large enough to accommodate additional archived instances for the slot's configured time. If 100 Gigabyte of data per hour is archived at peak time, and the **Slot End Time** is configured to three hours, the array should be 500 Gigabyte (or larger).

See [Managing DIVA Core Watermarks and Arrays](#) for more information on watermarking arrays.

Choosing Appropriate Watermarks

You must choose your Watermarks carefully from the start. However, proper values are typically obtained after spending some time observing the system behavior. Telestream recommends starting with common values, and then fine-tuning them later. Typical common starting values are:

- HWM (*High Watermark*) = 90%
- LWM (*Low Watermark*) = 75%

The watermarks refer to the usage ratio of a particular array, not a disk. To compute an array's usage ratio, the Manager examines each disk in the array and divides the sum of each disk's used space by the sum of each disk's total capacity.

Example:

An array composed of two disks of the same size, one 100% full and one 50% full, is considered by the Manager to be 75% full. The same usage ratios with one disk of 2 Terabyte and one disk of 1 Terabyte will result in an 83% filling ratio for the array; 100% of 2 TB and 50% of 1 TB yields a total of 2.5 TB used, divided by a 3 TB total capacity.

See [Managing DIVA Core Watermarks and Arrays](#) for more information on watermarking arrays.

General Watermarking Rules

Telestream recommends that you adhere to the following general watermarking rules:

Do not set the High Watermark too high.

When the HWM is reached, SPM begins deleting expired instances. This process may take some time, especially if the instances are small, because the purge will require more DeleteInstance operations. Confirm that any archive activity will not store enough additional instances on the array during this process to fill it to 100%.

Example:

If the HWM is 90%, then the available space is $100 - 90 = 10\%$. If the array size is 2 Terabytes, this 10% represents 200 Gigabyte. If the SPM purge process encounters numerous small instances requiring deletion, the process will be slow and the archive activity may possibly store 200 Gigabytes (*or more*) during the purge's execution. This will fill the array to 100% during the process, and initiating Archive terminations.

If you experience this situation, try setting the HWM to a lower value.

Do not set the Low Watermark too low.

The lower you set the LWM, the shorter period disk instances will be kept on disk. The shorter period minimizes the chance to restore from disk, and the benefit of having disk instances.

If the array contains persistent data that cannot be purged (*for example, objects belonging to a Storage Plan that keeps disk instances for an unlimited time, or user files not belonging to DIVA Core*), you must set the LWM accordingly. If the persistent data accounts for 40% of the array's capacity, and the LWM is set to 30%, the purges will never complete. However, SPM will still purge what it can.

See [Managing DIVA Core Watermarks and Arrays](#) for more information on watermarking arrays.

Setting Up Tape Groups in DIVA Core

Configuring tape groups is a different topic in DIVA Core. However, you must complete creating and configuring tape groups before configuring the Storage Plans. The number of Storage Plans required is usually the same as the number of tape groups you configured. Tape groups enable DIVA Core to physically separate archived content into different tapes, and typically creating one Storage Plan per tape group is necessary. All Storage Plans are typically setup to be the same, except that the copy goes to different a tape group. However, the more tape groups DIVA Core uses, the less efficiently content will be stored across tapes.

If complex objects are going to be used in the system, you must setup tape groups containing tapes configured for AXF format. Complex objects are not compatible with the Legacy formatted tapes or disks. You can store non-complex objects using either Legacy or AXF format.

The following example illustrates how creating too many tape groups causes fragmentation of objects across the groups. Using fewer groups results in fewer Storage Plans to setup, less fragmentation across tapes, and is easier to maintain.

Having fewer tape groups will resolve the issue in the following example, and avoid fragmentation across the tape groups.

Example Configuration:

- 10 Tape Drives
- 30 Tape Groups with SetID=10
- 300 Total Tapes assigned to SetID=10

Results:

- Each Tape Group (*in the worst case*) will use at least ten tapes, and store files on each tape when an object is archived.
- After objects are archived to all 30 tape groups, all 60 tapes (*total*) are used.
- Over time, if any of the tape groups is heavily archived, and one of the tapes is 100% full, no more tapes are available.
- DIVA Core will run out of tapes, even though a lot of the tapes are still mostly empty (*each containing only one object*), but cannot be used because it was assigned to a different tape group.

Valid Reasons for Creating Multiple Tape Groups

Generally, you should only create multiple tape groups for a good reason. Multiple tape groups will cause tape group fragmentation, resulting in some tapes not being filled, and storage space being wasted.

The following are several *valid* reasons for creating multiple tape groups:

- Long and short form materials should be stored on different tape groups. If small objects are mixed with larger objects on the same tape, access to the smaller object will be delayed for an extended period until the larger object restore is complete.
- Content that is deleted regularly from the archive should be stored in a different tape group than content that will never (*or rarely*) be deleted. Deleting from tape will cause tape fragmentation and the fragmented space cannot be used until the tape is repacked. If the two types of content are mixed together, deleting will cause more tapes to become fragmented, and repacking will be required more frequently and take longer.
- Online and backup copies of the same content should be on two different tape groups. Backup copies are meant to be removed from the tape library and stored in an Iron Mountain type of facility as a backup. However, if both copies are mixed in the same tape group, it is impossible to determine which tape contains the backup copy. The result is being unable to remove it from the library for offline storage.
- When requirements necessitate using tapes purchased by different departments and enforcing that each department uses only the tapes they purchase themselves, you must create tape groups for each department with a different set of tapes.
- Different storage formats must be assigned to different groups. For example, one group would be Legacy Format while another group is AXF Format. Complex objects are not

compatible with Legacy Format, and must be processed to and from AXF formatted medium. Non-complex objects are compatible with both Legacy and AXF formats.

Invalid Reasons for Creating Multiple Tape Groups

Having too many tape groups will cause DIVA Core to work less efficiently, result in tape group fragmentation, and are more difficult to configure and maintain. Unless you have one of the previously described valid reasons, the recommended best practice for creating Tape groups is to use as few tape groups as possible. See [Setting Up Tape Groups in DIVA Core for recommended best practices](#).

The following are several *invalid* reasons for creating multiple tape groups:

- You want to store different content in different tape groups because you think it is easier to manage. DIVA Core manages the tapes. When restoring an object on a tape, DIVA Core automatically knows which tape the object is on, and mounts that tape, or notifies you to insert the necessary tape into the library. It will not require you to figure out which tape is needed.
- Creating many tape groups because it is easier to search. DIVA Core performs searches using object metadata stored in the database, not tape groups. The group only makes sure content is physically separated, and does not assist in searching functions.
- Creating multiple tape groups for cataloging. Users migrating from an analog tape environment tend to label what's recorded on each analog tape directly on the tape itself. A group of those tapes are then stored on different sections of a shelf. DIVA Core does not work efficiently this way, and this method should not be used.

Simple SPM Configuration Example

The following figure illustrates a simple SPM configuration example. The following occurs in this scenario:

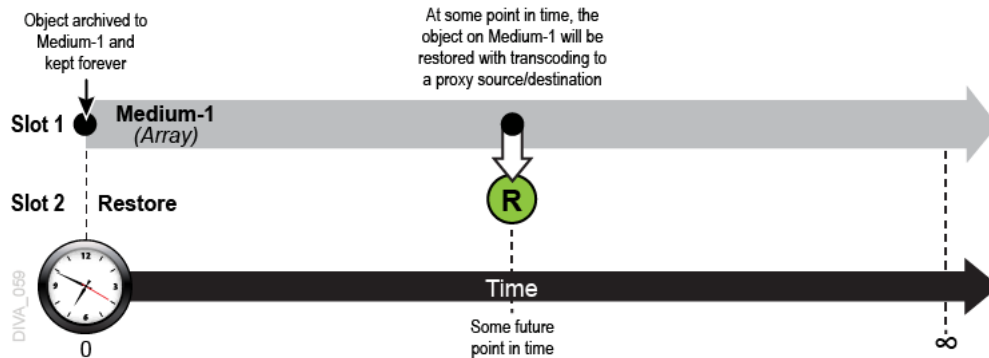
1. The object is archived to a watermarked array (Medium-1 with *Watermark* set to Yes) and held there for one day.
2. The object is immediately copied to DIVA Core Medium-2, and stored there forever.
3. At the one day mark, the object is marked for deletion from the Medium-1 array.

See [SPM Slot Types](#) and [Creating Slots](#) for more information about *Slot Types* and *Slot configuration*.

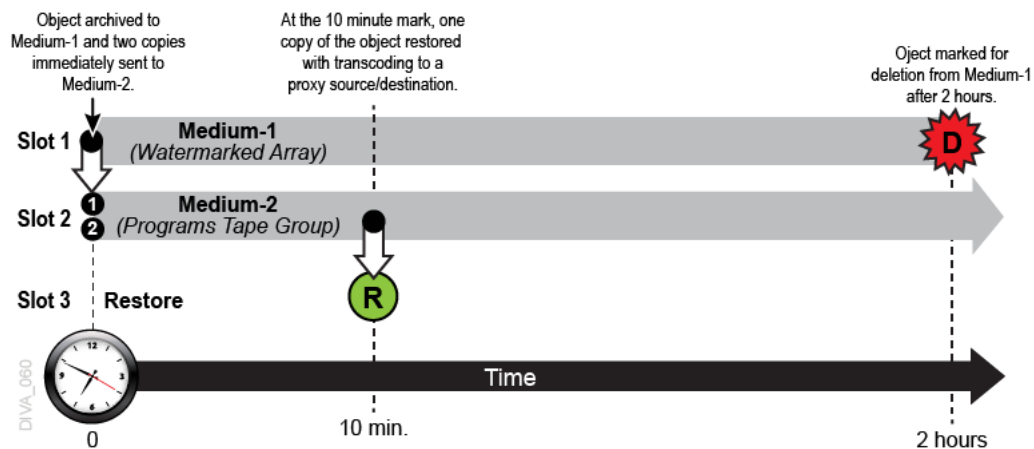


Additional SPM Configuration Examples

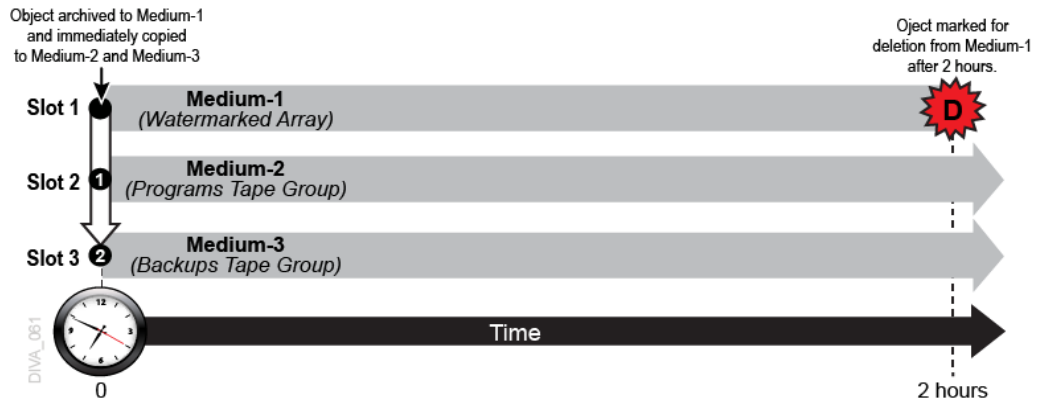
The following figure is an example of a more complex SPM configuration. In the first example, one copy is kept on the SPM monitored array forever. At some point in time, the object will be restored with transcoding to a Proxy Server.



The following figure is an example of a more complex SPM configuration. In the second example, one copy is kept on the SPM watermarked array (*with Watermark set to Yes*) for two hours, and two copies are immediately made to a tape group named Programs. At the ten minute mark, one copy will be restored to a Proxy Server.



The following figure is an example of a SPM configuration with one copy left in the online tape group (*Medium-2 named Programs*), and a second backup copy made to a different tape group (*Medium-3 named Backups*) that is to be taken offline. In this example, one copy is kept on the SPM watermarked array (*with Watermark set to Yes*) for two hours, and two copies are made immediately. One copy is made to a tape group named Programs, the second copy is made to a different tape group named Backups. The *Backups Tape Group* would typically be externalized from the DIVA Core system and sent to an Iron Mountain type of facility for offline storage.



Installation and Configuration

This chapter describes installation and configuration of SPM. References to installation and configuration procedures of additional software are included only to the extent required to allow interaction of those components with SPM. *Refer to the specific additional software documentation in the DIVA Core Documentation library for full installation and configuration instructions for specific additional elements where necessary.*

This chapter includes the following information:

- [Installation Prerequisites](#)
- [SPM Configuration File Parameters](#)
- [Request Type Distribution](#)
- [Storage Plan Definition](#)
 - [DIVA Command Storage Plans Tab](#)
 - [Recommended Best Practices](#)
 - [Creating the Storage Plan](#)
 - [Creating Mediums](#)
 - [Creating Filters](#)
 - [Alternate Methods of Assigning Storage Plans to an Object](#)
- [Creating Slots](#)
 - [Configuring Storage Slots](#)
 - * [Configuring Nearline Storage Slots](#)
 - [Configuring Transcode Archived Slots](#)
 - [Configuring Metadata Archive Slots](#)
 - [Configuring Restore Slots](#)
 - [SPM Delete Object Behavior](#)
 - * [ALLOW_OBJECT_DELETION](#) Parameter
 - * [DELETE_OBJECT_ONLY_LAST_INSTANCE](#) Parameter
- [Changing a Storage Plan](#)
 - [Disabling and Deleting Slots](#)
 - [Adding a Slot](#)
- [Watermark Based Disk Cleaning Management](#)

- [External Storage Plans](#)
- [Configuration Validation](#)

Installation Prerequisites

There are several prerequisites required before installing SPM as follows:

- DIVA Core 7.7 and later only supports the following database packages:
 - Windows only supports DIVAOracle Database Oracle 12c package OracleDivaDB_3-0-0_12_1_0_2_0_SE2_Windows_64-bit.zip and later. *No previous database package will work with DIVA Core 7.7 and later.*

The OracleDivaDB_3-0-0_12_1_0_2_0_SE2_Windows_64-bit.zip and later releases no longer include the 32-bit Oracle database client.
 - Linux only supports DIVAOracle Database package OracleDivaDB_3-0-0_12_1_0_2_0_SE2_OEL7_x86_64.sh and later.
- The database user name and password must be the same ones used for the DIVA Core installation.
- DIVA Core must be installed and running.
- DIVA Core SPM Service must be installed and running.

SPM Configuration File Parameters

SPM uses a plain text file to store its configuration parameters. The configuration file, named `spm.conf.ini`, is supplied with SPM and is located in the `%DIVA_HOME%\Program\SPM\bin` folder. You must rename the file to `spm.conf`, and change the parameter values to meet your requirements using a plain text editor (*for example, Notepad or Notepad++*). Although all parameters are important, some are more important than others, and the following sections describe all parameters.

The following describes the parameters used in the SPM configuration file. You can also set some parameters using DIVA Command. However, the settings in the SPM configuration file called `METADATA_ARCHIVE_TRANSFORMED_OBJECT_NAME` and `ALLOW_OBJECT_DELETION` will *always* override any settings created through the DIVA Command.

The following parameter is for the SPM Windows Service Name:

SERVICE_NAME

This parameter identifies the DIVA Core SPM Service Name. You use this variable to specify the name of the Windows Service. This is useful when multiple instances of SPM are operational on the same server by giving a different name to each instance.

If you use this variable, the service name will be `DIVA Core Spm - <SERVICE_NAME>`. If you do not use this variable, the service name will be `DIVA Core Spm`.

The following parameters are for the DIVA Core Manager:

DIVA_MANAGER_ADDRESS

This parameter identifies the IP address, or DNS Name, of the DIVA Core Manager host computer. The default value is `localhost`.

DIVA_MANAGER_PORT

This parameter identifies the DIVA Core Manager port number. The default value is `9000`.

The following are connection parameters for the DIVA Core Oracle Database:

ORACLE_USER

This parameter identifies the DIVA Core Database user name. There is no default for this parameter, but the typical user name is diva.

ORACLE_PASSWORD

This parameter identifies the DIVA Core Database user password. There is no default for this parameter.

ORACLE_CONNECTION

This parameter identifies the DIVA Core Database connection string. This is usually the SQL*Net address name declared in the local Oracle client TNSNAMES.ORA file for the DIVA Core Oracle instance. The typical connect string is lib5.

ORACLE_POOL_SIZE

Caution: Do not change this value. Reducing the value can lead to database connection issues, and cause SPM to freeze.

This parameter identifies the maximum number of database connections allowed by SPM. The default value is 5.

The following are parameters for the SPM Manager Monitor:

DIVA_MANAGER_MONITOR_MAX_REQUESTS

SPM will check with the DIVA Core Manager to find out how many requests are currently processing before it sends any requests. This parameter limits the number of requests (*processing and pending from all sources*) the SPM service will attempt to send to the DIVA Core Manager. If the number of requests already processing on the Manager is greater than this setting, SPM will not send any additional requests at that time. The valid range is 10 to 500, and the default value is 250.

DIVA_DELETE_MAX_REQUESTS

SPM will check with the DIVA Core Manager to find out how many requests are currently being processed. If the number is less than the DIVA_MANAGER_MONITOR_MAX_REQUESTS value, SPM will verify how many Delete Object and Delete Instance requests are being processed. If the number is less than this parameter's value, SPM will send additional Delete requests equal to the difference between the number of Delete requests processing, and the value of this parameter.

Example:

```
DIVA_MANAGER_MONITOR_MAX_REQUESTS = 100
DIVA_DELETE_MAX_REQUESTS = 50
```

In this example, when SPM checks with the Manager, if the Manager is currently processing 75 requests total, and only 25 of them are Delete requests, SPM will send another 25 Delete requests to Manager, because both numbers are less than the parameter's value in the configuration file. The valid range is 1 to 300, and the default value is 300.

This value identifies how many of this type of request are simultaneously processed from the *Action Queue*.

This value cannot exceed the value of DIVA_MANAGER_MONITOR_MAX_REQUESTS.

DIVA_RESTORE_MAX_REQUESTS, DIVA_TRANSCODE_ARCHIVE_MAX_REQUESTS, and DIVA_METADATA_ARCHIVE_MAX_REQUESTS

These parameters restrict the number of Restore, Transcode Archived and Metadata Archive requests SPM can submit to the Manager simultaneously.

These parameters must all be enabled or disabled together.

The valid range is 0 to 300 and the default value is -1.

The value you use identifies how many of this type of request are allowed in the Action Queue. Using the default value of -1 disables these parameters. SPM will not execute these actions if the parameter is set to a value of 0.

Example:

```
DIVA_RESTORE_MAX_REQUESTS=3
DIVA_TRANSCODE_ARCHIVE_MAX_REQUESTS=52
DIVA_METADATA_ARCHIVE_MAX_REQUESTS=100
```

In this example, SPM will start normally using these configuration settings because they are all enabled, even though the values are different for each parameter (3, 52, and 100).

Example:

```
DIVA_RESTORE_MAX_REQUESTS=3
DIVA_TRANSCODE_ARCHIVE_MAX_REQUESTS=-1
DIVA_METADATA_ARCHIVE_MAX_REQUESTS=-1
```

In this example, SPM will fail to start using these configuration settings because the first one is enabled with a value of 3, but the next two parameters are disabled. *They must all be either enabled or disabled, not a combination of both.*

DIVA_MANAGER_MONITOR_DELAY

This parameter identifies the number of seconds between checks of the number of requests (*processing and pending*) on the DIVA Core Manager. The valid range is 1 to 600, and the default value is 30.

DIVA_MANAGER_MONITOR_ACTION_DELAY

This parameter identifies the number of seconds to delay an action for execution if the DIVA Core Manager is processing more than the value of the DIVA_MANAGER_MONITOR_MAX_REQUESTS parameter during its execution. The valid range is 1 to 3600, and the default value is 60.

The following are parameters for the SPM Controller:

ACTION_STEP_WATCH_DELAY

This parameter identifies the minimum delay (*in seconds*) before the next check on the request status. The valid range is 1 to 60, and the default value is 10.

ACTION_QUEUE_SIZE

This parameter identifies the maximum size of the Action Queue, including the number of actions that can be stored in the queue. The valid range is 1 to 300.

The following are rest time parameters for SPM working tasks:

SPM_EXECUTION_THREAD_REST

This parameter identifies the resting time for the *Execution Task* in seconds. The valid range is 0 to 600, and the default value is 5. Entering 0 disables the task completely.

SPM_UPDATE_THREAD_REST

This parameter identifies the resting time for the *Update Task* in seconds. The valid range is 0 to 600, and the default value is 20. Entering 0 disables the task completely.

SPM_LOAD_THREAD_REST

This parameter identifies the resting time for the *Load Task* in seconds. The valid range is 0 to 600, and the default value is 20. Entering 0 disables the task completely.

Note: The *Recovery Load Task* will never rest; it stops upon completion of all work.

The following are Row Chunk Size parameters that SPM will process simultaneously:

RECOVERY_ACTIONS_CHUNK

This parameter identifies the number of actions SPM will process (*from the database*) simultaneously during each call of the *Recovery Task*. The valid range is 1 to 65535, and the default value is 500.

UPDATE_ACTIONS_CHUNK

This parameter identifies the number of actions SPM will process simultaneously during each call of the *Update Task*. The valid range is 1 to 500, and the default value is 50.

GET_ACTIONS_CHUNK

This parameter identifies the number of actions SPM will process simultaneously during each call of the *Load Task*. The valid range is 1 to 100, and the default value is 25.

UPDATE_ACTIONS_NEXT_UPDATE

This parameter identifies the time (*in minutes*) added to the action's date of next update after it has been updated by the *Update Task*. Current releases of DIVA Core SPM is more dynamic in nature than previous release, and constantly reexamines actions. The date of next update is used internally to sort the actions to be reexamined. The valid range is 10 to 65535, and the default value is 20160 (*two weeks*).

UPDATE_ACTIONS_RETRY_FAILED_DELAY

This parameter identifies the delay (*in minutes*) before a long retry of a failed action. After this value is reached, the *Update Task* will reschedule all actions in the **FAILED LONG** state to be executed again. This parameter configures the retry of SPM actions and will not retry the action if its corresponding slot is modified after the action is put to a **FAILED_LONG** state - it will wait for the **UPDATE_ACTIONS_NEXT_UPDATE** to update the actions according to the latest slot changes before executing the action. The valid range is 10 to 65535, and the default value is 720 minutes.

The following are SPM processing options:

ALLOW_OBJECT_DELETION

Caution: This parameter causes complete object deletion when enabled!

An object can be deleted when a Storage Plan has no slot at a given time. You must manage this feature, and define the Storage Plans, carefully because you can lose many objects according to the Storage Plan.

The valid settings are true or false, and the default value is false.

You set this field to true to enable object deletion. The Storage Plan definition in the database can either allow or deny deletion. If deletion is denied, configuring a Storage Plan to enable deletion will have no effect.

Note: The setting in the SPM configuration file for this parameter overrides any settings created through DIVA Command.

For example, if there is slot starting at day 0 and ending at day 30, and another slot starting at day 61 with an unlimited retention, objects will be deleted after 30 days because there are no slots during the second month (*days 31 to 60*).

DELETE_OBJECT_ONLY_LAST_INSTANCE

This parameter works with the ALLOW_OBJECT_DELETION parameter, and forces SPM to Delete Object at the end of the Storage Slot. Deletion only occurs if this object is the last instance in the entire DIVA Core system, and this last instance exists in the Storage Slot medium that has the *highest Slot End Time* among all Storage Slots of the Storage Plan. Otherwise, SPM will never perform a Delete Object at the end of the Storage Slot, it will always only do a Delete Instance instead. Refer to [SPM Delete Object Behavior](#) for more detailed information.

METADATA_ARCHIVE_TRANSFORMED_OBJECT_NAME

This parameter defines whether SPM will use the original, or transformed, object name as the target object name in a METADATA_ARCHIVE action. This setting overrides any configuration performed through DIVA Command.

The default setting is true. When this value is true, SPM uses the transformed object name. When this value is false, SPM uses the original object name.

The following is a DSM task option:

DSM_DIW_REQUEST_PRIORITY

This parameter identifies the priority of the requests produced by DELETE INSTANCE actions. The valid range is 1 to 100, and the default value is 15.

The following is a Rest Time parameter for DSM working tasks:

DSM_SPACE_MONITOR_THREAD_REST

This parameter identifies the resting time for the *DSM Task* in seconds. The valid range is 0 to 600, and the default value is 10. Entering 0 disables the task completely.

The following is a Row Chunk Size parameters that DSM will process simultaneously:

DSM_ACTIVATE_ACTIONS_CHUNK

This parameter identifies the number of actions DSM will process at a given time during each call of the procedure. The valid range is 1 to 65535, and the default value is 50.

The following are parameters for disk arrays being monitored:

ARRAY{number}

This parameter specifies watermark values for disk arrays. For each array, you must create an ARRAY{i} parameter, where {i} identifies the array number. The first array number is 1. The {i} must always be increased only by one.

The information for the Array is as follows:

```
ARRAY_NUMBER = "array name"; "watermark low-level percent"; "watermark high-level percent" ["mounted disk path1", "mounted disk path2", and so on]
```

ARRAY_NUMBER

This parameter identifies the name known to SPM for this array (*for example, ARRAY1*).

"array name"

This parameter identifies the name of the disk array as it is named in DIVA Core. *It is not the SPM medium name.*

"watermark low-level percent"

This parameter identifies a number from 0 to 100 representing the lower array space setting use percent. DSM will attempt to reach this value when cleaning.

"watermark high-level percent"

This parameter identifies a number from 0 to 100 representing the higher array space use percent. DSM will start the cleaning process when the array space use is higher than this level.

["mounted disk path1", mounted disk path2", and so on]

This parameter identifies the mounting points of the array disks. Either *none*, *one*, or *many*, separated by a comma.

- No spaces are allowed.
- If *one* or *many*, DSM will access arrays through the file system (*old*) interface.
- If *none*, DSM will access arrays through the DIVA Core API (*new*) interface (*recommended*).

If the monitored array is a password protected network share, the following syntax is allowed as a mount point:

```
cifs://user:pwd@\\nas\share
```

When the SPM Service is configured with a CIFS array, the log in of the SPM Service must be changed from the default Local System to a valid Windows user.

DIVA Core Datahubs in the Linux operating system do not support UNC paths for CIFS managed disks. However, you can define a local path to a mounted SMB share. UNC paths are supported for SMB managed disks if the UNC path is directly mounted on the Windows Datahubs.

Use the following steps to change the SPM Service login:

1. Run the Windows Services application (*services.msc*).
2. Select the SPM Service requiring the log in change.
3. Right-click the SPM Service, and then select **Properties**.
4. Select the **Log On** tab in the **Properties** window of the SPM Service.
5. Select the **This account** option.
6. Enter a valid Windows user name and password.
7. Click **Apply** (or **OK**) to commit the changes.

Examples:

```
ARRAY1 = ShortClips;75;90 (this is the recommended syntax)
```

```
ARRAY2 = Raid_001;60;85;X:\;Y:\;Z:\ (this is the legacy syntax)
```

The following is a Trace Log level parameter:

TRACE_LEVEL

This parameter identifies the level of tracing to use for the logs. The valid range is 1 to 2, and the default value is 2.

Caution: Setting this parameter to 1 will generate large volumes of trace information, and must be used for debug and validation purposes only!

- Setting this parameter to 1 will trace entry and exit points in all important functions.

- Setting this parameter to 2 will produce a normal, production level, trace.

Request Type Distribution

SPM contains three *Request Type Distribution* options that are defined in the SPM configuration file. These parameters restrict the number of Restore, Transcode Archived, and Metadata Archive actions that can be executed simultaneously. The default values for the following parameters are -1 in the SPM configuration file:

- DIVA_RESTORE_MAX_REQUESTS
- DIVA_TRANSCODE_ARCHIVED_MAX_REQUESTS
- DIVA_METADATA_ARCHIVE_MAX_REQUESTS

Acceptable values for these three parameters are -1, 0, and positive integers. Leaving the configuration file settings for these parameters to the default (-1) causes SPM to ignore the settings, and the defined behavior will not be changed.

You should set all, or none, of these parameters to a value higher than the default (-1) setting. For example, you cannot set DIVA_RESTORE_MAX_REQUESTS=3, but keep DIVA_TRANSCODE_ARCHIVED_MAX_REQUESTS=-1. If only one or two parameters are defined with other values, SPM will refuse to start because of the incorrect configuration.

Note: Whenever you change these parameter values, you must restart SPM for the new values to take effect.

There are several rules for Request Type Distribution as follows:

- SPM must not execute more Restore requests than the DIVA_RESTORE_MAX_REQUESTS value simultaneously. If the DIVA_RESTORE_MAX_REQUESTS=0, SPM will not execute any Restore requests.
- SPM must not execute more Transcode Archived requests than the DIVA_TRANSCODE_ARCHIVED_MAX_REQUESTS value simultaneously. If the DIVA_TRANSCODE_ARCHIVED_MAX_REQUESTS=0, SPM will not execute any Transcode Archived requests.
- SPM must not execute more Metadata Archive requests than the DIVA_METADATA_ARCHIVE_MAX_REQUESTS value simultaneously. If the DIVA_METADATA_ARCHIVE_MAX_REQUESTS=0, SPM will not execute any Metadata Archive requests.
- SPM will attempt to reserve the configured number of actions in the SPM queue to execute the corresponding number of the requests (if available). The number of simultaneous Restore requests may be less than DIVA_RESTORE_MAX_REQUESTS, even if some Restore actions are ready to be executed immediately. This configuration must be observed for less than 50 percent of the execution time.

Example:

```
DIVA_RESTORE_MAX_REQUESTS=3
DIVA_MANAGER_MONITOR_MAX_REQUESTS=100
```

Workflow:

- If Restore Actions exist and are scheduled, SPM will execute three Restore requests at the same time (*most of the time*).
- SPM will never execute more than three Restore requests.
- Sometimes (*less than 50 percent of operational time*) SPM will execute 0, 1 or 2 Restore requests when Restore Actions exist, and are scheduled.

- If no Restore Actions exist, and are scheduled, other actions will be executed so the total amount of requests executed will be 100 (*not 97*).

By default, the Execute process will perform Delete Actions first, and then other request types by *Slot Priority*. If this feature is configured, SPM will still perform Delete Actions first, and then decide the number of Copy, Restore, Metadata Archive, and Transcode Archived requests to send, and then for each type of request, sort the actions by *Slot Priority*.

Example:

- Two Copy Slots have the defined priorities 90 and 95, and 1000 Copy Actions are to be executed.
- There are two Restore Slots with priorities 30 and 35, and 100 Restore Actions to be executed.
- DIVA_RESTORE_MAX_REQUESTS=3
- DIVA_MANAGER_MONITOR_MAX_REQUESTS=100

Workflow:

- SPM will disregard the priority between the slot types, so 97 Copy requests will be scheduled, and 3 Restore requests will be scheduled.
- SPM will schedule Restore requests with the priority of 35 first.
- Delete Object and Delete Instance requests always have higher priority.

Storage Plan Definition

SPM requires configuration of Storage Plans before execution. You configure the SPM Storage Plans using DIVA Command.

There are two tabs in DIVA Command related to SPM configuration; **Storage Plans** and **Slots**.

DIVA Command Storage Plans Tab

The **Storage Plans** tab in DIVA Command has three sections:

- *Storage Plans*
- *Media Groups*
- *Filters*

Each of these sections is configured independently, but associates with other sections to complete the configuration.

Recommended Best Practices

Telestream recommends that you use the following order when configuring SPM through DIVA Command:

1. Create the Storage Plans.
2. Create the Media Groups.
3. Create the Filters.
4. Create the slots (using the **Slots** tab).

Creating the Storage Plan

The first step in configuring SPM is to create the Storage Plans. Use the following procedure to create a storage Plan:

1. Click the + in the *Storage Plans* section of the **Storage Plans** tab in DIVA Command.
2. When the *Add New Row* dialog box opens, begin configuring the new Storage Plan. Enter an name in the new **Storage Plan Name** field.
3. Use the lists to select the values for the parameter fields as follows:

Storage Plan Name

This parameter identifies the name of the Storage Plan.

Allow Last Instance Deletion

Caution: You must use this parameter with caution. Data loss can occur if set incorrectly.

This parameter determines whether SPM is allowed to delete the last instance of an object when there is only one instance remaining on the DIVA Core system. Set to Y or N to allow, or deny, deletion of the last instance of an object.

This parameter only applies to Storage Slots, and is overridden by the configuration of *ALLOW_OBJECT_DELETION* in the SPM configuration file.

Please specify origin (Internal/External)

Set to I for internal, or E for external origins. This parameter is typically used for all SPM actions. The internal (I) setting is for objects contained within the DIVA Core system and is the typical selection. The external (E) setting is mainly used during data migration in combination with the SPM API. Only Telestream should use the external setting in this release. For example, for use with DIVA Core Automatic Data Migration from Avalon to DIVA Core.

Group/Array Name

Select the default media from the list of media managed in the DIVA Core system. The DIVA Core Manager uses the selected media for object placement when a new object is found, and the Storage Plan in use has an active Storage Slot. This placement occurs when an Archive Request is submitted to the Manager without a destination Media, and only a Storage Plan selected in the request.

4. Click **OK** to save the Storage Plan. The new Storage Plan will be displayed in the *Storage Plans* section of DIVA Command.

Creating Mediums

The Media Groups Section has two purposes:

- Any medium that is defined in the *Media Groups* section of the DIVA Command **Storage Plans** tab is available for use by SPM. If a new object is placed on a medium not included in the **Media Groups** list, it will not be managed by SPM and is assigned the **SPM_DEFAULT** Storage Plan.
- To select a medium as the target for actions when creating slots, it must be defined in the **Media Groups** list.

Use the following procedure to create a Media Group:

1. Navigate to the DIVA Command **Storage Plans** tab.

2. Click the + icon on the top of the *Media Groups* section.
3. When the *Add New Row* dialog box appears, begin configuring the new mediums.
4. Enter the information in the appropriate fields, and use the menu lists to select the remaining options as follows:

Medium Name

Enter the *Medium Name* in the **Medium Name** field.

Storage Name

Enter the desired *Storage Name* in the **Storage Name** field. The recommended *Storage Name* is DIVA. *This value is not currently in use.*

Group/Array Name

Select the *Tape Group* or *Disk Array* to be associated with this medium from the list.

The selections available in the list are determined by what media is defined in the DIVA Core system.

Watermarked

Monitors the Medium's usage (available space, used space, and so on). Select Y, N, or M to specify whether to apply watermarking to this medium. Refer to Sections 1.7.1 and 1.8 for detailed information on Watermarking.

In general it is recommended that slots are not deleted, but disabled instead. Deleting a slot does not remove the content from the DIVA Core system.

In the case of a Storage Slot, setting the **Slot End Time** to 0 will force SPM to delete any contents created by this slot and once all the contents are removed, the Storage Slot can be deleted or disabled. If retaining the content in the Storage Slot is desired, but no further processing of future actions is required, disabling the slot instead of deleting it is the safer way to do this.

The Watermark-Based Disk Cleaning Management options are as follows:

Yes (Y)

This selection applies watermarking.

No (N)

This selection does not apply watermarking.

Mixed (M)

This selection applies a combination of watermarking. The disk cleaning action taken depends on what event occurs first; either the slot reaches its **End Time**, or the High Watermark is reached.

Mixed Mode only works if **Once Only** is set to yes (Y) for the slot.

Watermarks are only used for Storage Slots, and only for disk arrays configured as Mediums.

Disk Cleaning Strategy

Defines the cleaning strategy to perform on objects marked for deletion on the Array when the high watermark is reached. See [Watermark Based Disk Cleaning Management](#) for detailed information on disk cleaning management.

There are two options available:

By Last Access Time

Older objects are cleaned up before recently accessed objects.

By Object Size

The largest objects are cleaned up first until the Low Watermark is reached.

5. Click **OK** to complete the process.

The new Media Group is now displayed in the *Media Groups* section of the **Storage Plans** tab.

Creating Filters

Filters determine whether an action must be performed on an object, or if it should be ignored. Filters only functions for mediums defined in the *Mediums* list and monitored by SPM.

When a new object is archived into DIVA Core, and it matches a defined filter, a Storage Plan is assigned to that object as follows:

- If the new object does not meet any filter criteria, the default Storage Plan will be assigned.
- If an object satisfies multiple filters, it will be assigned the Storage Plan of the matching filter with the lowest **Filter ID**.

Use the following procedure to create a filter:

1. Navigate to the DIVA Command **Storage Plans** tab.
2. Click the + icon on the top of the *Filters* section.
3. When the *Add New Row* dialog box appears, begin configuring the new filter.

Leaving the default * in **Object Category**, **Object Source**, and **Object Name** fields causes no filtering to be identified for these parameters.

4. Enter the information in the appropriate fields, and use the menu lists to select the remaining options as follows:

Filter Name

Enter the *Filter Name* in the **Filter Name** field.

Id

The *Filter ID* is auto-generated by SPM starting with *Filter 0*.

Media Filter

Use the menu to select the Mediums you previously created.

Object Category Filter

Enter any object category filters you require. Leaving the default * will cause no filtering for this parameter.

Object Source Filter

Enter any object category filters you require. Leaving the default * will cause no filtering for this parameter.

Object Name Filter

Enter any object category filters you require. Leaving the default * will cause no filtering for this parameter.

Min. object size

Enter the minimum object size.

Max. object size

Enter the maximum object size.

Size units

Use the menu to select the size units (**B**, **KB**, **MB**, and **GB**. *The initials refer to Byte, KiloByte, MegaByte, and GigaByte respectively*).

Storage Plan

Use the menu to select the Storage Plan to associate with this filter.

5. Click **OK** to complete the process.

The new Filter is now displayed in the *Filters* section of the **Storage Plans** tab.

Alternate Methods of Assigning Storage Plans to an Object

There are several alternate methods of assigning a Storage Plan to an object including the following:

- Assigning a new Storage Plan to an Object using the DIVA Core GUI.
- Using a DIVA Core API; C++, Java, DIVA Enterprise Connect. *See the appropriate API documentation in the DIVA Core Documentation library.*
- Including a Storage Plan name when submitting an Archive request forcefully applies a Storage Plan to the object and avoid the filters.

Media Mapping enables you to configure and alternate destination media, and to forcefully apply a Storage Plan, avoiding filters, when an object is archived to a specific tape group or disk array.

You configure Media Mapping in DIVA Command under the **Sets, Groups & Media Mapping** tab, in the *Media Mapping* section as follows:

1. Open DIVA Command and navigate to the *Media Mapping* section under the **DIVA Configuration, Storage Plans** menu item.
2. Click the + icon to open the *Add new row in Media Mapping* dialog box.
3. Enter the appropriate information in the fields as follows:

Id

This field is automatically system generated and is not editable.

Name

Enter the name to use for this mapping in the **Name** field.

From

Use the menu list to select the media to use for this mapping.

Map to Media

Use the menu list to select the Destination Media for this mapping.

Map to Storage Plan

Use the menu list to select the Storage Plan to use for this mapping.

For example:

- Media Array1 is mapped to Array2. In this scenario, objects archived to the media named Array1 will be transferred to the media named Array2 as its destination. *If there is a filter configured with destination media as Array2, the Storage Plan configured in that filter will be assigned to the archived object.*

- Media Array1 is mapped to the Storage Plan named storagePlan1. In this scenario, objects archived to the media named Array1 will be assigned the Storage Plan named storagePlan1, and avoid filters.
- Media Array1 is mapped to Array2, and also the Storage Plan named storagePlan1. In this scenario, objects archived to the media named Array1 will be transferred to the media named Array2 as its destination, assigned the Storage Plan named storagePlan1, and avoid filters.

Creating Slots

The following sections describe the process for creating each different type of slot.

Configuring Storage Slots

The Storage Slot is the only slot that has two actions associated with it. It will create a copy of the object when it starts and delete it when the slot ends, unless the medium used is watermarked. See [Watermark Based Disk Cleaning Management](#) for watermarking details.

The copy action will occur only if the slot destination medium does not already have the required number of instances identified in the slot configuration. The Delete Action will only occur if the slot is specifically configured to perform the Delete Action (*slot has an ending time defined*).

Use the following procedure to configure a Storage Slot:

1. Open DIVA Command, and navigate to the **Slots** tab under the **DIVA Configuration, Storage Plans** menu item.
2. Click the + icon on the top right of the *Slots* section.
3. When the *Slot Configuration* dialog box opens, configure the options as follows:

Storage Plan

Use the menu list to select the *Storage Plan* to be associated with this slot.

Request Type

Select the type of request for this slot (*Storage, Transcode Archived, Metadata Archive, or Restore*). Select **STORAGE** in this case.

Slot Name

Enter a name for the slot in the **Slot Name** field.

Slot Begin Time (Minutes)

This parameter identifies when the action will occur. If set to zero the action is initiated as soon as the object is archived. If set to another number, for example 10 (*minutes*), the action will execute 10 minutes after the object is archived.

Slot End Time (Minutes)

Caution: If the **Slot Begin Time** and **Slot End Time** are both set to zero, then the behavior is unknown, except for Storage Slots.

Setting this parameter to -1 indicates that the slot will never end (*it is permanent*). If set to another number, for example 10 (*minutes*), the Delete Action will execute 10 minutes after the object is archived.

If a Storage Slot's **Slot Begin Time** and **Slot End Time** are the same (for example, 0, 0 or 10, 10), the slot is what may be referred to as an idle slot. SPM creates a Copy and a DeleteInstance Action and these actions get updated but NOT executed.

The only exception is if the medium is watermarked. If the medium is watermarked then the DeleteInstance Action will be executed when a disk clean-up is necessary and it will go through the usual **POSTPONED** through **COMPLETED** cycle.

In practice, creating an idle slot is useful for mediums where an external tool creates instances (not SPM), but use of the SPM's watermark-based clean-up mechanism is desired.

Example (typical slot):

Slot Begin Time (Minutes): 10

Slot End Time (Minutes): 20

Workflow:

The original object is archived onto the source medium.

Ten minutes later, the slot actions begin and it is copied to the target medium.

SPM deletes the copy from the target medium 10 minutes later.

Example (idle slot):

Slot End Time (Minutes): 0

Slot Begin Time (Minutes): 0

Workflow:

The object is archived on medium Array1, and the idle slot is defined for medium Array2. An Array2 Copy Action is created, and the status is set to **SCHEDULED**. Then, an Array2 DeleteInstance Action is created, and the status is set to **COMPLETED**.

An external tool creates an instance on Array2 using the *Copy* function. The Array2 Copy Action status is set to **COMPLETED**, and the Array2 DeleteInstance Action status is set to **POSTPONED**.

The Array2 hits the High Watermark. The Array2 DeleteInstance Action is executed, and the status is set to **COMPLETED**.

The Array2 Copy Action status remains as **COMPLETED**.

Enabled

Determines whether the slot is active. Selecting **Y** indicates the slot is enabled, and **N** indicates it is disabled. When a slot is disabled its actions are not executed, however they are still created, and the status is updated. When the slot is enabled again, pending actions are executed immediately.

Examples:

A new object that is archived and assigned to a Storage Plan with a Tape Storage Slot will have the Tape Slot's Copy Action created, but not executed. Therefore, no Copy request is sent to the Manager.

A DeleteInstance Action reaching its execution time will not send the Delete Instance request to the Manager, but if somebody manually deletes that instance using the Control GUI, the action will be updated to the **COMPLETED** status.

Request Execution Begin Time (HH:MM)

This field is the slot execution window opening time in 24 hour time. If set to 00:00 the slot opens at the beginning of each day. If set to another time, for example 08:00, it will open at that time (*in this case 8:00 am*).

Request Execution End Time (HH:MM)

This field is the slot execution window closing time in 24 hour time. If set to 24:00 the slot closes after each day. If set to another time, for example 17:00, it will close at that time (*in this case 5:00 pm*).

Setting the **Request Execution Begin Time** and **Request Execution End Time** to something other than an entire 24 hour period will allow for scheduling of different functions through SPM at different times of the day (*for example overnight jobs*). If an object is archived to the source medium outside of the designated time frame for the slot, even though the object meets the Filter and Storage Plan criteria, no actions from this particular slot will occur.

If the original object was archived to the source medium while the slot was inactive (closed) and has passed the **Slot End Time**, when the slot finally becomes active (*open*), no Delete Action will occur.

Note: This is not the case for Storage Slots. For Storage Slots the DeleteInstance Action will still be executed.

Example (non-Storage Slots):

Slot Begin Time (Minutes): 10

Slot End Time (Minutes): 20

Request Execution Begin Time (HH:MM): 08:00

Request Execution End Time (HH:MM): 14:00

Workflow:

A new object is placed onto the source medium at 07:00 (*while the slot is closed*). If the slot had been open at 07:00 when the new object was created it would be copied to the target at 07:10 and then deleted from the target at 07:20. Because the slot was not open when the new object was created, and the **Slot End Time** has passed when this slot opens at 08:00, no actions will be taken on the object.

If a new object is created on the source medium at 14:15 today, then tomorrow when this slot opens, no actions will be taken on the object because the **Slot End Time** has passed.

If an object is created on the source medium at 07:59 (*before the slot opens*), at 08:09 (*10 minutes after the object existed on the source*) the object will be copied to the target medium because the **Slot End Time** has not yet passed. Then at 08:19 (*20 minutes after the object existed on the source*) the object instance on the target will be deleted.

Example (Storage Slots):

Slot Begin Time (Minutes): 10

Slot End Time (Minutes): 20

Request Execution Begin Time (HH:MM): 08:00

Request Execution End Time (HH:MM): 14:00

Workflow:

A new object is placed onto the source medium while the slot is closed. A Copy Action is created and the status is set to **COMPLETED**. A DeleteInstance Action is created and the status is set to **SCHEDULED**. No actions are executed because the slot is closed.

The disk instance expires after 20 minutes.

The slot opens the next day. The DeleteInstance Action is executed, and the status is set to **COMPLETED**. The Copy Action status remains as **COMPLETED**.

Request priority

This field identifies the priority of the request and order of execution when the action is submitted to the DIVA Core Manager.

Medium Associated with Slot

Select the target medium to associate with the slot from the list.

Req. Number of Instances

The number of object instances that should exist on the target medium. If the actual number of instances is less than this setting, additional copies will be created. *This parameter is only applicable to Storage Slots.*

Example:

Req. Number of Instances: 2

Workflow:

One object instance already exists on the target medium.

Because there is only one instance existing, and this parameter is set to 2, another copy will be made to another disk in the array, or to another tape in the group.

Once Only

Determines whether the slot can run multiple times. Setting this to N indicates it can run multiple times, while setting this to Y indicates it will only run once.

Note: This parameter is only applicable for Storage Slots and must be set to **Y** when using Mixed Mode Watermarking.

Example:

Once Only: N

Workflow:

An object was copied to the target medium, but somebody manually deleted the copied instance. This slot will realize the object does not exist on the target medium and run again, resulting in another copy on the target medium being created.

Example:

Once Only: Y

Workflow:

An object was copied to the target medium, but somebody manually deleted the copied instance. This slot will not run again, resulting in no object instance on the target medium (*because it had been manually deleted*).

If the **Slot End Time** for deletion has been set, when the **Slot End Time** is reached, SPM will automatically mark the object instance on the target medium as being deleted because it was manually deleted before the **Slot End Time** was reached.

4. Click **OK** to complete the process. The new slot will be displayed in the **Slots** tab in DIVA Command.

Configuring Nearline Storage Slots

Starting with DIVA View 5.3, you can specify two new **Quality of Service (QOS)** parameters called **NEARLINE_ONLY** and **NEARLINE_AND_DIRECT** through the API or the Control GUI in Restore and Multiple Restore requests. The default QOS for a Restore or Multiple Restore request is **NEARLINE_AND_DIRECT**. The default QOS for all other requests remains **DIRECT_AND_CACHE**.

When the Manager receives either of the new QOS values, it will initiate a **DIRECT** restore from any available disk instance, regardless of whether the disk instance is located on a disk with a DIVA Core Datahub-Disk connection that is configured for Nearline. If no disk instance is found, the Manager will not terminate the request; instead it creates a disk instance and proceeds in the following sequence:

1. Check for **NEARLINE** disks during disk selection.
2. If no disks are available, then for QOS:

NEARLINE_ONLY

The workflow will terminate and an error is generated stating *No AVAILABLE Datahub-Disk connection is configured with Nearline storage.*

NEARLINE_AND_DIRECT

DIRECT RESTORE will be used.

3. Reserve space for permanent storage during the restore.
4. Create a permanent disk instance in memory.

If the disk instance *cannot* be created, then for QOS:

NEARLINE_ONLY

The workflow will terminate.

NEARLINE_AND_DIRECT

DIRECT RESTORE will be used.

If the disk instance *can* be created, the workflow will proceed to the next step.

5. Write the disk instance to the database upon success or failure of the Restore.
6. Save component checksums for the new disk instance.
7. Update storage capacity.
8. Update last access date of object instance, if not already updated.

If all disk instances are busy, a delayed solution will be generated.

The Manager will terminate a Restore Instance request with a QOS of **NEARLINE_ONLY**, or a QOS of **NEARLINE_AND_DIRECT**, by sending an error message to the Control GUI stating *Nearline and Nearline & Direct QOS are not supported for Restore Instance*, and sending an *Invalid Parameter* error code to the API.

Nearline storage is defined using the same technique for defining the disk use. The Nearline type is defined by specifying one of two uses under *Datahub-Disk Connections* called

STORAGE_AND_NEARLINE and **CACHE_AND_STORAGE_AND_NEARLINE**. Any disk defined with one of these uses can be used for any of these operations.

An SPM Storage Slot supports this workflow for purging disk instances created during Restore requests.

- If the disk instances are created on the same medium used in the Storage Slot, a Delete Instance action in the Storage Slot will be rescheduled.
- If the disk instance is created on a different medium, you must set the Storage Slot's **Slot Begin Time** and **Slot End Time** to 0 for the associated medium.

SPM supports purging of disk instances created by the Manager during Restore requests in the following two work flows.

1. Nearline Instances are stored on the same medium, which is also used in an SPM Storage slot.
 - In this work flow it is assumed that the medium used for Nearline Storage must also be used in a SPM Storage Slot.
 - The Storage Slot must have **Once Only** set to **N**.
 - Nearline instances are not copied until the delete instance action is completed for the Storage Slot on the medium.
 - The medium used must be watermarked.
 - The disk cleaning strategy for the medium must be based on the **Object Last Access Time**.
 - After the action is put into the **SCHEDULED** state, SPM will start processing and put it into the **POSTPONED** state until the disk reaches its High Watermark.
 - After the disk reaches its High Watermark value, all of the Delete Instance Actions in the **POSTPONED** state will be executed based on the **Disk Cleaning Strategy** configured for the medium. In this case it will be the **Object Last Access Time**.
2. A separate medium is used for Nearline Storage.
 - In this workflow a Storage Slot is configured on the medium with the **Slot Begin Time** and **Slot End Time** is set to 0.
 - The Storage Slot must have **Once Only** set to **N**.
 - Setting the **Slot Begin Time** and **Slot End Time** to 0 causes SPM to generate a Storage Slot Action for this medium. However, it will be in the **COMPLETED** state by default.
 - The medium used must be watermarked.
 - The **Disk Cleaning Strategy** for the medium must be based on **Object Last Access Time**.
 - After the action is put into the **SCHEDULED** state, SPM will start processing and put it in the **POSTPONED** state until the disk reaches its High Watermark.
 - After the disk reaches its High Watermark value, all of the Delete Instance Actions in the **POSTPONED** state will be executed based on the **Disk Cleaning Strategy** configured for the medium. In this case it will be the **Object Last Access Time**.

A medium must not be configured for only one of previously mentioned workflows. Every medium that has a disk used for **STORAGE_AND_NEARLINE** or **CACHE_AND_STORAGE_AND_NEARLINE** must be configured with any one of the mentioned workflows for SPM to purge Nearline instances.

Configuring Transcode Archived Slots

Transcode Archived Slots require configuration on the **Slots** Tab of DIVA Command and contain only a single action. This slot will take an existing clip in a DIVA Core Object, transcode it to another format, and archive the resulting clip as a new Object.

Because a Transcode Archived request creates a new object in the DIVA Core System, it requires directions as how to name the new object (Transformation Rules).

Note: Each DIVA Core Datahub defined as a Transcoder must also be defined as a **LOCAL** type Server. Linux based Datahubs only support Telestream Vantage transcoding operations.

Use the following procedure to configure a Transcode Archived Slot:

1. Open DIVA Command and navigate to the **Slots** tab under the **DIVA Configuration, Storage Plans** menu item.
2. Click the + icon in the *Slots* section of the screen.
3. When the Slot Configuration window opens begin configuring the new slot by selecting **TRANSCODE_ARCHIVED** from the Slot **Request Type** list, and then continue with the remaining configuration parameters as follows:

Storage Plan

Use the menu list to select the *Storage Plan* to be associated with this slot.

Request Type

Select the type of request for this slot (Storage, Transcode Archived, Metadata Archive, or Restore). Select **TRANSCODE_ARCHIVED** in this case.

Slot Name

Enter a name for the slot in the **Slot Name** field.

Slot Begin Time (Minutes)

This parameter identifies when the action will occur. If set to zero the action is initiated as soon as the object is archived. If set to another number, for example 10 (*minutes*), the action will execute 10 minutes after the object is archived.

Slot End Time (Minutes)

Caution: If the **Slot Begin Time** and **Slot End Time** are both set to zero, then the behavior is unknown, except for Storage Slots.

Setting this parameter to -1 indicates the slot will never end (*it is permanent*) and the Transcode Archived Action will occur regardless of whether the slot is open or closed.

Example:

Slot Begin Time (Minutes): 10

Slot End Time (Minutes): -1

Workflow:

The original object is archived onto the source medium. Ten minutes later, the slot actions begin and it is transcoded onto the target medium.

Because the **Slot End Time** is set to -1, this slot will never end. If the slot is called during a period when the slot is closed, then as soon as the slot is open the transcode will take

place. If this was set to another number (*other than -1*), the normal rules will apply as described later in the **Request Execution End Time** parameter.

Enabled

Determines whether the slot is active. Selecting **Y** indicates the slot is enabled, and **N** indicates it is disabled. When a slot is disabled its actions are not executed, however they are still created, and the status is updated. When the slot is enabled again, pending actions are executed immediately.

Request Execution Begin Time (HH:MM)

This field is the slot execution window opening time in 24 hour time. If set to 00:00 the slot opens at the beginning of each day. If set to another time, for example 08:00, it will open at that time (*in this case 8:00 am*).

Request Execution End Time (HH:MM)

This field is the slot execution window closing time in 24 hour time. If set to 24:00 the slot closes after each day. If set to another time, for example 17:00, it will close at that time (*in this case 5:00 pm*).

Setting the **Request Execution Begin Time** and **Request Execution End Time** to something other than an entire 24 hour period will allow for scheduling of different functions through SPM at different times of the day (*for example overnight jobs*). If an object is archived to the source medium outside of the designated time frame for the slot, even though the object meets the Filter and Storage Plan criteria, no actions from this particular slot will occur.

If the original object was archived to the source medium while the slot was inactive (closed) and has passed the **Slot End Time**, when the slot finally becomes active (open), the action taken (*or not taken*) is determined by the **Slot End Time** setting.

Example:

Slot Begin Time (Minutes): 10

Slot End Time (Minutes): 20

Request Execution Begin Time (HH:MM): 08:00

Request Execution End Time (HH:MM): 14:00

Workflow:

A new object is placed onto the source medium at 07:00 (*while the slot is closed*). If the slot had been open at 07:00 when the new object was created it would be transcoded to the target at 07:10. Because the slot was not open when the new object was created, and the **Slot End Time** has passed, when this slot opens at 08:00, no action will be taken on the object.

If a new object is created on the source medium at 14:15 today, then tomorrow when this slot opens, no actions will be taken on the object because the **Slot End Time** has passed.

If an object is created on the source medium at 07:59 (*before the slot opens*), at 08:09 (*10 minutes after the object existed on the source*) the object will be transcoded to the target medium because the **Slot End Time** has not yet passed.

Example:

Slot Begin Time (Minutes): 10

Slot End Time (Minutes): -1

Request Execution Begin Time (HH:MM): 08:00

Request Execution End Time (HH:MM): 14:00

Workflow:

A new object is placed onto the source medium while the slot is closed. If the slot had been open at 07:00 when the new object was created, it would have been transcoded to the target at 07:10.

Since the slot was not open when the new object was created, and the **Slot End Time** is set to never end (-1), when this slot opens at 08:00, the Transcode Action will be completed on the object because the slot never ends.

If a new object is created on the source medium at 14:15 today, then tomorrow when this slot opens, the Transcode Action will be completed on the object because the slot never ends.

Request priority

This field identifies the priority of the request and order of execution when the action is submitted to the DIVA Core Manager.

Medium Associated with Slot

Select the target medium to associate with the slot from the list.

Req. Number of Instances

The number of object instances that should exist on the target medium. If the actual number of instances is less than this setting, additional copies will be created. *This parameter is only applicable to Copy Actions in Storage Slots.*

Once Only

This parameter is only applicable for Storage Slots and must be set to **Y** when using Mixed Mode Watermarking.

4. Click **OK** to complete the process. The new slot is displayed in the **Slots** tab under the **DIVA Configuration, Storage Plans** menu item.

There is a second set of tabs at the bottom of the *Slot Configuration* screen that contains the following tabs:

- **Restore, Transcode & Metadata Archive**
- **Storage**

The Transcode Archived Slot uses the **Restore, Transcode & Metadata Archive** tab to configure additional parameters including:

- **Quality Of Service**
- **Request Options**
- **Request Comments**
- **Object Name Filter**
- **Object Source Filter**
- **Object Category Filter**
- **Cascade Delete Links**
- **Transformation Rules (for renaming)**

The object filters allow restricting the Transcode process to particular objects. You can use them if you do not want to transcode all objects belonging to a Storage Plan.

The Transformation Rules are rules associated with the object filters to transform the object name and category for Transcode Archived and Metadata Archived.

- Using the **Restore, Transcode & Metadata Archive** tab at the bottom of the Slot Configuration screen, configure the *Object Filters* and *Transformation Rules* as required:

Object Name Filter

Enter the Object Name filtering criteria you want to use for this filter. An asterisk is a wildcard character and the default entry in this field.

Object Source Filter

Enter the Object Source filtering criteria you want to use for this filter. An asterisk is a wildcard character and the default entry in this field.

Object Category Filter

Enter the Object Category filtering criteria you want to use for this filter. An asterisk is a wildcard character and the default entry in this field.

Target Name Template

Enter the name for the transcoded clip on the target medium. The caret (^) character indicates the system should use the original name.

Target Category Template

Enter the category for the transcoded clip on the target. The caret (^) character indicates the system should use the original name.

If the object matches the *Object Filter* criteria it will continue to be processed using the **Transcode_Archived** Slot. If the filter criteria are not matched then no further action is taken on the object for this slot.

Transformation Rules transform the object's name and category during the request, and the *Transformation Name* and *Transformation Category* need to be added. At least one of these two values should be changed from the default.

Using the caret (^) in the **Target Name Template**, or **Target Category Template**, or both, will cause SPM to use the original clip name, or the original clip category, or both. You can use the caret with additional naming conventions (*for example, ^_wm9 or ^_cat*).

Using only the caret with no additional characters causes the DIVA Core system to initiate an error stating that an object with that name, or category, or both, already exists. Changing just one of these parameters avoids this error and creates the new transcoded clip on the target.

- Similar to the *Transformation Rules*, the *Request Templates* parameters are located at the bottom of the *Slot Configuration* screen in the **Restore, Transcode & Metadata Archive** tab. Configure the additional parameters as required:

Object Source/Destination

This field is not accessible because the newly created object is always archived from the Datahub that performed the transcoding.

Quality Of Service

Select the appropriate Quality Of Service from the list for this request. The **Quality Of Service** parameter has seven different levels:

DEFAULT

Archiving is performed according to the default Quality Of Service (*currently direct and cache for archive operations*).

CACHE-ONLY

Use cache archive only.

DIRECT-ONLY

Use direct archive only.

CACHE&DIRECT

Cached transfers from, or to, a Server to, or from, DIVA Core are preferred, but direct transfers will occur if it is not possible to process the request in cache mode.

DIRECT&CACHE

Direct transfers from, or to, a Server to, or from, DIVA Core are preferred, but cache transfers will occur if it is not possible to process the request in direct mode.

NEARLINE-ONLY

If a Nearline disk instance exists, the data is transferred from Nearline disk to the Destination Server. Alternatively, the data is first transferred entirely to Nearline storage on disk from tape, and then transferred to the Destination Server. If no Nearline service is available, the request will be terminated.

NEARLINE&DIRECT

If Nearline transfer is not available (*for example, no Datahub with Nearline storage is available*), a direct transfer is performed instead.

Request Options

Enter the transcoding options in this field based on the transcoders defined in DIVA Command. The available options are as follows:

-tr_names

This option specifies the transcoder to use as defined in the DIVA Command *Transcoders* section.

-tr_archive_format

This option specifies the factory and format to be transcoded to for Archive Slots.

-tr_restore_format

This option specifies the factory and format to be transcoded to for Restore Slots.

Request Comments

Enter any comments in this field to be sent to the DIVA Core Manager with this action request.

Pathroot

This field is not accessible because the *File Path Root* for the archive of the transcoded object is generated internally by the Transcode Archived request.

Cascade Delete Links

This parameter determines whether to perform a Delete Action on just the original object, or on both the original and the transcoded object. If set to **Y**, when the original is deleted, the transcoded copy will also be deleted. When set to **N**, when the original is deleted, the copy remains untouched.

Cascade Restore Links

This parameter determines whether to perform a Restore Action on just the original object, or on both the original and the transcoded object. If set to **Y**, when the original is restored, the transcoded copy will also be restored. When set to **N**, when the original is restored, the copy remains untouched.

Configuring Metadata Archive Slots

You configure the Metadata Archive Slots on the **Slots** tab of DIVA Command. These slots contain only a single action. This slot will archive a metadata file after an object is archived. The metadata file's file name must be the *Object Name* with no extension, and must reside on a location (*Server and Path*) that is defined in the *Slot Configuration* window. The *Object Name* and *Object Category* used for the metadata file archive are controlled by the *Transformation Rule* entries.

Use the following procedure to configure Metadata Archive Slots:

1. Open DIVA Command, and navigate to the **Slots** tab under the **DIVA Configuration, Storage Plans** menu item.
2. Click the + icon on the top right of the *Slots* section.
3. When the *Slot Configuration* dialog box opens, configure the options as follows:

Storage Plan

Use the menu list to select the *Storage Plan* to be associated with this slot.

Request Type

Select the type of request for this slot (*Storage, Transcode Archived, Metadata Archive, or Restore*). Select **METADATA_ARCHIVE** in this case.

Slot Name

Enter a name for the slot in the **Slot Name** field.

Slot Begin Time (Minutes)

This parameter identifies when the action will occur. If set to zero the action is initiated as soon as the object is archived. If set to another number, for example 10 (*minutes*), the action will execute 10 minutes after the object is archived.

Slot End Time (Minutes)

Caution: If the **Slot Begin Time** and **Slot End Time** are both set to zero, then the behavior is unknown, except for Storage Slots.

Setting this parameter to -1 indicates that the slot will never end (*it is permanent*), and the Metadata Archive Action will occur regardless of whether the slot is open or closed.

Example:

Slot Begin Time (Minutes): 10

Slot End Time (Minutes): -1

Workflow:

The original object is archived onto the source medium.

Ten minutes later, the slot actions begin and the metadata file is archived onto the target medium.

Because the **Slot End Time** is set to -1, this slot will never end. If the slot is called during a period when the slot is closed, as soon as the slot is open the archive will take place. If this was set to another number (other than -1), the normal rules will apply as described later in the **Request Execution End Time** description.

Enabled

Determines whether the slot is active. Selecting **Y** indicates the slot is enabled, and **N** indicates it is disabled. When a slot is disabled its actions are not executed, however they are still created when a new object is archived.

Request Execution Begin Time (HH:MM)

This field is the slot execution window opening time in 24 hour time. If set to 00:00 the slot opens at the beginning of each day. If set to another time, for example 08:00, it will open at that time (*in this case 8:00 am*).

Request Execution End Time (HH:MM)

This field is the slot execution window closing time in 24 hour time. If set to 24:00 the slot closes after each day. If set to another time, for example 17:00, it will close at that time (*in this case 5:00 pm*).

Setting the **Request Execution Begin Time** and **Request Execution End Time** to something other than an entire 24 hour period will allow for scheduling of different functions through SPM at different times of the day (*for example overnight jobs*). If an object is archived to the source medium outside of the designated time frame for the slot, even though the object meets the Filter and Storage Plan criteria, actions taken on the object are determined but the setting of the **Slot End Time** parameter.

If the original object was archived to the source medium while the slot was inactive (*closed*) and has passed the **Slot End Time**, when the slot finally becomes active (*open*), the action taken (*or not taken*) is determined by the **Slot End Time** setting.

Example:

Slot Begin Time (Minutes): 10

Slot End Time (Minutes): 20

Request Execution Begin Time (HH:MM): 08:00

Request Execution End Time (HH:MM): 14:00

Workflow:

A new object is placed onto the source medium at 07:00 (*while the slot is closed*). If the slot had been open at 07:00 when the new object was created the metadata file would have been archived to the target at 07:10. Because the slot was not open when the new object was created, and the **Slot End Time** has passed, when this slot opens at 08:00, no actions will be taken on the object.

If a new object is created on the source medium at 14:15 today, then tomorrow when this slot opens, no actions will be taken on the object because the **Slot End Time** has passed.

If an object is created on the source medium at 07:59 (*before the slot opens*), at 08:09 (*10 minutes after the object existed on the source*) the object will be copied to the target medium because the **Slot End Time** has not yet passed. Then at 08:19 (*20 minutes after the object existed on the source*) the metadata file will be archived to the target medium because the **Slot End Time** has not yet passed.

Example:

Slot Begin Time (Minutes): 10

Slot End Time (Minutes): -1

Request Execution Begin Time (HH:MM): 08:00

Request Execution End Time (HH:MM): 14:00

Workflow:

A new object is placed onto the source medium at 07:00 (*while the slot is closed*). If the slot had been open at 07:00 when the new object was created, the metadata file would have been archived to the target at 07:10.

Because the slot was not open when the new object was created, and the **Slot End Time** is set to never end (-1), when this slot opens at 08:00, the Metadata Archive Action will be completed on the object because the slot never ends.

If a new object is created on the source medium at 14:15 today, then tomorrow when this slot opens, the Metadata Archive Action will be completed on the object because the slot never ends.

Request priority

This field identifies the priority of the request and order of execution when the action is submitted to the DIVA Core Manager.

Medium Associated with Slot

Select the target medium to associate with the slot from the list.

4. Similar to the *Transformation Rules*, the *Request Templates* parameters are located at the bottom of the *Slot Configuration* screen in the **Restore, Transcode & Metadata Archive** tab.
 - Object Filters allow restricting the Metadata Archive process to particular objects. You can use them if archiving metadata files for all objects belonging to a Storage Plan is not desired.
 - Transformation Rules are rules associated with the Object Filters to transform the name and category during the request.

If the object matches the *Object Filter* criteria it will continue to be processed using the Metadata_Archive request type. If the filter criteria are not matched then no further action is taken on the object for this slot.

Transformation Rules transform the object's name and category during the request, and the *Transformation Name* and *Transformation Category* must be added. At least one of these two values should be changed from the default.

Using the caret (^) in the **Target Name Template**, or **Target Category Template**, or both, will cause SPM to use the original clip name, or the original clip category, or both. You can use the caret with additional naming conventions (for example, ^_wm9 or ^_cat).

Using only the caret with no additional characters causes the DIVA Core system to initiate an error stating that an object with that name, or category, or both, already exists. Changing just one of these parameters avoids this error and creates the new transcoded clip on the target.

5. Configure the additional parameters as required:

Object Source/Destination

This field is not accessible because the newly created object is always archived from the Datahub that performed the transcoding.

Quality Of Service

Select the appropriate Quality Of Service from the list for this request. The **Quality Of Service** parameter has seven different levels:

DEFAULT

Archiving is performed according to the default Quality Of Service (*currently direct and cache for archive operations*).

CACHE-ONLY

Use cache archive only.

DIRECT-ONLY

Use direct archive only.

CACHE&DIRECT

Cached transfers from, or to, a Server to, or from, DIVA Core are preferred, but direct transfers will occur if it is not possible to process the request in cache mode.

DIRECT&CACHE

Direct transfers from, or to, a Server to, or from, DIVA Core are preferred, but cache transfers will occur if it is not possible to process the request in direct mode.

NEARLINE-ONLY

If a Nearline disk instance exists, the data is transferred from Nearline disk to the Destination Server. Alternatively, the data is first transferred entirely to Nearline storage on disk from tape, and then transferred to the Destination Server. If no Nearline service is available, the request will be terminated.

NEARLINE&DIRECT

If Nearline transfer is not available (*for example, no Datahub with Nearline storage is available*), a direct transfer is performed instead.

Request Options

This is only used if a user name and password are required for the Server, otherwise leave this blank.

Request Comments

Enter any comments in this field to be sent to the DIVA Core Manager with this action request.

Pathroot

Enter the path to the metadata files on the Server.

Object Name Filter

Enter the Object Name filtering criteria you want to use for this filter. An asterisk is a wildcard character and the default entry in this field.

Object Source Filter

Enter the Object Source filtering criteria you want to use for this filter. An asterisk is a wildcard character and the default entry in this field.

Object Category Filter

Enter the Object Category filtering criteria you want to use for this filter. An asterisk is a wildcard character and the default entry in this field.

Cascade Delete Links

This parameter determines whether to perform a Delete Action on just the original object or on both the original and the Metadata Object. If set to Y, when the original is deleted, the Metadata Object will also be deleted. When set to N, when the original is deleted, the Metadata Object remains untouched.

Cascade Restore Links

This parameter determines whether to perform a Restore Action on just the original object, or on both the original and the metadata object. If set to Y, when the original is

restored, the metadata object will also be restored. When set to **N**, when the original is restored the metadata object remains untouched.

Target Name Template

For a Metadata Archive request, this parameter serves two purposes; it notifies SPM to look for an object with this parameter value on the Server, and it notifies SPM to create a Metadata Archive file on the target using this parameter value. The caret (^) character indicates the system should use the original name.

Target Category Template

Enter the category for the transcoded clip on the target. The caret (^) character indicates the system should use the original category.

6. Click **OK** to complete the process. The new slot will be displayed in the **Slots** tab under the **DIVA Configuration, Storage Plans** menu item.

Configuring Restore Slots

You configure Restore Slots on the **Slots** tab of DIVA Command. Restore Slots only contain a single action. This slot will take an existing DIVA Core Object and restore it onto the designated Server.

Use the following procedure to configure Restore Slots:

1. Open DIVA Command, and navigate to the **Slots** tab under the **DIVA Configuration, Storage Plans** menu item.
2. Click the + icon on the top right of the *Slots* section.
3. When the *Slot Configuration* dialog box opens, configure the options as follows:

Storage Plan

Use the menu list to select the *Storage Plan* to be associated with this slot.

Request Type

Select the type of request for this slot (*Storage, Transcode Archived, Metadata Archive, or Restore*). Select **RESTORE** in this case.

Slot Name

Enter a name for the slot in the **Slot Name** field.

Slot Begin Time (Minutes)

This parameter identifies when the action will occur. If set to zero the action is initiated as soon as the object is archived. If set to another number, for example 10 (*minutes*), the action will execute 10 minutes after the object is archived.

Slot End Time (Minutes)

Caution: If the **Slot Begin Time** and **Slot End Time** are both set to zero, then the behavior is unknown, except for Storage Slots.

Setting this parameter to -1 indicates that the slot will never end (*it is permanent*), and the Restore Action will occur regardless of whether the slot is open or closed.

Example:

Slot Begin Time (Minutes): 10

Slot End Time (Minutes): -1

Workflow:

The object is found on the mediums monitored by SPM.

Ten minutes later, the slot actions begin and the object is restored to the target Server.

If the **Slot End Time** was greater than zero, and if the Restore Action has not executed before the Slot End Time is reached (because the slot remained closed after the Slot End Time was reached) then the Restore Action will never be executed. If this was set to another number (other than -1), the normal rules will apply as described later in the **Request Execution End Time** description.

Enabled

Determines whether the slot is active. Selecting **Y** indicates the slot is enabled, and **N** indicates it is disabled. When a slot is disabled its actions are not executed, however they are still created when a new object is archived.

Request Execution Begin Time (HH:MM)

This field is the slot execution window opening time in 24 hour time. If set to 00:00 the slot opens at the beginning of each day. If set to another time, for example 08:00, it will open at that time (*in this case 8:00 am*).

Request Execution End Time (HH:MM)

This field is the slot execution window closing time in 24 hour time. If set to 24:00 the slot closes after each day. If set to another time, for example 17:00, it will close at that time (*in this case 5:00 pm*).

Setting the **Request Execution Begin Time** and **Request Execution End Time** to something other than an entire 24 hour period will allow for scheduling of different functions through SPM at different times of the day (*for example overnight jobs*). If an object is archived to the source medium outside of the designated time frame for the slot, even though the object meets the Filter and Storage Plan criteria, actions taken on the object are determined but the setting of the **Slot End Time** parameter.

If the original object was archived to the medium while the slot was inactive (*closed*) and has passed the **Slot End Time**, when the slot finally becomes active (*open*), the action taken (*or not taken*) is determined by the **Slot End Time** setting.

Example:

Slot Begin Time (Minutes): 10

Slot End Time (Minutes): 20

Request Execution Begin Time (HH:MM): 08:00

Request Execution End Time (HH:MM): 14:00

Workflow:

A new object is placed onto the source medium at 07:00 (*while the slot is closed*). Because the slot was not open when the new object was created, and the **Slot End Time** has passed, (*20 minutes after the object was placed on the medium, that is 7:20*) when this slot opens at 08:00, no actions will be taken on the object.

Note: If the slot had been opened at 07:00, then when the new object was created it would have been restored to the target at 07:10.

If a new object is created on the source medium at 14:15 today, then tomorrow when this slot opens, no actions will be taken on the object because the **Slot End Time** has passed.

If an object is created on the source medium at 07:59 (*before the slot opens*), at 08:09 (*10 minutes after the object existed on the source*) the object will be restored to the Server because the **Slot End Time** has not yet passed.

Example:

Slot Begin Time (Minutes): 10

Slot End Time (Minutes): -1

Request Execution Begin Time (HH:MM): 08:00

Request Execution End Time (HH:MM): 14:00

Workflow:

A new object is placed onto the source medium at 07:00 (*while the slot is closed*). Because the slot is not open when the new object was created, and the Slot End Time is set to never end (-1), when this slot opens at 08:00, the Restore Action will be completed on the object because the slot never ends.

Note: If the slot had been open at 07:00 when the new object was created, it would have been restored to the Server at 07:10.

If a new object is created on the source medium at 14:15 today, then tomorrow when this slot opens, the Restore Action will be completed on the object because the slot never ends.

Request priority

This field identifies the priority of the request and order of execution when the action is submitted to the DIVA Core Manager.

4. Similar to the *Transformation Rules*, the *Request Templates* parameters are located at the bottom of the *Slot Configuration* screen in the **Restore, Transcode & Metadata Archive** tab.
 - Object Filters allow restricting the Metadata Archive process to particular objects. You can use them if archiving metadata files for all objects belonging to a Storage Plan is not desired.
 - Transformation Rules are rules associated with the Object Filters to transform the name and category during the request.

If the object matches the *Object Filter* criteria it will continue to be processed using the *Metadata_Archive* request type. If the filter criteria are not matched then no further action is taken on the object for this slot.

Transformation Rules transform the object's name and category during the request, and the *Transformation Name* and *Transformation Category* must be added. At least one of these two values should be changed from the default.

Using the caret (^) in the **Target Name Template**, or **Target Category Template**, or both, will cause SPM to use the original clip name, or the original clip category, or both. You can use the caret with additional naming conventions (*for example, ^_wm9 or ^_cat*).

Using only the caret with no additional characters causes the DIVA Core system to initiate an error stating that an object with that name, or category, or both, already exists. Changing just one of these parameters avoids this error and creates the new transcoded clip on the target.

5. Configure the additional parameters as required:

Object Source/Destination

This field is not accessible because the newly created object is always archived from the Datahub that performed the transcoding.

Quality Of Service

Select the appropriate Quality Of Service from the list for this request. The **Quality Of Service** parameter has seven different levels:

DEFAULT

Archiving is performed according to the default Quality Of Service (*currently direct and cache for archive operations*).

CACHE-ONLY

Use cache archive only.

DIRECT-ONLY

Use direct archive only.

CACHE&DIRECT

Cached transfers from, or to, a Server to, or from, DIVA Core are preferred, but direct transfers will occur if it is not possible to process the request in cache mode.

DIRECT&CACHE

Direct transfers from, or to, a Server to, or from, DIVA Core are preferred, but cache transfers will occur if it is not possible to process the request in direct mode.

NEARLINE-ONLY

If a Nearline disk instance exists, the data is transferred from Nearline disk to the Destination Server. Alternatively, the data is first transferred entirely to Nearline storage on disk from tape, and then transferred to the Destination Server. If no Nearline service is available, the request will be terminated.

NEARLINE&DIRECT

If Nearline transfer is not available (*for example, no Datahub with Nearline storage is available*), a direct transfer is performed instead.

Request Options

This is only used if a user name and password are required for the Server, otherwise leave this blank.

Request Comments

Enter any comments in this field to be sent to the DIVA Core Manager with this action request.

Pathroot

Enter the path to the metadata files on the Server.

Object Name Filter

Enter the Object Name filtering criteria you want to use for this filter. An asterisk is a wildcard character and the default entry in this field.

Object Source Filter

Enter the Object Source filtering criteria you want to use for this filter. An asterisk is a wildcard character and the default entry in this field.

Object Category Filter

Enter the Object Category filtering criteria you want to use for this filter. An asterisk is a wildcard character and the default entry in this field.

Cascade Delete Links

This parameter determines whether to perform a Delete Action on just the original object or on both the original and the Metadata Object. If set to Y, when the original is deleted, the Metadata Object will also be deleted. When set to N, when the original is deleted, the Metadata Object remains untouched.

Cascade Restore Links

This parameter determines whether to perform a Restore Action on just the original object, or on both the original and the metadata object. If set to Y, when the original is restored, the metadata object will also be restored. When set to N, when the original is restored the metadata object remains untouched.

Target Name Template

For a Metadata Archive request, this parameter serves two purposes; it notifies SPM to look for an object with this parameter value on the Server, and it notifies SPM to create a Metadata Archive file on the target using this parameter value. The caret (^) character indicates the system should use the original name.

Target Category Template

Enter the category for the transcoded clip on the target. The caret (^) character indicates the system should use the original category.

6. Click **OK** to complete the process. The new slot will be displayed in the **Slots** tab under the **DIVA Configuration, Storage Plans** menu item.

SPM Delete Object Behavior

Caution: This feature must be managed carefully because you can lose objects.

The DELETE_OBJECT_ONLY_LAST_INSTANCE parameter is a configuration parameter that works with the existing ALLOW_OBJECT_DELETION parameter.

ALLOW_OBJECT_DELETION Parameter

This parameter must be enabled for SPM to delete objects. You must enable or disable Delete Object for each Storage Plan separately when configuring them in DIVA Command. This configuration method provides additional security and flexibility. Delete Object is enabled only when it is enabled in both the configuration file and also the Storage Plan configuration.

Note: If this parameter is disabled, allowing it for a Storage Plan will have no effect.

Delete Object is executed only when the following conditions are satisfied:

- The ALLOW_OBJECT_DELETION parameter must be enabled.
- Delete Object must be enabled for the Storage Plan level through DIVA Command.
- All of the Storage Slots in the Storage Plan associated with the object must have a **Slot End Time**.
- Delete Object will be executed by the Storage Slot that has the highest end time in the Storage Plan.

An object can be associated with only one Storage Plan.

If multiple Storage Slots have a maximum end time in a Storage Plan, the slot with the maximum Slot ID among the slots with maximum end time will perform the delete object.

- Just enabling ALLOW_OBJECT_DELETION will not acknowledge a Storage Slot medium Watermark, and the Delete Object is executed at the end of the Storage Slot that has the highest end time in the Storage Plan.

The valid values for this parameter are true or false, and the default is false.

DELETE_OBJECT_ONLY_LAST_INSTANCE Parameter

This parameter adds additional checks and conditions to the SPM Delete Object feature.

Enabling this parameter forces SPM to delete an object at the end of a Storage Slot only if it is the last instance in the entire DIVA Core system, and that last instance exists on the Storage Slot medium with the highest **Slot End Time** among all Storage Slots of the Storage Plan. Otherwise, SPM will never execute a Delete Object at the end of the Storage Slot, it will always only execute a Delete Instance at the end of a Storage Slot. The following conditions must be satisfied for this to execute correctly:

- This parameter requires ALLOW_OBJECT_DELETION to be enabled. Only enabling DELETE_OBJECT_ONLY_LAST_INSTANCE has no effect, and the SPM Delete Object feature will not be enabled.
- The parameter DELETE_OBJECT_ONLY_LAST_INSTANCE must be enabled.
- You must have Delete Object enabled for the Storage Plan level through DIVA Command.
- All of the Storage Slots in the Storage Plan associated with the object must have a **Slot End Time**.
- Delete Object will be executed by the Storage Slot that has the highest **Slot End Time** in the Storage Plan.

An object can be associated with only one Storage Plan.

If multiple Storage Slots have a maximum end time in a Storage Plan, the slot with maximum slot ID among the slots with maximum end time will perform the Delete Object function.

- At the end of the Storage Slot, if more than two instances exist in the DIVA Core system or on the medium, only Delete Instance is executed.
- Delete Object is executed only if one instance exists on the entire DIVA Core system, and that one instance exists on the medium of the Storage Slot that has the highest **Slot End Time** among all Storage Slots of the storage plan.
- If the medium of the Storage Slot that has the highest **Slot End Time** is Watermarked, the Delete Object is postponed until the Watermark condition is satisfied.

Changing a Storage Plan

Storage Plans contain Slots that you can altered if required. You can add slots, and edit, delete, and enable or disable existing slots. These adjustments to Storage Plans must be performed carefully to ensure the results that are desired. Below is an example of adding a slot to a Storage Plan, and changing an existing slot within the same Storage Plan.

Example:

- DISK1 = Local DIVA Core Managed Disk
Storage Slot

Slot Start Time = 0

Slot End Time = -1

- NEARLINE = Local Tape Group

Storage Slot

Slot Start Time = 0

Slot End Time = -1

- OFFLINE = Local Tape Group

Storage Slot

Slot Start Time = 0

Slot End Time = -1

- DISK2 = New DIVA Core Managed Disk

This is not an initial slot.

This Storage Slot is added in Step 4 of the following workflow with a **Slot Start Time** = 0, and **Slot End Time** = -1.

The company has *Storage Plan A*, which includes three total instances; one instance on disk and two instances on tape. The following is the workflow for *Storage Plan A*:

1. Object1234 is archived to DISK1 under *Storage Plan A*.
2. *Storage Plan A* has slots for the following operations, and Object1234 is copied to both tape groups:
 - Copy to NEARLINE
 - Copy to OFFLINE
3. At some point in the future, the company changes its internal policy for content with *Storage Plan A* to three total instances; two instances on disks (DISK1 and DISK2), and one instance on the NEARLINE tape group.
4. The new slot change is added that will copy Object1234 to DISK2 but it is necessary to also delete the object instance from the NEARLINE tape group.

To delete the object instance from the NEARLINE tape group, you must change the **Slot End Time** to 0 for the NEARLINE Storage Slot (see [Disabling and Deleting Slots](#) for more information).

You must add a new Storage Slot on DISK2 with a **Slot Start Time** = 0 and **Slot End Time** = -1 (see [Adding a Slot](#) for more information).

Storage Plan A is now updated with the Nearline Slot configuration to delete the instance from the NEARLINE tape group. The **Slot Begin Time** and **Slot End Time** are both set equal to 0.

Disabling and Deleting Slots

Telestream generally recommends that slots are not deleted, but rather disabled instead. Deleting a slot does not remove the content from the DIVA Core system.

For a Storage Slot, setting the **Slot End Time** to 0 forces SPM to delete any contents created by this slot. You can delete, or disable, the Storage Slot after all the contents are removed. If you want to retain the content in a Storage Slot, but no further processing of future actions is required, you should disable the slot instead of deleting it.

Adding a Slot

You can add a slot to an existing Storage Plan. However, you must use caution to achieve the desired results.

When adding a slot to an existing Storage Plan, you must ensure that the **Slot Start Time** and **Slot End Time** are both valid (see [Configuring Storage Slots for valid parameters](#)). New slots are always immediately applicable to new objects, but for existing objects you must ensure that the **Slot Start Time** and **Slot End Time** are correct. Otherwise, the action specified in the new slot will not be executed on existing objects.

Example:

A Storage Plan with numerous objects that have been archived 48 hours before the current time. If a new Storage Slot is added, and is configured with a **Slot Start Time** = 0 and a **Slot End Time** = 24, the new slot's action will be added but not applied to existing objects because the slot has already expired for all of the existing objects:

$$((\text{Archive Object Time} + \text{Slot End Time (24 hours)}) < \text{Current Time})$$

For existing objects to be affected by the new Storage Slot, they must be immediately copied to the Storage Slot medium, but never deleted. To perform this function, you set the **Slot Start Time** to 0, and the **Slot End Time** to -1 (*infinite*). As a result, all instances will be copied to the Storage Slot medium:

$$((\text{Archive Object Time} + \text{Slot End Time (infinite)}) > \text{Current Time})$$

For non-Storage Slots (for example, *Restore Slots*), you must configure the **Slot Start Time** = 0 and the **Slot End Time** = 100. In this case, SPM will try restoring objects that have existed for less than the **Slot End Time** (100 hours); that is, the objects whose **Slot End Time** has not expired:

$$((\text{Archive Object Time} + \text{Slot End Time (100 hours)}) > \text{Current Time})$$

If SPM is not able to complete the restore of the object within 100 hours from the Archive Time, that object is never restored. If the **Slot End Time** = -1, SPM will try to restore all of the objects.

Watermark Based Disk Cleaning Management

Disk Array cleaning can be managed by a fixed slot duration, where disk instances or objects are deleted when they expire, or using a Watermark based housekeeping mechanism, where disk instances or objects are only deleted when space must be recovered. This section discusses the details of the second option.

Based on configuration, SPM may attempt to delete instances, or objects. When a Storage Slot's retention for an object is expired, and the object has no more open Storage Slots at the time, SPM will attempt to delete the object if the configuration authorizes it. Otherwise, SPM will only attempt to delete the instance located on the medium referenced in the slot.

You can explicitly specify the order in which array instances, or objects, or both, of content are removed during the DIVA Core Array Housekeeping activities. SPM includes an array monitoring component to manage array space usage called *Watermarking*.

Array housekeeping is based on a Watermark system monitored by the Disk Space Monitor component. When the array's Storage Slot retention period for an object expires, the instance, or object, or both, becomes eligible for deletion, but stays on the array until there not enough space available.

Note: Watermarking is only valid for Storage Slots.

High Watermark

DIVA Core initiates housekeeping activities and expired instances, or objects, or both are deleted according to the defined policies when this threshold is reached. If no instances or objects are eligible for deletion (for example, the retention period has not expired, or a dependency is not met), used array space can exceed the watermark. It is your responsibility to ensure that the array filling rate matches the system configuration, and to monitor how array use evolves.

Low Watermark

DIVA Core stops deleting instances and objects at the Low Watermark. Supported policies and rules for housekeeping include deleting array instances based on *Last Access Time* or *Largest Object Size*.

Mixed Mode

When an array is watermarked in *Mixed Mode*, both instances and objects marked for deletion, and objects whose slots are still open, are considered. Instances and objects in that array are deleted based on whichever of the following comes first:

Note: You must set **Once Only** to **Y** (Yes) in the associated slot's configuration for proper functionality.

- Array reached the High Watermark. Even if the object's slot has not ended, instances and objects will be deleted to bring the array to the Low Watermark level.
- Storage Slot for that object has ended. Even though the High Watermark is not reached, because the slot ended, the instance, or object, or both will be deleted.
- This does not mean the array will be cleaned to the level of Low Watermark.

For SPM to delete an object belonging to a Storage Plan, the ALLOW_OBJECT_DELETION parameter must be set to **Y** in both the SPM Configuration File and DIVA Command.

External Storage Plans

External Storage Plan functionality allows management of the DIVA Core Object Lifecycle using third party external systems. You can use the SPM Database API to develop integration of third party components with DIVA Core and SPM.

Note: In this release of SPM, **E** (*External*) should only be used by Telestream personnel.

Configuration Validation

You can validate the accuracy of the SPM configuration using DIVA Command. Use the following procedure to validate the SPM configuration:

1. Open DIVA Command.
2. Select any of the tabs across the top of the screen.
3. From the menu bar, select **Tools**, and then **Validate SPM configuration**. Alternatively you can hold **Alt+t**, and then press the **F3** function key.

DIVA Command will verify the configuration of SPM and return a dialog box with one of two results:

- DIVA Command verified the SPM configuration successfully and the dialog box indicates no errors were found.
- DIVA Command verified the SPM configuration, found errors, and dialog box displays the errors that were discovered.

For example:

ERROR: Slot Test must not be of type STORAGE, Please mention correct request type in Object Filters Configuration.

This chapter describes SPM operations, and includes the following information:

- [Managing the SPM Service through the Command Line](#)
- [Accessing SPM Information through the Control GUI](#)
 - [Filtering the SPM Actions Panel View](#)
 - [Assigning a New Storage Plan](#)
 - [Rescheduling Failed Actions](#)
 - [Marking Failed Actions Complete](#)
- [Storage Plan Manager Action Result Codes](#)
- [Storage Plan Manager Logging](#)

Managing the SPM Service through the Command Line

You can manage the SPM Service through the Windows Command-line Interface (*START, RUN, CMD*), or using the Windows Services Panel. Telestream recommends you use the command-line interface.

```
spmSERVICE.exe {command} [options]
```

The following are the commands:

install (or use -i)

This command installs SPM as a Windows Service.

uninstall (or use -u)

This command removes the SPM Windows Service.

debug (or use -d)

This command starts SPM in console mode for troubleshooting purposes.

version (or use -v)

This command displays the SPM release information, and then exits.

help (or use -h)

This command displays help information, and then exits.

The following are the options:

-conf (or use -f)

You use this option to load the settings from a specific configuration file.

For example, `spservice.exe install -conf C:\DIVA\conf\test.conf`.

Accessing SPM Information through the Control GUI

You can view SPM information for objects, and reschedule failed actions using the DIVA Core Control GUI. This section describes how to use the Control GUI to access the information and what information is available through this interface.

Start the DIVA Core Control GUI, and then follow through this section to discover where to view the SPM information required.

- You can see which Storage Plan is assigned to an object on the **Objects** screen under the **Manage** tab.

If a newly archived object does not match any filters it is assigned the default Storage Plan. The default Storage Plan is **SP_DEFAULT** and has no slots (*and therefore no actions*) associated with it.

- You can view information concerning all actions established by SPM immediately through the **SPM Actions** panel under the **Manage** tab.

The *ID* column on the screen is the automatically generated internal SPM ID.

The *Task Name* column displays the *Task Name* for the action. The **DEFAULT SPM SCHEDULER TASK** name corresponds to internal SPM generated actions. External actions will display a different *Task Name*.

The *Req. ID* column displays the DIVA Core Request ID. When an action is in the **SCHEDULED** state in SPM, the initial *Request ID* will be zero. When the action begins execution, DIVA Core receives a request and generates the DIVA Core Request ID.

The remaining columns on this screen are self-explanatory.

You can view the *Request Properties* by double-clicking on the action, or by right-clicking on the action and selecting **Request Properties** from the resulting context menu. If no Request Mapping exists for the object, the Request Properties window will not appear.

Note: If the action is getting old, the DIVA Core request history may have cycled and the Request ID may have been reused by a newer DIVA Core request. In this case, viewing the *Request Properties* will display a different request other than the one expected.

Filtering the SPM Actions Panel View

The **SPM Actions** panel enables filtering which actions you want to view. You use the menu lists and text boxes at the top of the screen to filter your view. The default asterisk displayed in the text boxes is a wildcard and signifies that no filtering restriction is being placed on the parameter where it is used (*that is, the Object name, Category, Task Name, and Slot name*).

To filter by **Scheduled Date** (*and time*), select the check box next to **enable**, and then select the **Begin** and **End** dates and times to view. If you do not select the check box next to **enable**, this filtering function will be grayed out and unusable.

Additional filtering is possible by **Action Status**, or **Action Type**, or both. Click the button next to either one (*or both*) to display a list of options, and select the desired filters, then click **Close** to continue.

After changing any of the viewing filters, you must click **Refresh** to refresh the view.

Assigning a New Storage Plan

You can change Storage Plans only for an object that is assigned the default Storage Plan (**DEFAULT_SP**). When a new Storage Plan is assigned to an object, SPM sees that object as being a new object in the system because it has a new Storage Plan assigned.

You can select a list of multiple objects by holding the **SHIFT** key and selecting the first, and then the last object in the list. All objects in between the first and last will be selected. You can also click and hold the mouse button on the first object, and then drag the mouse pointer to the last object and release the button.

To select individual objects, hold the **CTRL** key and click each specific object to highlight it, and then release the button.

Use the following procedure to assign a Storage Plan to the selected objects:

1. Open the DIVA Core Control GUI, and connect to the database.
2. Navigate to the **Manage** tab, and then click the **Objects** icon.
3. Select one or more object to assign a new Storage Plan to using one of the methods previously described.
4. Right-click the objects requiring the new Storage Plan.
5. Select **Assign Storage Plan** from the displayed context menu.
6. A new dialog box is displayed allowing selection of the Storage Plan to be assigned. Select the **Storage Plan** to assign from the list, and then click **Assign** to assign the new plan to the selected objects.

Rescheduling Failed Actions

When an action fails to execute properly and does not complete correctly, SPM will automatically reschedule the action for re-execution at some time in the future. You can also manually reschedule the action to run immediately using the following procedure:

1. Open the DIVA Core Control GUI.
2. Navigate to the **Manage** tab, and then click the **SPM Actions** icon.
3. Right-click the action that requires rescheduling (*you can select multiple actions - see the previous section for multi-selection tips*).
4. Click **Reschedule Action** from the resulting context menu. A confirmation dialog box will display.
5. On the confirmation dialog box, select **Yes** to confirm rescheduling the action to execute immediately, or select **No** to cancel the process.

Marking Failed Actions Complete

You can change the status of *SPM Failed Actions* to **COMPLETED** by right clicking the action, and then selecting **Mark Action Completed** from the context menu.

Normally, SPM will retry a completed Copy Action if the **Once Only** option is set to **N**, and a user manually (*or accidentally*) deletes the instance that SPM copied before the Storage Slot expires. Also, SPM will normally retry a completed Delete Action if a user manually (*or accidentally*) copies an instance to the Storage Slot medium after SPM deleted it.

Actions marked as complete by a user will never be retried by SPM. However, you can reschedule a user completed action by right clicking it, and the selecting **Reschedule Action** from the context menu. The **Mark Action Completed** option is only available using the *Administrator* profile.

Storage Plan Manager Action Result Codes

Result codes are displayed for every processing and completed action in the *SPM Actions* panel of the Control GUI. The *Action Result Code* is a short text string reflecting the latest available result of action execution.

The following list describes the possible result codes:

Prefix: REQ

Description: DIVA_REQUEST_STATE code from the DIVA Core API.

Details: SPM always updates the status of an action after execution based on the status of the corresponding request submitted to the Manager. SPM uses the DIVA Core GET_REQUEST_INFO API call to find the status of the request, and updates the result code for the action based on the DIVA_REQUEST_STATE code returned by the DIVA Core GET_REQUEST_INFO API call. *See the DIVA Core API documentation in the DIVA Core Documentation library for more details.*

Sample RESULT_CODE: REQ-REQUEST_STATUS where REQUEST_STATUS is one of the following:

TRANSFERRING

MIGRATING

COMPLETED

ABORTED

CANCELLED

UNKNOWN

DELETING

WAITING FOR RESOURCES

ASSIGNING POOL

PARTIALLY ABORTED

RUNNING

PENDING

Prefix: API

Description: DIVA_STATUS of the DIVA Core API.

Details: SPM uses the DIVA Core API to execute actions and submit requests to the Manager. The result code of the action is updated with the DIVA_STATUS API return code if SPM failed to submit the request. *See the DIVA Core API documentation in the DIVA Core Documentation library for more details.*

Sample RESULT_CODE: API-RETURN_CODE where RETURN_CODE is one of the following:

DIVA_OK

DIVA_ERR_UNKNOWN

DIVA_ERR_INTERNAL

DIVA_ERR_NO_ARCHIVE_SYSTEM

DIVA_ERR_BROKEN_CONNECTION

DIVA_ERR_DISCONNECTING

DIVA_ERR_ALREADY_CONNECTED

DIVA_ERR_WRONG_VERSION

DIVA_ERR_INVALID_PARAMETER
DIVA_ERR_OBJECT_DOESNT_EXIST
DIVA_ERR_SEVERAL_OBJECTS
DIVA_ERR_NO_SUCH_REQUEST
DIVA_ERR_NOT_CANCELABLE
DIVA_ERR_SYSTEM_IDLE
DIVA_ERR_WRONG_LIST_SIZE
DIVA_ERR_LIST_NOT_INITIALIZED
DIVA_ERR_OBJECT_ALREADY_EXISTS
DIVA_ERR_GROUP_DOESNT_EXIST
DIVA_ERR_SOURCE_OR_DESTINATION_DOESNT_EXIST
DIVA_WARN_NO_MORE_OBJECTS
DIVA_ERR_NOT_CONNECTED
DIVA_ERR_GROUP_ALREADY_EXISTS
DIVA_ERR_GROUP_IN_USE
DIVA_ERR_OBJECT_OFFLINE
DIVA_ERR_TIMEOUT
DIVA_ERR_LAST_INSTANCE
DIVA_ERR_PATH_DESTINATION
DIVA_ERR_INSTANCE_DOESNT_EXIST
DIVA_ERR_INSTANCE_OFFLINE
DIVA_ERR_INSTANCE_MUST_BE_ON_TAPE
DIVA_ERR_NO_INSTANCE_TAPE_EXIST
DIVA_ERR_OBJECT_IN_USE
DIVA_ERR_CANNOT_ACCEPT_MORE_REQUESTS
DIVA_ERR_TAPE_DOESNT_EXIST
DIVA_ERR_INVALID_INSTANCE_TYPE
DIVA_ERR_ACCESS_DENIED
DIVA_ERR_OBJECT_PARTIALLY_DELETED
DIVA_ERR_LICENSE_DOES_NOT_SUPPORT_THIS_FEATURE
DIVA_ERR_COMPONENT_NOT_FOUND
DIVA_ERR_OBJECT_IS_LOCKED
DIVA_ERR_OBJECT_BEING_ARCHIVED

Prefix: SPM**Description:** SPM business logic result code.**Details:** The description for each result code is included with the sample codes in the following list.

Sample RESULT_CODE:

SPM-LR_CONFIG_PREVENTS_DELETE - ALLOW_OBJECT_DELETION parameter in the spm.conf file was set to false and prevented SPM from deleting the last instance of an object.

SPM-LR_CANNOT_DELETE_LAST_INSTANCE - SPM refused to delete the last instance of an object.

SPM-LR_NO_MORE_INSTANCES_ON_SLOT - SPM refused to create more instances on a slot than it was permitted.

SPM-LR_POSTPONED_AS_WATERMARKED - SPM postponed a Delete Instance Action because it was for a Watermarked media.

SPM-LR_NO_NEED_TO_LINK_OBJECTS - The *Verify* stage of the *LINK OBJECTS* step. If the METADATA_ARCHIVE Slot was configured without **Cascade Objects** for Delete or Restore (both set to **N**), there will be no link between the objects, and this error will be produced.

SPM-LR_CANNOT_SEND_MORE_REQUESTS - the Manager Monitor does not allow sending more requests to the Manager.

SPM-LR_ACTION_SLOT_EXPIRED - An action will have this code either because the object was deleted from DIVA Core, but is still under SPM, or the slot expired after loading the SPM action into memory.

Prefix: USR

Description: User action was executed.

Details: The user manually marked the action complete.

Sample **RESULT_CODE:** USR-ACTION where ACTION can be MARKED_COMPLETE.

Storage Plan Manager Logging

The SPM Logging configuration file assists with controlling the SPM log file size and file switching. It purges old SPM logs and identifies which specific module inside of SPM to enable or disable logging for. The description of global parameters is in the following sample spm.trace.ini:

```
#####
# Global parameters
#####
@timestep = How frequently SPM must switch log files; units in minutes.
@sizelimit = How frequently SPM must switch log files after reaching the log file size limit; units in KB.
@timetolive = How much history of the SPM logs must be preserved; units in days.
@tracelevel = <Value>
Value 1 = Only error messages are logged in the SPM log files
Value 2 = Only Errors and Warnings are logged in SPM log files.
Value 3 = Errors, Warnings and Information will be logged in the SPM log files.
@tracemanagerlog = <Value>
Value 1 = enable logging for trace manager module.
Value 0 = Disable trace manager logging.
```

You enable and disable SPM module logging as follows:

- If the module is prefixed with ! then it is enabled.
- If the module is prefixed with # then it is disabled.

For example:

!SPMService

Trace is *enabled* for the component SPMService.

#DbConnectionPool

Trace is *disabled* for the component DbConnectionPool.

Frequently Asked Questions

This chapter discusses some frequently asked questions and includes the following information:

- What should be done if no SPM actions are being generated?
- What should be done if only Storage actions are being generated?
- What should be done if SPM actions are generated but are never executed (they stay in the Scheduled state)?
- What should be done if SPM actions always Fail Long?
- Why are SPM actions removed from the SPM Actions List?
- Why does the Start At time not update when an SPM action is rescheduled?
- Why are copies being recreated on the disk after a Delete Instance?
- What are the different components of SPM?
- It appears that sometimes not all components start as part of SPM. What, if anything, controls whether a given component starts, and how do I tell if the DSM Controller is started since it is now integrated with SPM?
- SPM appears to communicate only with the Oracle Database and the Manager (through DIVA Core API calls). Does SPM interact with any other processes?
- Is SPM event driven, or does it purely repeat some looped processing of slots and rules or database query results?
- Is SPM stateful across restarts?
- An archived object can only belong to a single Storage Plan. When an object is first archived, DIVA Core Manager appears to archive to the default media for the corresponding Storage Plan, or the next-best media if the default media is not available for some reason. Is this correct?
- What are the meanings of the DATARCHIVED, DATELASTUPDATE, and DATENEXTUPDATE properties for objects under SPM?
- A newly archived object appears to have its DATELASTUPDATE and DATENEXTUPDATE fields set to the same value as DATEARCHIVED automatically by DIVA Core independent of SPM. Is this correct?

What should be done if no SPM actions are being generated?

- Confirm the SPM Service is operational.

- Check the SPM configuration file in the conf/spm folder and verify that the values for DIVA_MANAGER_ADDRESS, DIVA_MANAGER_PORT, ORACLE_USER, ORACLE_PASSWORD, and ORACLE_CONNECTION parameters are set correctly.
- Confirm that slots are enabled.

What should be done if only Storage actions are being generated?

- Confirm that the non-Storage type slots are enabled and are included in the correct Storage Plan.
- Confirm that in the SPM Slot configuration on the **Restore, Transcode & Metadata Archive** tab that the **Object Name**, **Object Source**, and **Object Category** filters are set so that they do not filter out the SPM actions you are expecting.
- Check the SPM configuration file and confirm that DIVA_RESTORE_MAX_REQUESTS, DIVA_TRANSCODE_ARCHIVE_MAX_REQUESTS, or DIVA_METADATA_ARCHIVE_MAX_REQUESTS are not set to 0.

What should be done if SPM actions are generated but are never executed (they stay in the Scheduled state)?

Check the *Archive Date* of the objects for which the actions were generated and compare it to the values configured in the **Slot Begin Time** and **Slot End Time** parameters, and **Request Execution Begin Time** and **Request Execution End Time** in DIVA Command to verify if one of the following cases is true:

- If the age of the object has not met or exceeded the number of minutes specified in the **Slot Begin Time**. In this case, the actions may still be executed but only after the age of the object has met or exceeded the number of minutes specified in the **Slot Begin Time**.
- If the age of the object has met or exceeded the number of minutes specified in **Slot Begin Time** and has not exceeded the minutes specified in the **Slot End Time**, but the clock time the object has existed (*for example, 9:30 to the current time of 13:20*) has not yet fallen within the **Request Execution Begin Time** and **Request Execution End Time** range (*for example, 13:30 to 15:30*), the actions may still be executed, but only after the clock time has met or exceeded the **Request Execution Begin Time**.
- If the age of the object has exceeded the number of minutes specified in the **Slot End Time** without the SPM action being executed, then this SPM action will never execute and stay in the **SCHEDULED** state. For example, if the **Slot End Time** is 10 minutes, but the age of the object is 20 minutes, the SPM action for this object will not execute even if the clock time is within the slot **Request Execution Begin Time** and **Request Execution End Time** range because the object has expired.

This can occur by design where the object's lifetime is expected to expire before the slot **Request Execution Begin Time** is even reached. It can also occur if the Manager is frequently or constantly running more requests than specified in the DIVA_MANAGER_MONITOR_MAX_REQUESTS parameter in spm.conf. This, in turn, can cause the SPM Service to hold off submitting the SPM actions to the Manager to the point where the object eventually expires before its associated SPM action is allowed to be submitted to the Manager.

SPM appears to communicate only with the Oracle Database and the Manager (through DIVA Core API

What should be done if SPM actions always Fail Long?

Usually when an SPM action Fails Long it is due to the request submitted by SPM terminating in the Manager. Check the reason why the requests are terminating in the Manager and remedy the problem there.

Why are SPM actions removed from the SPM Actions List?

SPM actions are removed from the SPM Actions List when the objects they are associated with have been deleted from DIVA Core.

Why does the *Start At* time not update when an SPM action is rescheduled?

The *Start At* time only represents the initial date and time when the action was initially executed.

Why are copies being recreated on the disk after a Delete Instance?

Check that the *Once Only* flag in the slot configuration is set to true. If *Once Only* is set to false, then the system will continue to make copies of deleted instances.

What are the different components of SPM?

DSM (*Disk Space Monitor*) Controller

This module monitors the Watermarked array and does the cleanup when the High Watermark is reached.

SPM Controller

This module is responsible for creating, updating, and executing actions based on the configuration.

It appears that sometimes not all components start as part of SPM. What, if anything, controls whether a given component starts, and how do I tell if the DSM Controller is started since it is now integrated with SPM?

The SPM Controller is always started. The DSM Controller is started only if there is at least one Watermarked array configured.

SPM appears to communicate only with the Oracle Database and the Manager (through DIVA Core API calls). Does SPM interact with any other processes?

SPM only interacts with the Oracle Database and the Manager using the DIVA Core API. SPM may interact with the DIVA Connect instead of the Manager if configured to do so. Otherwise, SPM does not interact with any other processes.

Is SPM event driven, or does it purely repeat some looped processing of slots and rules or database query

Is SPM event driven, or does it purely repeat some looped processing of slots and rules or database query results?

Only the DSM Controller part of SPM is event driven. It waits for the Watermarked array to reach the High Watermark to trigger the cleanup of the array.

Is SPM stateful across restarts?

SPM is stateful across restarts. It saves the current state of the actions in the database. The actions that were running are recovered during the next SPM start.

An archived object can only belong to a single Storage Plan. When an object is first archived, DIVA Core Manager appears to archive to the default media for the corresponding Storage Plan, or the next-best media if the default media is not available for some reason. Is this correct?

Yes, an object can only belong to one Storage Plan. If a Storage Plan is specified in the request, that object is always assigned to that Storage Plan.

If the Storage Plan is specified and no destination media is specified in the request, the object is assigned the given Storage Plan and archived to the default media of the Storage Plan. However, if the default media is not available, the object is then archived to the first available media of the Storage Slots in the given Storage Plan in ascending order of *Slot Priority*, *Slot Window Begin Time*, and *Slot ID*. If no media is available for the given Storage Plan the request is terminated.

What are the meanings of the DATARCHIVED, DATELASTUPDATE, and DATENEXTUPDATE properties for objects under SPM?

DATEARCHIVED

This property is the date when object was archived.

DATELASTUPDATE

This property is the date of the last time actions were created or updated for this object.

DATENEXTUPDATE

This property is the date when SPM checks for any changes in the slot that will affect any actions of this object, and updates them if any changes are identified.

A newly archived object appears to have its DATELASTUPDATE and DATENEXTUPDATE fields set to the same value as DATEARCHIVED automatically by DIVA Core independent of SPM. Is this correct?

Yes, DATELASTUPDATE and DATENEXTUPDATE will change after SPM generates actions for that object.

Default Configuration Files and Parameters

This appendix describes SPM configuration parameters, and sample configuration files. The following information is included:

- [SPM Configuration Parameters](#)
 - [Storage Plan Definitions](#)
 - [Mediums Definitions](#)
 - [Object Slot Definitions](#)
 - [Filter Definitions](#)
 - [SPM Actions Definitions](#)
 - * [Object Filters](#)
 - * [Transformation Rules](#)
 - * [Request Templates](#)
- [SPM Default Configuration File \(spm.conf.ini\)](#)
- [SPM Trace Configuration File \(spm.trace.ini\)](#)

SPM Configuration Parameters

The following sections describe the default SPM parameters.

Storage Plan Definitions

Storage Plan Name

This parameter is the name given to the Storage Plan.

Allow Last Instance Deletion

- **Y** deletes the object.
- **N** only deletes the instance.
- This parameter can be overridden in the configuration file.
- The Disc Cleaning strategy is not applicable when set to **Y**.

Mediums Definitions

Medium Name

This parameter is the given medium name (*it is better if you provide the same name as DIVA Core **Group/Array Name***).

Storage Name

This parameter is the name of the Storage Manager. This value is not used and Telestream recommends keeping the default value (*DIVA*).

Group/Array Name

This parameter is the DIVA Core group or array name.

Watermarked

This parameter is only applicable to Storage slots, and only for disk arrays configured as mediums. It monitors the medium's use (*available space, used space, and so on*). Select **Y** (*applies watermarking*), **N** (*does not apply watermarking*), or **M** (*a combination of watermarking that is event dependent*) to specify whether to apply watermarking to this medium. See [Actions, Action Steps, and Action States](#), and [Watermark Based Disk Cleaning Management](#) for detailed information on watermarking.

In general Telestream recommends that slots are not deleted, but rather disabled. Deleting a slot does not remove the content from the DIVA Core system.

For Storage slots, setting the **Slot End Time** to 0 forces SPM to delete any content created by this slot, and after all of the content is removed, the Storage slot can be deleted or disabled. If you want to retain the content in a Storage slot, but no further processing of future actions is required, disabling the slot instead of deleting it is the safer way to do this.

See [Watermark Based Disk Cleaning Management](#) for details on watermarking.

Disc Cleaning Strategy

This parameter is the disc cleaning strategy to use:

- Last Access Time
- Size

Object Slot Definitions

Slot Name

This parameter is the name given to the slot.

Storage Plan

This parameter is the name given to the Storage Plan.

Id

This parameter is automatically generated by SPM and not editable.

Medium Associated With Slot

This parameter is the medium associated with the slot.

Slot Request Type (or Slot Type)

This parameter is the type of request as follows:

Storage

A Copy request is initiated at the beginning of the slot, and then a Delete request is initiated at the end of the slot.

Transcode Archived

This request is initiated at the beginning of the slot.

Metadata Archive

This request is initiated at the beginning of the slot.

Restore

This request is initiated at the beginning of the slot.

Slot Begin Time

This parameter identifies when the action will occur. If set to zero, the action is initiated as soon as the object is archived. If set to another number, for example 10 (*minutes*), the action will execute 10 minutes after the original object is archived.

Slot End Time

This parameter is the time (*in minutes*) from the object creation, and points to the slot end.

Request Execution Begin Time

This parameter is the time in HH:MM format (*00:00 to 24:00*), and points to the time of the day when execution can start.

Request Execution End Time

This parameter is the Time in HH:MM format (*00:00 to 24:00*), and points to the time of the day after which execution cannot start.

If the **Request Execution Begin Time** and **Request Execution End Time** are 00:00 and 24:00 respectively, there are no limitations on execution time. If the begin time is greater than end time, then the execution interval is taken from the begin time of the first day to the end time of the second day (*including midnight*).

Request Priority

This parameter is the priority of operations for SPM and the DIVA Core Manager.

Filter Definitions

Filter Name

This parameter is the name you want to call the filter.

Id

This parameter is automatically generated by SPM and not editable.

Medium Filter

This parameter is the name of the media to monitor.

Object Category Filter

This parameter is the object category to display. Leaving this field blank performs no filtering and all objects are displayed regardless of the category. You can use any combination except abc*def.

Object Source Filter

This parameter is the source to display. Leaving this field blank performs no filtering and all objects are displayed regardless of the source. You can use any combination except abc*def.

Object Name Filter

This parameter is the object name to display. Leaving this field blank performs no filtering and all objects are displayed regardless of the name. You can use any combination except abc*def.

Minimum Object Size

This parameter is the minimum object size. A value of zero indicates no restrictions from the **Maximum Object Size**.

Maximum Object Size

This parameter is the minimum object size. A value of zero indicates no restrictions from the **Minimum Object Size**.

Size Units

This parameter is the object size units filter (*KB, MB, GB*).

Storage Plan

This parameter is the name of the Storage Plan to filter.

SPM Actions Definitions

The following sections describe action definitions that are only used with Transcode Archived, Metadata Archive, and Restore slots.

Object Filters

Filter Name

This parameter is the name you want to call the filter.

Storage Plan

This parameter is the name of the Storage Plan to filter.

ID

This parameter is automatically generated by SPM and not editable.

Request Type

This parameter is only used with Transcode Archived, Metadata Archive, and Restore slots.

Object Category Filter

This parameter is the object category to display. Leaving this field blank indicates this parameter is not usable. You can use any combination except *abc*def*.

Object Source Filter

This parameter is the source to display. Leaving this field blank indicates this parameter is not usable. You can use any combination except *abc*def*.

Object Name Filter

This parameter is the object name to display. Leaving this field blank indicates this parameter is not usable. You can use any combination except *abc*def*.

Transformation Rules

The following rules are only used with Transcode Archived and Metadata Archive slots.

Transcode Archived Request

Target Name

This parameter is the name of the transcoded object. The ^ character results in using the original object name, and can be added to. For example, *^.txt*.

Target Category

This parameter is the category of the transcoded object. The ^ character results in using the original object category, and can be added to. For example, *^.txt*.

Metadata Archive Request**Target Name**

This parameter is the name of the transcoded object. The ^ character results in using the original object name, and can be added to. For example, ^.txt.

Target Category

This parameter is the category of the transcoded object. The ^ character results in using the original object category, and can be added to. For example, ^.txt.

Restore Request**Target Name**

Always leave this parameter set to the default ^ character.

Target Category

Always leave this parameter set to the default ^ character.

Request Templates**Request Type**

This parameter is only used with Transcode Archived, Metadata Archive, and Restore requests.

Transformation Rules

This parameter indicates to use an existing transformation rule.

Id

This parameter is automatically generated by SPM and not editable.

Object Source/Destination

For Metadata Archive this parameter is the Server to archive. For Restore this parameter is the Server to restore.

Pathroot

This parameter is the *Pathroot* to use for Metadata Archive or Restore.

Request Options

This parameter is any additional options necessary for Transcode Archived, Metadata Archive, or Restore.

Request Comments

This parameter is comments for Transcode Archived, Metadata Archive, or Restore.

QOS

This parameter is the DIVA Core Quality of Service.

Cascade Delete Links

This parameter is only used for Transcode Archived and Metadata Archive.

Cascade Restore Links

This parameter is only used for Transcode Archived and Metadata Archive.

SPM Default Configuration File (spm.conf.ini)

```
#####
#SPM4 Configuration File
#
```



```

#Front Porch Digital, Inc. (C) 2005, 2006, 2007
#All rights reserved.
#
#$Source: src/main/conf/spm.conf.ini $
#$Date: 2015/01/09 17:21:34EST $
#$Revision: 1.2 $
#$Author: Ramachandran, Prakash (PRamachandran) $
#####
# DIVA SPM service name
# This variable can be used to specify the name of the windows service. This is
# usefull when multiple SPM are running on the same server by giving
# different names for each SPM
# If this variable is used, the service name will be "DivaSpm-<SERVICE_NAME>".
# Default: If this variable is unset, the service name will be "DivaSpm".

#SERVICE_NAME=

#####
# MANAGER: Parameters for DIVA Core Manager
#####

# The ip address and port of DIVA Manager for SPM to connect to.
# Address default is "localhost". Port valid range is 1..65535. Default is 9000.

DIVA_MANAGER_ADDRESS = localhost
DIVA_MANAGER_PORT   = 9000

#####
# ORACLE: Connection parameters for the database
#####

# NB! For the following "ORACLE" parameters no defaults will be assumed!

ORACLE_USER   = diva
ORACLE_CONNECTION = lib5

# Maximum number of simultaneous DB connections. Valid range is 1..20.
# Default is 5.

ORACLE_POOL_SIZE = 5

#####
# MANAGER MONITOR: Parameters
#####

# Limit of requests (running+pending) on DIVA Manager, entire SPM service will
# try (see docs) no to surpass. Valid range is 10..500. Default is 250.

DIVA_MANAGER_MONITOR_MAX_REQUESTS = 250

# Maximum number of DIVA delete instance and delete object requests.This number is
# checked before sending new Delete Requests. This value is internally calculated
# (it's not received by Request to Manager). Therefore it's approximation and sometimes
# we can temproraly have Number of Delete requests grate than total number of request
# (until the next refresh ).
# Valid range is 1..300. Default is 300.Disable (no any limitations) is 0.

DIVA_DELETE_MAX_REQUESTS = 300

# The following parameters are used to restrict how many RESTORE, TRANSCODE and METADATA requests SPM will

```

```

# submit to manager simultaneously.
# Kindly note that all the below three parameters must be enabled or disabled together.
# For instance DIVA_RESTORE_MAX_REQUESTS is enabled and DIVA_TRANSCODE_ARCHIVE_MAX_REQUESTS
#and DIVA_METADATA_ARCHIVE_MAX_REQUESTS is disabled.
#Example:
#DIVA_RESTORE_MAX_REQUESTS = 3
#DIVA_TRANSCODE_ARCHIVE_MAX_REQUESTS = -1
#DIVA_METADATA_ARCHIVE_MAX_REQUESTS = -1
# In the above case SPM service will fail to start.
# Valid range is 0..300. Value -1 will disable this feature. Default value is -1.

```

```

DIVA_RESTORE_MAX_REQUESTS = -1
DIVA_TRANSCODE_ARCHIVE_MAX_REQUESTS = -1
DIVA_METADATA_ARCHIVE_MAX_REQUESTS = -1

```

```

# Minimum delay in seconds between two checks of number of requests (running+
# pending) on DIVA Manager. Checks are opportunistic. Valid range is 1..600.
# Default is 30.

```

```

DIVA_MANAGER_MONITOR_DELAY = 30

```

```

# Number of seconds that an action will be delay for, if the Manager Monitor
# finds Manager at >= DIVA_MANAGER_MONITOR_MAX_REQUESTS during its execution.
# Valid range is 1..3600. Default is 60.

```

```

DIVA_MANAGER_MONITOR_ACTION_DELAY = 60

```

```

#####
# SPM: Parameters for the SPM Controller
#####
# Total number of "short" failures per action. Next "short" failure will be
# translated into a "long" failure. Valid range is 1..50. Default is 5.

```

```

ACTION_SHORT_FAILURE_LIMIT = 5

```

```

# Total number of "short" failures per step. Next "short" failure will be
# translated into a "long" failure. Valid range is 1..50. Default is 2.

```

```

ACTION_STEP_SHORT_FAILURE_LIMIT = 2

```

```

# Minimum delay in seconds before next check on request status.
# Valid range is 1..60. Default is 10.
ACTION_STEP_WATCH_DELAY = 10

```

```

# Maximum size of the ACTION QUEUE. Valid range is 1..300. Default is 100.

```

```

ACTION_QUEUE_SIZE = 100

```

```

#####
# SPM: "Rest" time for working threads
#####

```

```

# NB! The "RECOVERY" and "RECOVERY LOAD" threads never rest - they stop upon
# completion of all work.

```

```

# Rest time for the "EXECUTION" thread in seconds. Valid range is 0..600. Zero
# "0" will disable the thread completely. Default is 5.

```

```

SPM_EXECUTION_THREAD_REST = 5

```

```

# Rest time for the "UPDATE" thread in seconds. Valid range is 0..600. Zero "0"
# will disable the thread completely. Default is 20.
SPM_UPDATE_THREAD_REST = 20
# Rest time for the "LOAD" thread in seconds. Valid range is 0..600. Zero "0"
# will disable the thread completely. Default is 20.

SPM_LOAD_THREAD_REST = 20

#####
# SPM: Sizes of chunks of rows it will process at a time
#####

# Number of rows SPM will process at a time in each call of the RECOVER_ACTIONS
# procedure. Valid range is 1..65535. Default is 500.

RECOVER_ACTIONS_CHUNK = 500

# Number of rows SPM will process at a time in each call of UPDATE_ACTION_LIST
# procedure. Valid range is 1..500. Default is 50.

UPDATE_ACTIONS_CHUNK = 50

# Number of rows SPM will process at a time in each call of the GET_ACTION_LIST
# procedure. Valid range is 1..100. Default is 25.

GET_ACTIONS_CHUNK = 25

# Time before next action update inside the UPDATE_ACTION_LIST procedure,
# in minutes. Valid range is 10..65535. Default is 20160 (two weeks = 60*24*7*2)

UPDATE_ACTIONS_NEXT_UPDATE = 20160

# Delay before "long" retry of a failed action inside the UPDATE_ACTION_LIST
# procedure, in minutes.
# Valid range is 10..65535. Default is 720 (one day = 60*24).

UPDATE_ACTIONS_RETRY_FAILED_DELAY = 720

#####
# SPM: Processing Options
#####

##### --> CAUTION! COMPLETE OBJECT DELETION! <-- #####

# This feature must be managed carefully, since we can lose objects. This parameter must be enabled for SPM to delete
# objects.
#
# Additionally delete object must be enabled or disabled for each storage plan separately during
# its configuration in configuration utility for additional security & flexibility.
# Delete object is enabled only when it is enabled both here and also Storage plan configuration.
# Note that, if this parameter is disabled here, allowing it for a storage plan will have no effect.

# Delete object is executed only in the following condition satisfy
#1) This parameter ALLOW_OBJECT_DELETION must be enabled
#2) Delete object must be enabled for the storage-plan level through configuration utility.
# 3) All The storage slot(s) in the storage-plan associated with the object must have an slot end time.
# 4) Delete object will be executed by the storage slot that has the highest end time in the storage plan.(Please note an
object can be associated with only one storage plan)
# If multiple storage slots have max end time in a storage-plan, the slot with max slot id among the slot with max end
time will do the delete object.

```

```
# 5) Just enabling ALLOW_OBJECT_DELETION will not acknowledge Storage slot medium water mark and Delete object is
execute at the end of storage slot that has the highest end time in the storage plan.
# Valid range is [true,false]. Default is "false".
```

```
ALLOW_OBJECT_DELETION = false
```

```
# The below parameter DELETE_OBJECT_ONLY_LAST_INSTANCE added the following additional conditions to the SPM
delete Object feature
# This parameter forces SPM to delete object at the end of a storage slot only it is the last instance in the entire DIVA Core
system and that last instance exist on the storage slot
# medium that has the highest slot end time among all storage slots of the Storage plan otherwise SPM will never do a
delete object at the end of the storage slot it will always only do delete instance
# at the end of a storage slot.
# The following condition needs to satisfied for this feature to work.
#1) This parameter requires ALLOW_OBJECT_DELETION also be enabled. Just enabling DELETE_OBJECT_ONLY_LAST_
INSTANCE will have no effect and SPM delete object feature will not be enabled.
# 2) This parameter DELETE_OBJECT_ONLY_LAST_INSTANCE must be enabled.
# 3) Delete object must be enabled for the storage-plan level through configuration utility.
# 4) All The storage slot(s) in the storage-plan associated with the object must have an slot end time.
# 5) Delete object will be executed by the storage slot that has the highest end time in the storage plan.(Please note an
object can be associated with only one storage plan)
# If multiple storage slots have max end time in a storage-plan, the slot with max slot id among the slot with max end
time will do the delete object.
# 6) At the end of the storage slot if more than 2 instances exist in the DIVA Core system or on the medium, only delete
instance is executed.
# 7) Delete object is executed only if one instance exist on the entire DIVA Core system and that one instance exist on the
medium of the storage slot that has the
# Highest slot end time among all storage slots of the storage plan.
# 8) If the medium of storage slot that has the highest end time is water marked the delete object is postponed until
watermark condition is satisfied.
```

```
DELETE_OBJECT_ONLY_LAST_INSTANCE = false
```

```
# Defines wether SPM will use original or transformed object name as "target"
# object name in METADATA_ARCHIVE step (Default is "true"):
# - true: use transformed object name
# - false: use original object name
```

```
METADATA_ARCHIVE_TRANSFORMED_OBJECT_NAME = true
```

```
#####
# DSM: Processing Options
#####
```

```
# Priority of the requests produced by DELETE INSTANCE (W) actions.
# Valid range is 1..100. Default is 15.
```

```
DSM_DIW_REQUEST_PRIORITY = 15
```

```
#####
# DSM: "Rest" time for working threads
#####
```

```
# Rest time for the "SPACE_MONITOR" thread in seconds. Valid range is 0..600.
# Zero "0" will disable the thread completely. Default is 10.
```

```
DSM_SPACE_MONITOR_THREAD_REST = 10
```

```
#####
# DSM: Sizes of chunks of rows it will process at a time
```

```
#####

# Number of Actions DSM will process at a given time.
# procedure. Valid range is 1..65535. Default is 50.

DSM_ACTIVATE_ACTIONS_CHUNK = 50

#####
# DSM: Disk Arrays to be monitored
#####

# Description of disk arrays. For each array, an ARRAY<i> parameter has to be
# created, with <i> indicating the array number. The first array number is 1.
# <i> has to be increased always by one.
#
# The information on array is the following:
#
# "array name";"watermark low-level percent";"watermark high-level percent"
#   [[:mounted disk path"] ...]
#
# where:
# "array name"           - name of the disk array, as it named in
#                        DIVA (It is not the SPM "medium" name!)
# "watermark low-level percent" - number from 0 to 100 - lower disk space
#                        usage percent: DSM will try to reach this
#                        percent when cleaning
# "watermark high-level percent" - number from 0 to 100 - higher disk space
#                        usage percent: DSM will start cleaning
#                        process when disk space usage is higher
#                        than this level
# [[:mounted disk path"]... - mount points of array disks. None, one or
#                        many, separated by ";". No spaces allowed.
#                        If one or many, DSM will access arrays via
#                        filesystem ("old") interface.
#                        If none, DSM will access arrays via DIVA
#                        API ("new") interface (recommended).
#
# Windows specific: If the monitored disk is a password protected network
# share, the following syntax is allowed as a mount point:
# cifs://user:pwd@\\nas\share

# When SPM service is configured with CIFS disk, The login of the SPM service must be changed from the
# default "Local System" to a valid Windows User.

#Following are the steps to change the spm service login.

# Step 1: Start -> run
# Step 2: Type services.msc in the rum prompt and press enter.
# Step 3: This should open the Windows service Control Manager
# Step 4: Select the SPM service to which you want to change the login.
# Step 5: Right click on the SPM service and select properties.
# Step 6: Select the Log on tab in the properties window of the SPM service.
# Step 7: Select the radio button next to "This account".
# Step 8: Enter a valid windows user and password
# Step 9: Click apply or ok button to commit the changes.

#ARRAY1 = FastDisk;75;90;/home/diva;/usr/bin
#ARRAY2 = SlowDisk;60;75;/tmp
#ARRAY3 = SlowDisk2;60;99
#ARRAY4 = FullDisk;50;80
```

```
#####
# SPM/DSM: Additional parameters
#####

# Level of tracing. Valid range is 1..2. Default is 2.
# "1" - will trace "entry" and "exit" points in all important functions.
#   WARNING! Will generate big volume of trace! Must be used for 'debug'
#   and 'validation' purposes only!
# "2" - will produce normal, 'production' trace.
#
TRACE_LEVEL = 2
```

SPM Trace Configuration File (*spm.trace.ini*)

```
#####
# SPM Trace Configuration File
#
# Front Porch Digital, Inc. (C) 2005, 2006, 2007
# All rights reserved.
#
# $Source: spm.trace.ini $
# $Date: 2007/12/13 15:43:35EST $
# $Revision: 1.8 $
# $Author: Ramachandran, Prakash (PRamachandran) $
#####
# uncomment the following lines to trace
#####

#####
# Global parameters
#####
@timestep=60
@sizelimit=200
@timetolive=10
@tracelevel=3
@tracemanagerlog=0

#####
# Daemon and Managers
#####

!SPMService

!Config

!DBManager
!CommManager
!FSManager
!ManagerMonitor
!TraceWrapper
?
#####
# DivaOracle Interface
#####

!Oracle
#DbConnectionPool
#DbConnection
```

```
#####  
# SPM Controller  
#####  
  
!RecoveryThread  
!RecoveryLoadThread  
!LoadThread  
!UpdateThread  
!ExecutionThread  
  
!ActionQueue  
  
#####  
# DSM Controller  
#####  
  
!SpaceMonitorThread  
  
!ArrayContainer  
  
#####  
# Action Processing Level  
#####  
  
!RestoreAction  
!MetaDataArchiveAction  
!TranscodeArchiveAction  
!ArchiveRequestAction  
!DeleteObjectAction  
!DeleteInstanceAction  
!CopyAction  
!RequestAction  
!Action  
  
!ActionRecord  
  
#####  
# Action Step Processing Level  
#####  
  
!RESTORE_STEP  
!ARCHIVE_STEP  
!TRANSCODE_ARCHIVE_STEP  
!LINK_OBJECTS_STEP  
!DELETE_OBJECT_STEP  
!DELETE_INSTANCE_W2_STEP  
!DELETE_INSTANCE_W1_STEP  
!DELETE_INSTANCE_STEP  
!COPY_STEP  
  
!RequestActionStep  
!ActionStep  
  
#####  
# Method Tracer  
#####  
  
#MethodTracer
```

Glossary

Actions

An action is associated with a slot and executed during the slot's open period.

AXF Format

The AXF (*Archive Exchange Format*) is based on a file and storage media encapsulation approach which abstracts the underlying file system, operating system, and storage technology making the format truly open and non-proprietary. AXF helps ensure long term accessibility to valued assets, and keeps up with evolving storage technologies.

DSM (*Disk Space Monitor*)

A module in SPM that assists in array cleanup when the object level reaches the High Watermark.

Filter

Determines what objects are affected by what Storage Plan.

Legacy Format

DIVA Core proprietary storage format used in DIVA Core releases 1.0 through 6.5.1.

Medium

Storage media accessible to SPM (*Disk Arrays and Tape Groups*).

Slot

Contains the action to be applied when the associated Storage Plan is executed.

Step

The current state of progression of an action or process.

Storage Plan

Actions to execute when new content arrives.