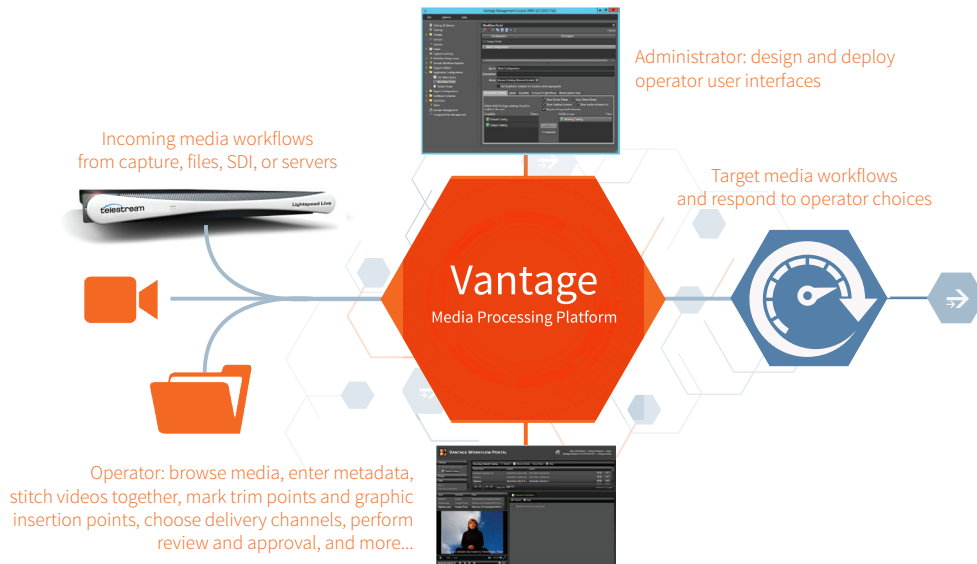


# Vantage Workflow Portal

Product Sheet



## Deploy Operator User Interfaces in Minutes

with Vantage Workflow Portal

### Telestream Vantage® Workflow Portal

allows media workflow administrators to quickly design and deploy user interfaces for operator metadata entry, content browsing, stitching, social media publishing, digital ad insertion & conditioning, and job submission. Administrators design the task that the operator will perform, and design the back-end process that will fulfill the operator input. Operators can then use the Vantage Workflow Portal client application to access their tasks and submit jobs.

Today's video operations frequently require some form of operator interaction as videos are processed through a workflow. Common operator tasks may include metadata entry, review and approval, or video stitching.

However, designing and deploying operator user interfaces – even for simple tasks – can be costly and time-consuming. In today's dynamic video environments, administrators need to be able to satisfy their workflow needs in minutes, not months.

**Telestream Vantage® Workflow Portal** allows media workflow administrators to quickly design and deploy user interfaces for operator metadata entry, content browsing, stitching, social media publishing, digital ad insertion & conditioning, and job submission. Administrators design the task that the operator will perform, and design the back-end process that will fulfill the operator input. Operators can then use the Vantage Workflow Portal client application to access their tasks and submit jobs.

### Simplify your Operator Environment

Vantage Workflow Portal eliminates the need for complicated edit systems, XML file editors, or web engineering to enable simple operator tasks.



Within a Vantage Workflow Portal deployment, administrators can:

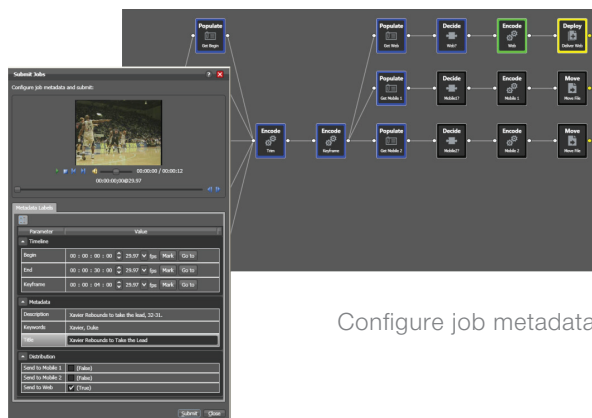
- Choose which videos in the workflow the operator can see
- Design the operator task
- Automate the process that fulfills the operator's input

### Powerful, Data-Driven Process Design

At the heart of Vantage Workflow Portal is the Vantage workflow engine, which allows administrators to design and automate the media workflow that responds to operator input.

Vantage workflows can include decision-making rules which automatically respond to incoming metadata. For example, if an operator selects checkboxes indicating the choice of media distribution channel, Vantage can respond to those checkboxes (as designed by the administrator), triggering the appropriate actions as necessary. A visual job history also shows the administrator which choices were made in each job.

Vantage also allows metadata fields to be fed directly into processing steps. For example, an operator might specify a timecode value used as a trim point; alternatively he/she might specify the location of a QuickTime file to be used as a bumper. The administrator designs the operator metadata label, and then designs how the fields in that label map into the Vantage workflow – directly into encoding parameters, web service calls, or any of the thousands of fields in Vantage that allow data binding. This allows the administrator a great deal of power in both workflow and operator task design, with the two working hand-in-hand to process media efficiently.



Configure job metadata

### Example Applications

Some example operator tasks that can be designed and deployed by administrators include:

*Highlight extraction from archive files:* The operator marks the in and out timecodes on the timeline and chooses the timecode for a thumbnail. Vantage then trims and transcodes using Vantage Transcode Pro.

*Promo Preparation:* The operator marks the voiceover and graphics entry points on the timeline. Vantage then automatically repurposes the promo for multiple markets, days, and languages based upon this simple input using Vantage Post Producer.

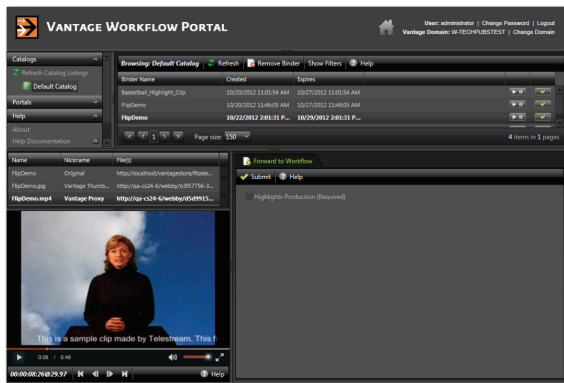
*Review and Approval:* The operator reviews a proxy of the clip and either marks the clip as accepted or rejected.

*Prepare source media and automate Digital Ad Insertion (DAI):* The operator can use a portal for preparing media in a workflow to handle Canoe/BlackArrow-compliant dynamic ad insertion (DAI).

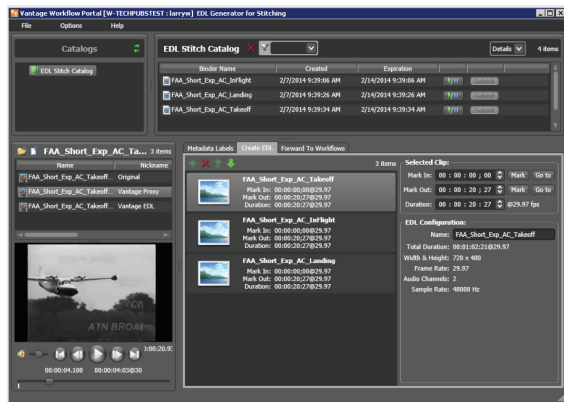
*Select media files for an output workflow to Social Media:* The operator selects media files from a catalog, and submits them to a Social Media output "receive" workflow. The output workflow posts the media and metadata to a Vantage Output Workflow for automatic posting to Social Media.

### Customizable Operator Experience

Administrators can design their own metadata schemes, including how parameters are categorized and displayed to the operator. For example, an administrator might have three checkboxes (one for each distribution channel), a string, a drop-down list of ratings, and two timecodes indicating the start and end of trim points. The administrator also builds a workflow around the metadata label, enabling the operator to drive downstream processing through simple data entry.



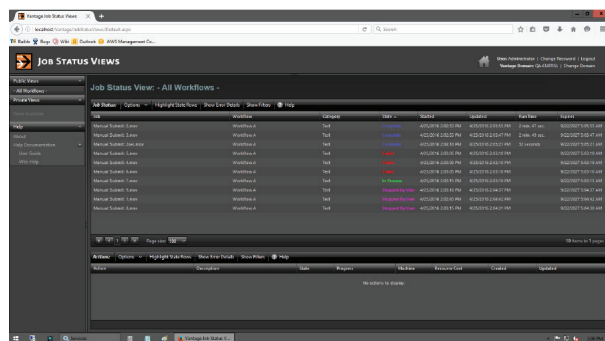
Web-based Workflow Portal



Windows Client Workflow Portal

### Watch Media Processing and Delivery

Track media processing and delivery in Vantage's unique Job Status view, which gives a visual representation of each workflow. Failed deliveries can be restarted without requiring that the job be completely restarted. Administrators can view global status in a dashboard view, seeing all failures and active jobs at a glance.



### Enhance your Workflow

Add Vantage Analysis to incorporate quality control steps at any point in the workflow, testing for both source and output video quality, and allowing operators to review errors.

Add Vantage Transcode Pro to allow the creation of virtually any file format, including edit, broadcast, cable, mobile and web video file formats.

Add VOD/DAI Portal—included in VOD Producer DAI, for producing VOD assets, with optional provisioning for dynamic ad insertion.

Add Post Producer to automate post-production content editing and assembly via a template driven workflow.

Add Tempo operator-driven re-timing of media assets—intelligently decreasing or increasing the running time of shows and segments.

Add VOD | DAI Portal to prepare source media and automate CableLabs-compliant stream-conditioned media generation, Canoe/BlackArrow-compliant dynamic ad insertion (DAI), and Nielsen audio watermarking.

### Scalable, enterprise-class software

Vantage Workflow Portal runs on Windows 10, Windows 8, 7, Server 2012 R1 and R2, and Server 2016. Actual processing of media and metadata is performed on one or multiple load-balanced servers providing high-volume processing and throughput. Vantage Workflow Portal communicates with these servers through the Vantage database. Vantage Workflow Portal clients are also available via web-browser access. This flexibility allows operators to perform their tasks easily and quickly, while “behind the scenes” processing can scale with full redundancy, 24/7 reliability and auto-failover. It also allows hundreds of Portal applications to submit jobs through the database, providing a truly scalable operating environment.

### Best in class customer support

You can rest assured that our highly-skilled technical team will be available to provide the quick and comprehensive support and guidance you need to fully leverage the power of your Telestream product.

