

How To Identify your PRISM Model

Each model can be identified via the web interface or front view / rear panel.

“It’s necessary to know a PRISM model to upgrade with the correct software. There are two versions of PRISM software available:

- Earlier models (MPI, MPX, MPI2-10, and MPX2-10) with regular BNCs and 10G interface for the Mixed Media Card support versions below 2.5.1
- Recent models (MPI2-25, MPX2-25, MPS, MPD, and later) with HD-BNCs and SFP and QSFP cages for 25GE support versions above 3.0.x

Installing the wrong software means your PRISM must be initialized to allow installing the correct software version.

The easiest way to identify the model of your PRISM is by using the web Interface if your device is connected to the network simply enter the IP address within a web browser and the following page will be displayed. Select License Portal to enter the sub menu.

The License Portal menu will show HID (Host Identifier), Serial Number, Model and Current Licenses installed.

The PRISM Model and Current Licenses will indicate the type of device so that the appropriate version of firmware can be installed.

telestream | PRISM Web Interface

- License Portal
- API Help Page
- NoVNC Access
- Preset Download and Upload
- SNMP
- SFP Status
- Alarm Status
- IP Flow Table Data
- PIT Histogram Data
- Ethernet Stats
- NMOS API

telestream | LICENSE PORTAL

Note: Units with 25GE upgrade kit should have 25GE license (e.g. MP-25GE-UP, MP2-25GE) under “current license” section. However, shipped units with MMC 25GE installed (e.g. MPI2-25, MPX2-25 and MPS/MPD) may or may not have 25GE license shown (e.g. MP2-25GE, MPSPD-25GE)

ATTRIBUTE	VALUE
HID:	XXXXXXXXXXXXXXXXXXXX
SERIAL:	XXXXXXXXXXXX
MODEL:	MPI2-25

CURRENT LICENSES

3RU Half Rack & Full Rack Models

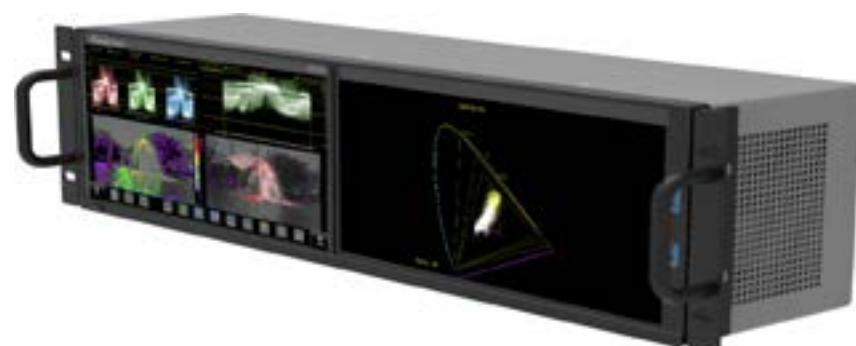
MPS Series



MPI Series



MPD Series



1RU Full Rack Models



MPX Series

25G MMC

10G MMC

How To Identify your PRISM Model

The MPS 200/300 and the MPD 200/300 models have support for 25GE and these models require firmware version 3.0.x and above only.

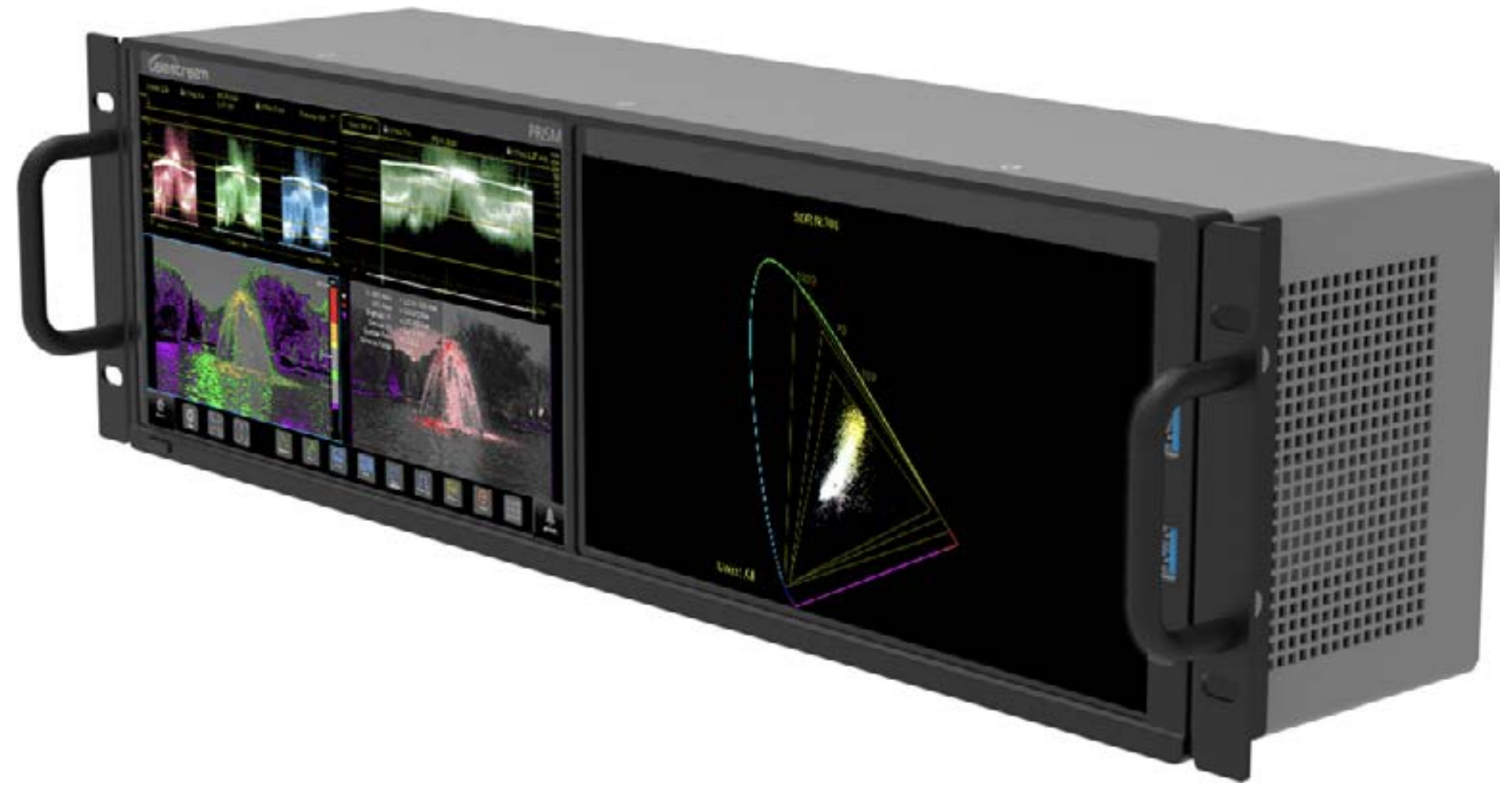
MPS Series



The MPS is a 3RU half rack instrument with shorter depth (the instrument is taller than it is deep). This is a recent PRISM model.



MPD Series



The MPD is a 3RU full rack width instrument with a dual screen and shorter depth (the instrument is taller than it is deep). This is a recent PRISM model.



Front View

Rear Panel

How To Identify your PRISM Model

Each model can be identified via the web interface or front view / rear panel.

PRISM 25GE Models

MPS, MPD, MPI2-25, MPX2-25 and earlier models (MPI2-10, MPX2-10, MPI and MPX) with 25GE Upgrade

MPI2-25

Front View



An MPI is a 3RU half rack instrument that is longer than it is tall. It could be MPI, MPI2-10, or MPI2-25.

MPX2-25

Front View



An MPX is a 1RU instrument. It could be MPX, MPX2-10, or MPX2-5.

Please check rear panel or confirm via web interface to confirm 25GE Interface is installed

How To Identify your PRISM Model

Each model can be identified via the web interface or front view / rear panel.

PRISM 25GE Models

MPS, MPD, MPI2-25, MPX2-25 and earlier models (MPI2-10, MPX2-10, MPI and MPX) with 25GE Upgrade

On the MPI and MPX series the 25G Mixed Media Card (MMC) can be identified by HD-BNC used for SDI inputs and outputs along with multiple SFP and QSFP cages.

MPI2-25 Rear Panel (MMC)



MPX2-25 Rear Panel



How To Identify your PRISM Model

Each model can be identified by front view / rear panel or via the web interface.

PRISM 25GE Models

MPS, MPD, MPI2-25, MPX2-25 and earlier models (MPI2-10, MPX2-10, MPI and MPX) with 25GE Upgrade

MPI2-25

Rear View

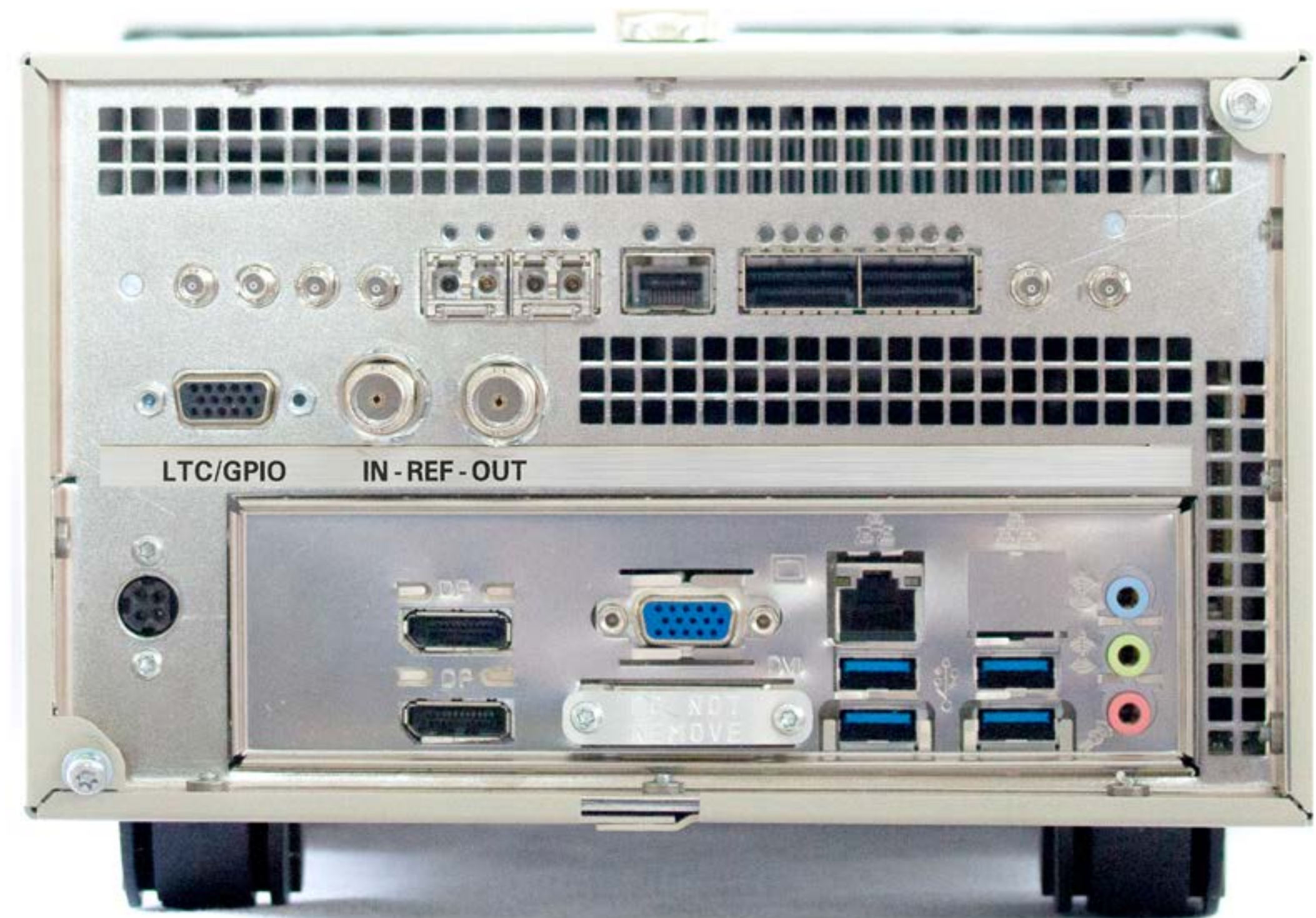
Note: HD-BNCs installed for all SDI and analog I/O



MPI with 25GE Upgrade

Rear View

Note: HD-BNCs installed for all SDI Inputs and Outputs
PC has Do Not Remove Plate for DVI connection



How To Identify your PRISM Model

Each model can be identified by front view / rear panel or via the web interface.

PRISM 10GE Models

MPI2-10, MPX2-10, MPI and MPX

On the MPI and MPX series the 10G Mixed Media Card (MMC) can be identified by standard BNC used for SDI inputs and outputs along with multiple SFP+ cages for SDI outputs and 10GE IP Media ports.

MPI 10G Rear Panel (MMC)



MPX2 10G Rear Panel (MMC)



How To Identify your PRISM Model

Each model can be identified by front view / rear panel or via the web interface.

PRISM 10GE Models

MPI2-10, MPX2-10, MPI and MPX

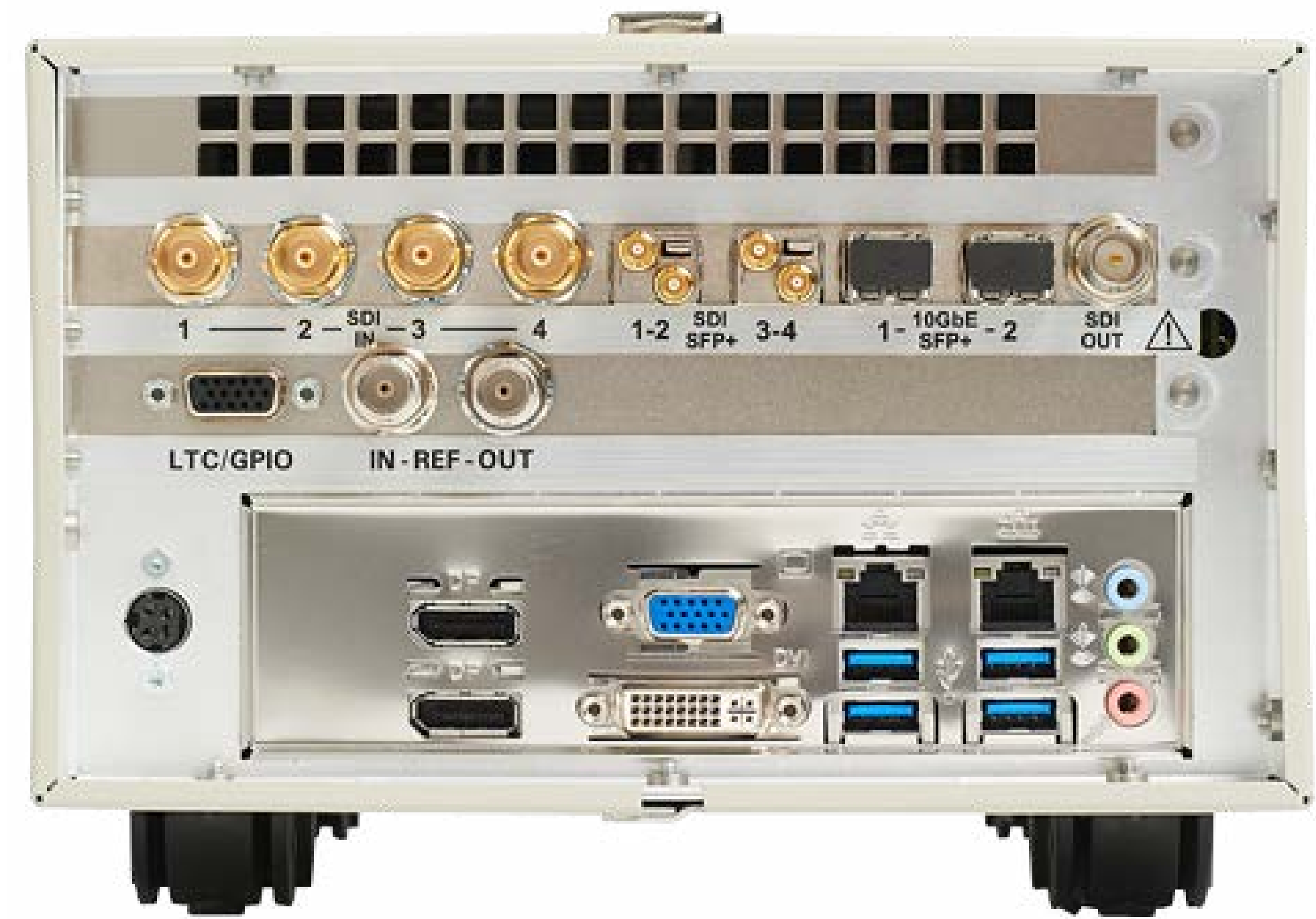
MPI2 10GE

Rear View



MPI 10GE

Rear View



On the MPI series the 10G Mixed Media Card (MMC) can be identified by standard BNC used for SDI inputs and outputs along with multiple SFP+ cages for SDI outputs and 10GE IP Media ports. The reference BNCs are different between MPI and MPI2 models.